

**STANLEY**

Engineered Fastening

# Socket Screw Catalog

Effective May 2013



Made in  
the U.S.A.





International  
Automotive  
Task Force

**The Certification Body of TÜV SÜD Management Service GmbH**  
certifies that



**Decorah LLC**  
**1302 Kerr Drive, Decorah 52101, USA**

has established and applies a Quality Management System for

**Manufacture of Threaded Cold Formed Fasteners and Metal Components**  
(without product design as per Chapter 7.3)

An audit was performed, Report No. 70772408  
Proof has been furnished that the requirements according to

**ISO/TS 16949:2009**  
**Third Edition 2009-06-15**

are fulfilled. The certificate is valid from **2011-02-10** until **2014-02-09**

Certificate Registration No.: **12 111 40159 TMS**

IATF Certificate No.: **0117070**

Part of the certificate is an appendix.

Munich, 2011-02-11

## **Superior Socket Screw Products**

Infastech is committed to offering a broad range of socket screw standard products made in the USA.

Infastech takes pride in designing, producing and delivering superior products – an attitude you would expect from the industry’s leading innovator. That pride, combined with the latest fastener technology and engineering expertise, makes Infastech one of the most reliable sources of Socket Screw products in the industry today.

- Inch and metric sizes
- Hex and TORX PLUS® Drive available
- Heat-treated alloy steel
- Meet ANSI and ASTM standards
- Cold formed product
  - Provides uninterrupted grain flow for increased fatigue strength
  - Causes material to work-harden for improved yield and ultimate tensile strength
- Roll formed threads
  - Stronger threads
  - Efficient and economical fastener production
  - Increased joint and product integrity

A wide variety of these high strength fasteners are in-stock, ready to meet your fastening needs. Single source supply can provide lower costs and improve quality.

Also, we can supply you with innovative socket screw specials or socket screw products for high-temperature or corrosive environments. Any products not shown in this handbook may be considered specials. Please contact the application engineers at Decorah Operations at 800-648-0642 for design assistance or further information.



## **Sales Service Team**

Each customer is assigned to a sales service team. Team members are up-to-date on customer activity and can provide quick and accurate responses to inquiries regarding order status, shipping schedules, quotes and more.

## **Distributors Located Around the World**

The Camcar socket screw product line is readily available through our network of distributors. To find a distributor near you, please contact us at 800-648-0642.



## **Commitment to Quality**

All Camcar socket screws are made from carefully selected and analyzed raw material, and critically inspected during the manufacturing processes.

- Utilize both Statistical Process Control and Quality at the Source methods
- Each manufacturing lot is assigned an identification number to give you complete traceability of quality in the finished product
- Many Camcar socket screw products are marked with the “Camcar” name for further assurances of the manufacturing source
- Fastener testing facility
- Integrated QA system
- Applications testing
- ISO/TS 16949:2009

## Ordering Information

For the purposes of electronic data processing, stock numbers are assigned to all items in the Camcar® socket screw product line. These numbers are shown in each price list in this catalog. Infastech maintains a minimum order of \$250.

For price quotations on either stocked items or specials, contact the Decorah Operations Customer Service Department. Lead times from these quotations can be verified at the time of the order. All quotes are subject to review of the complete and clear print.

## Packaged Camcar Socket Screws

As part of our ongoing efforts to improve our socket screw product line, we offer bar coded, safety-sealed packages. This not only ensures the package has not been tampered with, but also provides needed product information in an easy to read format. The information on the label includes lot number for traceability, part description, item number and a bar code for easier receiving.

## Stock numbers

For the purposes of electronic data-processing (EDP), Infastech has assigned stock numbers to all the items in this price list. For inch sizes, hex recess EDP numbers begin with a "1"; TORX PLUS® recess EDP stock numbers begin with a "3".

The NIDA-SIDA manufacturer's code number assigned to Infastech is 697264.

Socket screw products described in this catalog are manufactured from the highest quality alloy and stainless steels in strict conformance with standards and dimensions as set forth in ANSI B 18.3 - 1986; ANSI B 18.8.2 - 1978; MS16555 - 1985; and ANSI B 2.2 - 1968. Camcar socket products meet the respective ASTM Standard Specifications required in ANSI B18.3.

All products in this catalog are DFAR compliant.

## Special products

Products not listed in this schedule are special and will be priced upon request. Blueprints must accompany your request for quotation.

## Special materials

Products manufactured from metals other than indicated in this price schedule are specials and priced on request.

## Product weights

Weight of products listed in this schedule are approximate pounds per box.

## Returned goods

No products accepted for return without written authorization.

## Price quotations

Quotations valid for 30 days from date of issue.

## Plating

Products which are not plated by Infastech are not guaranteed and are not subject to return. Infastech will only plate those thread designations (i.e. 2A) which provide for plating allowance.

## Minimum order charge

Orders will not be accepted for less than \$250.00.

Infastech shall not be responsible or liable for misapplication or misuse of this product. All warranties are void if the product is plated or modified in any manner not under the control of Infastech.



Engineered Fastening

## Decorah Operations

1304 Kerr Drive • Decorah, IA 52101-2494

**voice:** 563.382.4216

**fax:** 563.387.3326

[www.infastech.com](http://www.infastech.com)

**Drive System Availability**

Infastech is committed to offering the marketplace the latest in fastening solutions. As such, many of our most popular socket screw products are available with both the TORX PLUS® Drive System and hex drive system.

**Drive System Selection**

There are several issues impacting proper socket screw drive system selection which must be reviewed prior to specification. Among the questions requiring review are:

- Does the drive system's torque capabilities meet the requirements of my application?
- Will the drive system withstand the high torque levels used in fastening socket screws?
- Is the required tooling readily available?
- Will I need separate tooling for inch and metric screws?
- Will the drive system enhance my overall operations?

In order to answer these questions, it is important to compare the available drive systems.

**Introduction to the TORX PLUS Drive System**

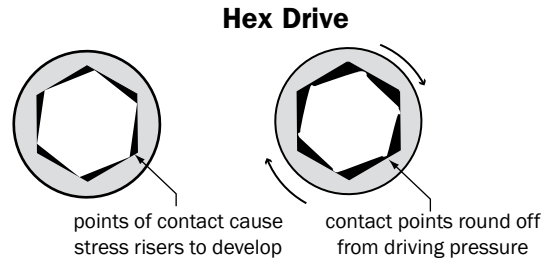
Developed as an improvement of the original TORX® Drive System, the TORX PLUS Drive consistently outperforms hex and other commonly-used drive systems. Used in virtually every industrialized nation in a multitude of industries, the TORX PLUS Drive System can enhance product reliability, increase productivity, and reduce total assembly costs.

The TORX PLUS Drive System offers a 100% improvement in driver bit fatigue life and a 25% average improvement in driver bit torsional strength. In addition, its unique design provides optimum torque transfer and eliminates the need for excessive end load pressure while driving the fastener. The TORX PLUS configuration also virtually eliminates tool camout and slippage that can damage the head of the fastener and cause reduced tool life.



**TORX PLUS Drive System vs. Hex Drive**

The hex drive has weaknesses inherent in its design which can cause problems during assembly. The engagement of the hex drive tool to the recess produces highly concentrated stress at the six corners of the drive tool (see below).



This stress at the thin cross-sectional areas of the fastener crushes the corners of the hex tool. This reduces the amount of wrenching engagement, causing reamed socket recesses and/or damaged socket tooling. This type of failure with the hex drive system is so common, it is often accepted as normal practice.

The TORX PLUS Drive System features deep engaging lobes with broad contact surfaces that spread out driving forces, preventing stress risers from forming. This minimizes damage to the drive tool and fastener, resulting in longer tool life. Customers have reported driving 2 to 10 times more fasteners per drive tool after switching to the TORX PLUS Drive.

**TORX PLUS Drive Tooling Availability**

TORX PLUS Drive tools are readily available throughout the world from licensed manufacturers and authorized distributors. Your existing tooling suppliers often also carry TORX PLUS Drive tools, in many standard styles and sizes to meet your installation requirements. Infastech also stocks many standard TORX PLUS Drive tools; see page 30 of this catalog for more information.

For service in the field, TORX PLUS Drive fasteners can be removed and reinstalled using commonly available TORX PLUS Drive or TORX Drive tooling. However, in order to fully realize the benefits of the TORX PLUS Drive, including extended bit life, TORX PLUS Drive tools should be used.



Made in the U.S.A.



General Information .....	4
Ordering Information .....	5
Drive System Selection .....	6
<b>Products</b>	<b>Price List    Technical Data*</b>
<b>Inch Sizes</b>	
Socket Head Cap Screws, 1960 Series .....	8 .....31
Socket Head Shoulder Screws .....	11 .....34
18-8 Stainless Steel Socket Head Shoulder Screws .....	13 .....34
<b>NEW!</b> 18-8 Stainless Steel Socket Head Shoulder Screws <b>With Locking Nylon Patch</b> .....	15
Socket Button Head Cap Screws .....	16 .....35
Flanged Button Head Cap Screws.....	17
Socket Low Head Cap Screws .....	18 .....36
Socket Flat Countersunk Head Cap Screws .....	19 .....37
Socket Set Screws – Cup Point .....	21 .....38
Socket Set Screws – Flat Point .....	23 .....38
Socket Set Screws – Knurled Cup Point .....	24 .....38
Precision Hardened Ground Machine Dowel Pins .....	25 .....39
<b>Metric Sizes</b>	
Socket Head Cap Screws.....	26 .....40
<b>NEW!</b> Socket Head Shoulder Screws .....	27
Socket Button Head Cap Screws .....	28 .....41
Socket Flat Countersunk Head Cap Screws .....	29 .....42
<b>Drive Tools</b>	
TORX PLUS® Drive System .....	30
TORX® Drive System .....	30
Warranty.....	43

**Note:** Specials Manufactured Upon Request

\* For complete technical information, consult the Camcar Technical Manual, available from your customer service representative at Decorah Operations.

# Pricing and Product Information – Inch Sizes



Made in the U.S.A.

## Socket Head Cap Screws – 1960 Series



### Product Description:

- Heat-treated alloy steel
- Class 3A thread fit standard except as noted
- TORX PLUS® Drive recess available
- DFAR Compliant

### Pricing Notes:

- Net price per 100 available in listed thread series only
- Bulk pricing upon request

Dia. Recess Size TPI	Len. Under Head	UNRC			UNRF			Ct./ Box	Wt./ Box (Lbs)
		Hex EDP No.	TORX PLUS EDP No.	Price Per 100	Hex EDP No.	TORX PLUS EDP No.	Price Per 100		
#0 .050 Hex UNRF 80 TPI	1/8				11035		33.98	100	0.1
	3/16				11038		34.09	100	0.1
	1/4				11041		34.35	100	0.1
	3/8				11044		34.58	100	0.1
#1 1/16 Hex UNRF 72 TPI	1/8				11047		34.09	100	0.1
	3/16				11050		34.35	100	0.1
	1/4				11053		34.45	100	0.1
	3/8				11056		34.93	100	0.1
#2 5/64 Hex UNRC 56 TPI	3/16	10003		32.90				100	0.1
	1/4	10006		33.14				100	0.1
	3/8	10012		33.50				100	0.1
	1/2	10015		33.74				100	0.2
#3 5/64 Hex UNRC 48 TPI	3/16	10024		32.78				100	0.1
	1/4	10027		33.50				100	0.1
	3/8	10030		34.34				100	0.1
	1/2	10033		34.69				100	0.2
#4 3/32 Hex 10 IP TORX PLUS UNRC 40 TPI	3/16	10040		17.74				100	0.2
	1/4	10042	30042	16.90				100	0.2
	5/16	10043		17.15				100	0.2
	3/8	10048	30048	17.26				100	0.2
	1/2	10054	30054	17.61				100	0.3
	5/8	10057	30057	17.74				100	0.3
	3/4	10060	30060	18.20				100	0.3
	7/8	10061		21.14				100	0.3
#5 3/32 Hex 10IP TORX PLUS UNRC 40 TPI	1	10062		21.96				100	0.3
	1-1/4	10065		40.05				100	0.4
	1-1/2	10068		44.39				100	0.5
	1/8	70036		20.48				100	0.1
	1/4	10078	30078	17.03				100	0.2
#5 3/32 Hex 10IP TORX PLUS UNRC 40 TPI	3/8	10084	30084	17.15				100	0.3
	1/2	10090	30090	17.85				100	0.3
	5/8	10093		17.97				100	0.3
	3/4	10096		18.32				100	0.4
	1	10099		28.65				100	0.5

Dia. Recess Size TPI	Len. Under Head	UNRC			UNRF			Ct./ Box	Wt./ Box (Lbs)
		Hex EDP No.	TORX PLUS EDP No.	Price Per 100	Hex EDP No.	TORX PLUS EDP No.	Price Per 100		
#6 7/64 Hex 15IP TORX PLUS UNRC 32 TPI UNRF 40 TPI	1/4	10108	30108	17.15	11062		19.85	100	0.3
	3/8	10114	30114	17.38	11068		20.08	100	0.3
	1/2	10120	30120	17.61	11074		20.43	100	0.4
	5/8	10123	30123	18.20	11077		22.18	100	0.4
	3/4	10126	30126	18.79	11080		24.99	100	0.4
	7/8	10129	30129	20.67				100	0.4
	1	10132	30132	22.78				100	0.5
	1-1/4	10133		26.30				100	0.6
	1-1/2	10136		28.77				100	0.6
	1-3/4	10139		30.53				100	0.8
#8 9/64 Hex 25IP TORX PLUS UNRC 32 TPI UNRF 36 TPI	2	10141		32.65				100	1.2
	1/4	10156	30156	16.79				100	0.4
	5/16	10165		17.03				100	0.5
	3/8	10162	30162	17.26	11089		25.83	100	0.5
	1/2	10168	30168	17.74	11092		26.30	100	0.5
	5/8	10174	30174	17.85				100	0.6
	3/4	10177	30177	19.73	11095		29.72	100	0.7
	7/8	10180	30180	20.67				100	0.7
	1	10186	30186	23.13				100	0.8
	1-1/4	10192	30192	25.37				100	0.9
#10 5/32 Hex 27IP TORX PLUS UNRC 24 TPI UNRF 32 TPI	1-1/2	10198	30198	27.47				100	1.1
	2	10201		34.05				100	1.5
	2-1/2	10208		37.93				100	1.5
	1/4	10210		23.36	11105		24.29	100	0.6
	3/8	10216	30216	17.38	11107	31107	17.74	100	0.6
	1/2	10219	30219	17.74	11113	31113	17.97	100	0.7
	5/8	10225	30225	18.32	11119	31119	19.25	100	0.8
	3/4	10228	30228	19.61	11122	31122	20.08	100	0.9
	7/8	10231	30231	21.26	11125	31125	23.02	100	0.9
	1	10234	30234	23.13	11128	31128	23.61	100	1.0
#10 5/32 Hex 27IP TORX PLUS UNRC 24 TPI UNRF 32 TPI	1-1/4	10240	30240	25.12	11134	31134	26.31	100	1.3
	1-1/2	10246	30246	28.06	11137	31137	29.48	100	1.4
	1-3/4	10249		30.88	11140	31140	32.17	100	1.6
	2	10255	30255	33.47	11143	31143	35.81	100	1.9
	2-1/4	10258		36.40	11145		39.46	100	2.0
	2-1/2	10260		37.86	11147		42.27	100	2.0
	3	10262		50.37	11150		55.80	100	3.0



# Pricing and Product Information – Inch Sizes



Made in  
the U.S.A.

## Socket Head Cap Screws – 1960 Series (continued)

Dia. Recess Size TPI	Len. Under Head	UNRC			UNRF			Ct./ Box	Wt./ Box (Lbs)	
		Hex EDP No.	TORX PLUS EDP No.	Price Per 100	Hex EDP No.	TORX PLUS EDP No.	Price Per 100			
1/4"	1/4	10265		22.31				100	1.0	
	3/8	10267	30267	18.32	11161	31161	20.55	100	1.0	
	1/2	10270	30270	18.79	11164	31164	21.01	100	1.2	
	5/8	10273	30273	19.50	11170	31170	21.37	100	1.4	
	3/4	10276	30276	21.14	11176	31176	23.13	100	1.5	
	7/8	10279	30279	22.78	11179		25.60	100	1.6	
	3/16 Hex	1	10282	30282	24.19	11182	31182	27.13	100	1.8
	30IP	1-1/4	10291	30291	25.95	11188	31188	29.82	100	2.1
	TORX PLUS	1-1/2	10294	30294	29.36	11191	31191	33.00	100	2.5
	UNRC	1-3/4	10300	30300	32.11	11194	31194	36.40	100	2.8
	20 TPI	2	10306	30306	34.76	11200	31200	39.80	100	3.0
	UNRF	2-1/4	10309	30309	43.45	11203		48.85	100	3.4
	28 TPI	2-1/2	10312	30312	48.26				100	3.8
		2-3/4	10315	30315	58.36				100	3.9
		3	10318	30318	64.58				100	4.3
		3-1/4	10319		68.81				100	5.0
		3-1/2	10320		81.14				100	5.0
		4	10322		107.56				100	5.0
5/16"	3/8	10348	30348	30.99				100	1.8	
	1/2	10351	30351	23.95	11221		25.60	100	2.0	
	5/8	10354	30354	25.01	11224		26.77	100	2.3	
	3/4	10357	30357	25.83	11227	31227	28.54	100	2.5	
	7/8	10360	30360	28.30	11230	31230	31.47	100	2.7	
	1	10363	30363	29.00	11233	31233	32.06	100	2.9	
	1-1/4	10369	30369	32.52	11239	31239	33.93	100	3.4	
	1-1/2	10372	30372	34.52	11242	31242	37.93	100	3.9	
	1-3/4	10375	30375	38.75	11248		41.81	100	4.4	
	45IP	2	10381	30381	41.81	11254		46.03	100	4.9
	TORX PLUS	2-1/4	10387	30387	51.67	11257		54.48	100	5.4
	UNRC	2-1/2	10393	30393	56.48	11260		63.17	100	5.9
	18 TPI	2-3/4	10396	30396	76.91				100	6.4
	UNRF	3	10399	30399	88.53				100	6.9
	24 TPI	3-1/4	10402		110.38				100	7.3
		3-1/2	10405	30405	121.65				100	7.8
		4	10410		127.76				100	9.0
		4-1/2	10413		143.49				100	10.5
	5	10416		202.09				100	11.6	

Dia. Recess Size TPI	Len. Under Head	UNRC			UNRF			Ct./ Box	Wt./ Box (Lbs)	
		Hex EDP No.	TORX PLUS EDP No.	Price Per 100	Hex EDP No.	TORX PLUS EDP No.	Price Per 100			
3/8"	1/2	10435	30435	29.48	11275		35.30	100	3.4	
	5/8	10438	30438	30.41	11278		36.29	100	3.4	
	3/4	10441	30441	31.12	11281	31281	36.98	100	4.0	
	7/8	10444	30444	34.05	11284		39.92	100	4.3	
	1	10447	30447	35.23	11287	31287	40.63	100	4.6	
	1-1/4	10450	30450	37.93	11290	31290	43.91	100	5.2	
	5/16 Hex	1-1/2	10456	30456	41.81	11293	31293	48.02	50	3.0
	50IP	1-3/4	10459	30459	47.68	11296	31296	55.07	50	3.3
	TORX PLUS	2	10462	30462	51.43	11299	31299	60.47	50	3.9
	UNRC	2-1/4	10465	30465	64.35	11302		77.27	50	4.3
	16 TPI	2-1/2	10468	30468	69.99	11305		84.54	50	4.5
	UNRF	2-3/4	10471	30471	95.47				50	4.9
	24 TPI	3	10474	30474	104.27	11308		114.61	50	5.1
		3-1/4	10477	30477	124.93				50	5.4
		3-1/2	10483	30483	142.20				50	5.8
		4	10489	30489	167.91				50	6.6
		4-1/2	10495		201.15				50	7.4
		5	10501		240.48				50	8.0
	6	10510		336.29				50	13.0	
7/16"	1/2	10517		63.76				100	5.0	
	5/8	10518		64.70				100	6.0	
	3/4	10519		66.22				100	6.5	
	7/8	10521		70.92				100	6.8	
	1	10525	30525	72.80	11326		80.20	100	7.0	
	3/8 Hex	1-1/4	10528	30528	78.79	11329		85.84	100	7.3
	55IP	1-1/2	10531	30531	86.43	11332		96.64	100	8.1
	TORX PLUS	1-3/4	10537		95.47				100	9.3
	UNRC	2	10540		103.10	11338		112.85	50	5.0
	14 TPI	2-1/4	10543		114.25				50	5.5
	UNRF	2-1/2	10546		120.94				50	6.0
	20 TPI	2-3/4	10549		139.38				25	3.3
	3	10552		150.30				25	3.5	
	3-1/2	10558		173.91				25	4.0	
	4	10564		192.93				25	4.5	

# Pricing and Product Information – Inch Sizes



Made in the U.S.A.

## Socket Head Cap Screws – 1960 Series (continued)

Dia. Recess Size TPI	Len. Under Head	UNRC			UNRF			Ct./ Box	Wt./ Box (Lbs)
		Hex EDP No.	TORX PLUS EDP No.	Price Per 100	Hex EDP No.	TORX PLUS EDP No.	Price Per 100		
1/2" 3/8 Hex 55IP TORX PLUS UNRC 13 TPI UNR 20 TPI	1/2	10573	30573	87.83				50	3.7
	5/8	10576	30576	91.94				50	4.0
	3/4	10579	30579	79.89				50	4.2
	7/8	10582		81.38				50	4.5
	1	10585	30585	81.96	11356		83.72	50	4.8
	1-1/4	10588	30588	85.01	11359		95.23	50	5.3
	1-1/2	10591	30591	96.29	11362		102.51	25	3.2
	1-3/4	10594	30594	106.62	11365		112.85	25	3.4
	2	10597	30597	113.19	11368		121.07	25	3.8
	2-1/4	10600	30600	128.58	11371		135.39	25	4.0
	2-1/2	10606	30606	137.51	11374		142.43	25	4.4
	2-3/4	10609	30609	158.29				25	4.6
	3	10612	30612	168.03	11377		182.36	25	4.9
	3-1/4	10618	30618	183.64				25	5.1
	3-1/2	10621	30621	194.69				25	6.0
	4	10627	30627	234.13				25	6.3
	4-1/2	10633		274.53				25	7.0
	5	10639		304.59				25	7.9
	5-1/2	10645		338.30				25	8.6
	6	10654		361.07				25	9.3
6-1/2	10657		562.80				10	3.8	
7	10660		641.71				10	4.2	
8	10663		800.58				10	5.0	
5/8" 1/2 Hex 70IP TORX PLUS UNRC 11 TPI UNRF 18 TPI	1-1/4	10672		173.95	11404		176.94	50	8.6
	1-1/2	10678		186.76	11407		189.75	50	9.4
	1-3/4	10681		199.07	11410		205.42	50	10.5
	2	10684		211.57	11413		218.09	50	11.2
	2-1/4	10687		227.07				25	6.8
	2-1/2	10690		236.04	11419		242.57	25	7.3
	3	10696		277.56				25	8.4
	3-1/2	10702		304.95				25	9.5
	4	10705		337.73				25	10.5
	4 1/2	10711		451.96				25	11.4
5	10714		504.25				25	12.4	
5 1/2	10717		647.15				10	5.3	

Dia. Recess Size TPI	Len. Under Head	UNRC			UNRF			Ct./ Box	Wt./ Box (Lbs)
		Hex EDP No.	TORX PLUS EDP No.	Price Per 100	Hex EDP No.	TORX PLUS EDP No.	Price Per 100		
3/4" 5/8 Hex UNRC 10 TPI	1-1/2	10747		360.35				25	7.6
	1-3/4	10750		384.66				25	8.4
	2	10753		404.45				25	9.1
	2-1/4	10756		423.45				25	9.9
	2-1/2	10759		442.71				25	10.6
	3	10765		556.40				25	12.3
	3-1/4	10768		583.34				25	13.0
	3-1/2	10771		590.35				25	13.8
	4	10774		629.83				25	15.4
	4-1/2	10777		735.13				25	17.0
	5	10783		819.77				25	25.0
	5-1/2	10789		951.99				10	7.8
	6	10804		1047.02				10	8.5
	2	10873		982.78				10	7.8
	2-1/4	10876		1058.49				10	8.3
2-1/2	10879		1111.38				10	8.8	
2-3/4	10882		1164.27				10	9.3	
3	10885		1224.77				10	9.8	
3-1/4	10888		1292.87				10	10.3	
3-1/2	10891		1361.46				10	10.8	
4	10897		1512.03				10	12.1	
4-1/2	10903		1814.51				10	13.3	
5	10906		1988.39				10	14.5	
5-1/2	10909		2237.86				10	15.6	
6	10930		2358.73				10	16.7	
6-1/2	10933		2903.19				10	17.6	
7	10936		3099.65				10	19.6	
8	10939		3719.58				10	21.4	

# Pricing and Product Information – Inch Sizes



## Camcar® Socket Head Shoulder Screws



### Product Description:

- Heat-treated alloy steel
- Class 3A thread fit standard
- DFAR compliant

### Pricing Notes:

- Net price per 100
- Bulk pricing upon request
- New products shown in **bold text**

Shoulder Dia. Recess Size	Shoulder Length	EDP No.	Thread Size	Price Per 100	Count Per Box	Weight Lb./Box
<b>NEW!</b> 1/8" 5/64 Hex UNC 40 TPI	<b>1/8</b>	<b>81180</b>	4-40	187.20	25	0.3
	<b>3/16</b>	<b>81500</b>	4-40	188.10	25	0.3
	<b>1/4</b>	<b>81503</b>	4-40	189.20	25	0.3
	<b>3/8</b>	<b>81506</b>	4-40	191.40	25	0.3
	<b>1/2</b>	<b>81509</b>	4-40	191.80	25	0.3
<b>NEW!</b> 5/32" 3/32 Hex UNRC 32 TPI	<b>1/8</b>	<b>81512</b>	6-32	187.80	25	0.3
	<b>3/16</b>	<b>81515</b>	6-32	189.70	25	0.3
	<b>1/4</b>	<b>81518</b>	6-32	192.30	25	0.3
	<b>3/8</b>	<b>81521</b>	6-32	193.10	25	0.3
	<b>1/2</b>	<b>81524</b>	6-32	194.00	25	0.3
<b>NEW!</b> 3/16" 3/32 Hex UNRC 32 TPI	<b>1/8</b>	<b>81527</b>	8-32	195.10	25	0.3
	<b>1/4</b>	<b>81213</b>	8-32	197.40	25	0.3
	<b>1/2</b>	<b>81216</b>	8-32	199.10	25	0.3
	<b>3/4</b>	<b>81219</b>	8-32	200.40	25	0.3
	<b>1</b>	<b>81222</b>	8-32	208.30	25	0.3
1/4" 1/8 Hex UNRF 32 TPI UNRC 24 TPI	1/8	81225	10-24	191.00	25	0.4
	<b>1/4</b>	<b>81228</b>	10-32	194.60	25	0.4
	1/4	13755	10-24	133.04	25	0.4
	3/8	13759	10-24	116.36	25	0.4
	<b>1/2</b>	<b>81231</b>	10-32	195.00	25	0.4
	1/2	13762	10-24	117.54	25	0.4
	5/8	13765	10-24	122.12	25	0.4
	<b>3/4</b>	<b>81234</b>	10-32	195.50	25	0.6
	3/4	13768	10-24	125.76	25	0.5
	7/8	80002	10-24	138.39	25	0.6
	<b>1</b>	<b>81237</b>	10-32	197.90	25	0.6
	1	13771	10-24	131.16	25	0.6
	1-1/4	13774	10-24	142.20	25	0.6
	1-1/2	13777	10-24	147.72	25	0.8
	2	13780	10-24	176.01	25	1.2
	2-1/4	80004	10-24	192.78	25	1.6
	2-1/2	80005	10-24	208.74	25	1.8
	3	80007	10-24	214.41	25	2.2
	3-1/4	80008	10-24	358.16	25	2.3
	3-1/2	80009	10-24	373.80	25	2.6
3-3/4	13790	10-24	2782.50	25	2.9	
4	80010	10-24	427.25	25	3.3	

Shoulder Dia. Recess Size	Shoulder Length	EDP No.	Thread Size	Price Per 100	Count Per Box	Weight Lb./Box
5/16" 5/32 Hex UNRC 20 TPI	1/4	13793	1/4-20	163.69	25	0.4
	5/16	81240	1/4-20	200.00	25	0.4
	3/8	13795	1/4-20	137.85	25	0.4
	1/2	13798	1/4-20	139.26	25	0.4
	5/8	13801	1/4-20	141.85	25	0.7
	3/4	13804	1/4-20	144.66	25	0.8
	7/8	80012	1/4-20	155.72	25	0.9
	1	13810	1/4-20	148.19	25	0.9
	1-1/4	13813	1/4-20	162.98	25	1.0
	1-1/2	13816	1/4-20	168.73	25	1.1
	1-3/4	13819	1/4-20	178.01	25	1.3
	2	13822	1/4-20	179.54	25	1.4
	2-1/4	80013	1/4-20	256.31	25	1.5
	2-1/2	80014	1/4-20	266.81	25	1.6
	2-3/4	80015	1/4-20	277.62	25	1.8
	3	80016	1/4-20	367.63	25	2.0
	3-1/2	80018	1/4-20	410.76	25	2.5
	4	80020	1/4-20	441.42	25	2.9
	4-1/2	81000	1/4-20	3220.04	25	3.3
	5	81003	1/4-20	3249.23	10	2.7
3/8" 3/16 Hex UNRC 18 TPI	1/4	13834	5/16-18	206.19	25	0.8
	5/16	81243	5/16-18	382.20	25	0.9
	3/8	13837	5/16-18	156.99	25	0.9
	1/2	13840	5/16-18	159.11	25	1.0
	5/8	13843	5/16-18	160.52	25	1.1
	3/4	13846	5/16-18	163.45	25	1.3
	1	13849	5/16-18	164.62	25	1.4
	1-1/4	13852	5/16-18	174.72	25	1.6
	1-1/2	13855	5/16-18	179.65	25	1.9
	1-3/4	13858	5/16-18	184.82	25	2.1
	2	13861	5/16-18	198.68	25	2.3
	2-1/4	13864	5/16-18	209.13	25	2.4
	2-1/2	13867	5/16-18	230.50	25	2.6
	2-3/4	13870	5/16-18	243.65	25	2.9
	3	13873	5/16-18	256.57	25	3.1
	3-1/4	13876	5/16-18	291.91	25	3.3
	3-1/2	13879	5/16-18	317.16	25	3.5
	3-3/4	13882	5/16-18	362.13	25	3.6
	4	13885	5/16-18	368.47	25	3.9
	4-1/2	80023	5/16-18	510.09	25	4.3
5	80024	5/16-18	494.66	25	4.7	
5-1/2	80025	5/16-18	528.05	25	5.2	
6	81006	5/16-18	4666.62	10	3.0	
6-1/2	81070	5/16-18	5687.54	10	4.0	
7	81073	5/16-18	6183.35	10	5.0	

# Pricing and Product Information – Inch Sizes



Made in  
the U.S.A.

## Camcar® Socket Head Shoulder Screws – continued

Shoulder Dia. Recess Size	Shoulder Length	EDP No.	Thread Size	Price Per 100	Count Per Box	Weight Lb./ Box
<b>1/2"</b> 1/4 Hex UNRC 16 TPI	3/8	13889	3/8-16	298.49	25	1.8
	1/2	13891	3/8-16	253.75	25	2.0
	5/8	13894	3/8-16	265.14	25	2.3
	3/4	13897	3/8-16	266.55	25	2.4
	7/8	80026	3/8-16	281.51	25	2.6
	1	13900	3/8-16	267.96	25	2.8
	1-1/4	13903	3/8-16	274.88	25	3.1
	1-1/2	13906	3/8-16	280.99	25	3.4
	1-3/4	13909	3/8-16	297.08	25	3.8
	2	13912	3/8-16	311.64	25	4.1
	2-1/4	13915	3/8-16	326.78	25	4.5
	2-1/2	13918	3/8-16	337.47	25	4.9
	2-3/4	13921	3/8-16	357.55	25	5.2
	3	13924	3/8-16	378.92	25	5.5
	3-1/4	13927	3/8-16	421.07	25	5.9
	3-1/2	13930	3/8-16	451.49	25	6.2
	3-3/4	13933	3/8-16	505.85	25	6.5
	4	13936	3/8-16	518.42	25	6.9
	4-1/4	13939	3/8-16	613.18	25	7.2
	4-1/2	13942	3/8-16	623.74	10	3.0
	4-3/4	13945	3/8-16	684.68	10	3.2
	5	13948	3/8-16	703.48	10	3.4
	5 1/2	80028	3/8-16	3634.26	10	3.8
	6	81007	3/8-16	3640.04	10	4.3
	6 1/2	81076	3/8-16	5856.69	10	5.6
7	81079	3/8-16	6451.73	10	6.1	
8	81097	3/8-16	6673.38	10	7.9	
<b>5/8"</b> 5/16" Hex UNRC 13 TPI	3/8	13949	1/2-13	1913.42	25	4.1
	3/4	13956	1/2-13	509.08	25	4.5
	1	13958	1/2-13	599.28	25	4.8
	1-1/4	13960	1/2-13	432.87	25	5.1
	1-1/2	13963	1/2-13	458.12	25	5.6
	1-3/4	13966	1/2-13	469.49	25	6.2
	2	13969	1/2-13	486.56	25	6.6
	2-1/4	13972	1/2-13	538.72	25	7.2
	2-1/2	13975	1/2-13	576.17	25	7.8
	2-3/4	13978	1/2-13	599.64	25	8.4
	3	13981	1/2-13	602.60	25	8.9
	3-1/4	13984	1/2-13	771.74	25	9.4
	3-1/2	13987	1/2-13	863.13	25	9.9
	3-3/4	13990	1/2-13	977.27	10	4.2
	4	13993	1/2-13	1021.96	10	4.4
	4-1/4	13996	1/2-13	1148.43	10	4.6
	4-1/2	13999	1/2-13	1177.35	10	4.9
	4-3/4	14002	1/2-13	1262.57	10	5.1
	5	14005	1/2-13	1280.23	10	5.3
	5-1/2	14008	1/2-13	2194.00	10	6.2
	6	14011	1/2-13	2613.64	10	6.6
	6-1/2	81085	1/2-13	6109.20	10	7.2
	7	81088	1/2-13	6545.07	10	7.9

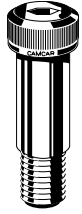
Shoulder Dia. Recess Size	Shoulder Length	EDP No.	Thread Size	Price Per 100	Count Per Box	Weight Lb./ Box
<b>3/4"</b> 3/8 Hex UNRC 11 TPI	1/2	81010	5/8-11	2245.85	10	4.8
	3/4	81013	5/8-11	2266.85	10	5.7
	7/8	81100	5/8-11	2286.17	10	6
	1	81016	5/8-11	2205.00	10	6.3
	1-1/4	81019	5/8-11	2432.54	10	6.8
	1-1/2	14020	5/8-11	872.79	10	7.4
	1-3/4	14023	5/8-11	879.30	10	7.8
	2	14026	5/8-11	836.40	10	8.4
	2-1/4	14029	5/8-11	930.04	10	8.8
	2-1/2	14032	5/8-11	1009.60	10	9.3
	2-3/4	14035	5/8-11	1061.01	10	9.7
	3	14038	5/8-11	1108.69	10	10.1
	3-1/4	14041	5/8-11	1299.83	10	10.5
	3-1/2	14044	5/8-11	1332.10	10	10.9
	3-3/4	14047	5/8-11	1408.34	10	11.3
	4	14050	5/8-11	1451.38	10	11.7
	4-1/4	14053	5/8-11	1620.33	10	12.1
	4-1/2	14056	5/8-11	1639.72	10	12.5
	4-3/4	14059	5/8-11	1795.13	10	12.9
	5	14062	5/8-11	1800.44	10	13.3
	5-1/2	14065	5/8-11	2808.98	10	13.8
	6	14068	5/8-11	3196.96	10	14.4
	6-1/2	81091	5/8-11	7081.73	10	14.9
	7	81061	5/8-11	7210.04	10	15.4
	7-1/2	81064	5/8-11	7851.69	10	15.9
8	81067	5/8-11	7956.69	10	16.4	
<b>1"</b> 1/2 Hex UNRC 10 TPI	1	81022	3/4-10	3272.54	10	7.3
	1-1/2	81025	3/4-10	3622.50	10	8.4
	1-3/4	81028	3/4-10	3855.92	10	8.8
	2	81031	3/4-10	3966.69	10	9.4
	2-1/2	81034	3/4-10	4427.54	10	10.3
	3	81037	3/4-10	4835.78	10	11.1
	3-1/2	81040	3/4-10	5401.73	10	11.9
	4	81043	3/4-10	5699.19	10	12.7
	4-1/2	81103	3/4-10	5944.26	10	13.5
	5	81046	3/4-10	6437.03	10	14.3
5-1/2	81049	3/4-10	6930.00	10	14.8	
6	81052	3/4-10	7589.19	10	15.4	
6-1/2	81055	3/4-10	7985.88	10	15.9	
7	81058	3/4-10	8318.42	10	16.4	

# Pricing and Product Information – Inch Sizes



Made in  
the U.S.A.

## Camcar® Stainless Steel Socket Head Shoulder Screws



### Product Description:

- 300 series (18-8) stainless steel
- Made in USA
- DFAR compliant

### Pricing Notes:

- Net price per/ea. available in listed thread series only
- Bulk pricing available upon request
- New products shown in **bold text**

Shoulder Diameter Recess Size	Shoulder Length	Hex EDP No.	Thread Size	Price Per Each	Count Per Box	Wt. Lb./ Box
<b>NEW!</b> 1/8" 5/64 Hex UNC 40 TPI	<b>1/8</b>	<b>81123</b>	4-40	2.29	25	0.3
	<b>3/16</b>	<b>81126</b>	4-40	2.30	25	0.3
	<b>1/4</b>	<b>81129</b>	4-40	2.30	25	0.3
	<b>3/8</b>	<b>81132</b>	4-40	2.32	25	0.3
	<b>1/2</b>	<b>81135</b>	4-40	2.33	25	0.4
<b>NEW!</b> 5/32" 3/32 Hex UNRC 32 TPI	<b>1/8</b>	<b>81138</b>	6-32	2.41	25	0.4
	<b>3/16</b>	<b>81141</b>	6-32	2.34	25	0.4
	<b>1/4</b>	<b>81144</b>	6-32	2.35	25	0.4
	<b>3/8</b>	<b>81147</b>	6-32	2.37	25	0.4
	<b>1/2</b>	<b>81150</b>	6-32	2.40	25	0.4
<b>NEW!</b> 3/16" 3/32 Hex UNRC 32 TPI	<b>1/8</b>	<b>81153</b>	8-32	2.36	25	0.5
	<b>1/4</b>	<b>81156</b>	8-32	2.41	25	0.5
	<b>1/2</b>	<b>81159</b>	8-32	2.43	25	0.5
	<b>3/4</b>	<b>81162</b>	8-32	2.48	25	0.5
	<b>1</b>	<b>81165</b>	8-32	2.54	25	0.5
1/4" 1/8" Hex UNRF 32 TPI UNRC 24 TPI	1/8	73000	10-24	1.34	25	0.3
	3/16	73003	10-24	1.36	25	0.3
	<b>1/4</b>	<b>81168</b>	10-32	2.54	25	0.6
	1/4	73006	10-24	1.38	25	0.3
	5/16	73009	10-24	1.40	25	0.3
	3/8	73012	10-24	1.41	25	0.3
	<b>1/2</b>	<b>81171</b>	10-32	2.60	25	0.6
	1/2	73015	10-24	1.44	25	0.4
	5/8	73018	10-24	1.50	25	0.4
	<b>3/4</b>	<b>81174</b>	10-32	2.70	25	0.6
	3/4	73021	10-24	1.52	25	0.5
	<b>1</b>	<b>81177</b>	10-32	2.80	25	0.6
	1	73024	10-24	1.61	25	0.5
	1-1/4	73027	10-24	1.71	25	0.6
	1-1/2	73030	10-24	1.80	25	0.7
	1-3/4	73033	10-24	1.92	25	0.8
	2	73036	10-24	2.00	25	0.9
	2-1/4	73039	10-24	2.76	25	1.0
	2-1/2	73042	10-24	2.87	25	1.1
	2-3/4	73045	10-24	2.94	25	1.2
3	73048	10-24	3.02	25	1.3	

Shoulder Diameter Recess Size	Shoulder Length	Hex EDP No.	Thread Size	Price Per Each	Count Per Box	Wt. Lb./ Box	
5/16" 5/32 Hex UNRC 20 TPI	1/4	73051	1/4-20	1.55	25	0.5	
	5/16	73054	1/4-20	1.58	25	0.5	
	3/8	73057	1/4-20	1.61	25	0.5	
	1/2	73060	1/4-20	1.66	25	0.6	
	5/8	73063	1/4-20	1.72	25	0.7	
	3/4	73066	1/4-20	1.79	25	0.7	
	1	73069	1/4-20	1.91	25	0.9	
	1-1/4	73072	1/4-20	2.06	25	1.0	
	1-1/2	73075	1/4-20	2.19	25	1.1	
	1-3/4	73078	1/4-20	2.31	25	1.3	
	2	73081	1/4-20	2.43	25	1.4	
	2-1/4	73084	1/4-20	3.22	25	1.6	
	2-1/2	73087	1/4-20	3.34	25	1.7	
	2-3/4	73090	1/4-20	3.44	25	1.8	
	3	73093	1/4-20	3.61	25	2.0	
	3-1/2	73096	1/4-20	3.84	25	2.2	
	4	73099	1/4-20	4.40	25	2.5	
	3/8" 3/16" Hex UNRC 18 TPI	1/4	73102	5/16-18	2.22	25	0.8
		3/8	73105	5/16-18	2.30	25	0.9
		1/2	73108	5/16-18	2.38	25	1.0
5/8		73112	5/16-18	2.47	25	1.1	
3/4		73115	5/16-18	2.55	25	1.2	
1		73118	5/16-18	2.73	25	1.4	
1-1/4		73121	5/16-18	2.90	25	1.6	
1-1/2		73124	5/16-18	3.06	25	1.8	
1-3/4		73127	5/16-18	3.22	25	2.0	
2		73130	5/16-18	3.42	25	2.2	
2-1/4		73133	5/16-18	4.21	25	2.4	
2-1/2		73136	5/16-18	4.37	25	2.6	
2-3/4		73139	5/16-18	4.58	25	2.8	
3		73142	5/16-18	4.75	25	3.0	
3-1/4		73145	5/16-18	5.29	25	3.2	
3-1/2		73148	5/16-18	5.50	25	3.4	
3-3/4	73151	5/16-18	6.30	25	3.6		
4	73154	5/16-18	6.48	25	3.8		
4-1/2	73157	5/16-18	7.76	25	4.2		
5	73160	5/16-18	8.15	25	4.6		

# Pricing and Product Information – Inch Sizes



## Camcar® Stainless Steel Socket Head Shoulder Screws – *continued*

Shoulder Diameter	Shoulder Length	Hex EDP No.	Thread Size	Price Per Each	Count Per Box	Wt. Lb./ Box
<b>1/2"</b> 1/4 Hex UNRC 16 TPI	3/8	73163	3/8-16	3.07	25	1.8
	1/2	73166	3/8-16	3.22	25	2.0
	5/8	73169	3/8-16	3.36	25	2.1
	3/4	73172	3/8-16	3.52	25	2.3
	1	73175	3/8-16	3.82	25	2.7
	1-1/4	73178	3/8-16	4.11	25	3.0
	1-1/2	73181	3/8-16	4.42	25	3.4
	1-3/4	73184	3/8-16	4.71	25	3.7
	2	73187	3/8-16	5.00	25	4.1
	2-1/4	73190	3/8-16	5.92	25	4.4
	2-1/2	73193	3/8-16	6.22	25	4.8
	2-3/4	73196	3/8-16	6.51	25	5.1
	3	73199	3/8-16	6.80	25	5.5
	3-1/4	73202	3/8-16	7.14	25	5.8
	3-1/2	73205	3/8-16	7.43	25	6.2
	3-3/4	73208	3/8-16	8.94	25	6.5
	4	73211	3/8-16	9.29	25	6.9
	4-1/4	73214	3/8-16	10.08	25	7.3
	4-1/2	73217	3/8-16	10.42	10	3.1
	4-3/4	73220	3/8-16	10.90	10	3.2
5	73223	3/8-16	11.22	10	3.3	
<b>5/8"</b> 5/16 Hex UNRC 13 TPI	1/2	73226	1/2-13	6.52	25	3.4
	5/8	73229	1/2-13	6.66	25	3.6
	3/4	73232	1/2-13	6.93	25	3.9
	1	73235	1/2-13	7.47	25	4.5
	1-1/4	73238	1/2-13	8.02	25	5.0
	1-1/2	73241	1/2-13	8.55	25	5.6
	1-3/4	73244	1/2-13	9.15	25	6.1
	2	73247	1/2-13	9.69	25	6.7
	2 1/4	73250	1/2-13	12.57	25	7.2
	2-1/2	73253	1/2-13	14.31	25	7.8
	2-3/4	73256	1/2-13	15.03	25	8.3
	3	73259	1/2-13	15.56	25	8.9
	3-1/4	73262	1/2-13	16.12	25	9.4
	3-1/2	73265	1/2-13	16.67	25	10.0
	3-3/4	73268	1/2-13	17.31	10	4.2
	4	73271	1/2-13	17.86	10	4.4
4-1/2	73274	1/2-13	18.97	10	4.9	

Shoulder Diameter	Shoulder Length	Hex EDP No.	Thread Size	Price Per Each	Count Per Box	Wt. Lb./ Box
<b>3/4"</b> 3/8 Hex UNRC 11 TPI	1/2	73277	5/8-11	13.67	10	2.3
	5/8	73280	5/8-11	14.03	10	2.5
	3/4	73283	5/8-11	14.59	10	2.6
	1	73286	5/8-11	15.55	10	2.9
	1-1/4	73289	5/8-11	17.09	10	3.3
	1-1/2	73292	5/8-11	17.50	10	3.6
	1-3/4	73295	5/8-11	19.03	10	3.9
	2	73298	5/8-11	20.27	10	4.2
	2-1/4	73301	5/8-11	21.66	10	4.5
	2-1/2	73304	5/8-11	23.05	10	4.8
	2-3/4	73307	5/8-11	25.14	10	5.2
	3	73310	5/8-11	26.11	10	5.5
	3-1/4	73313	5/8-11	27.22	10	5.8
	3-1/2	73316	5/8-11	28.75	10	6.1
	3-3/4	73319	5/8-11	30.27	10	6.4
	4	73322	5/8-11	31.94	10	6.7
	4-1/4	73325	5/8-11	43.05	10	6.9
	4-1/2	73328	5/8-11	44.71	10	7.2
	4-3/4	73331	5/8-11	46.25	10	7.5
	5	73334	5/8-11	47.91	10	7.8
5-1/2	73337	5/8-11	51.38	10	8.5	
6	73340	5/8-11	54.71	10	9.1	
<b>1"</b> 1/2 Hex UNRC 10 TPI	1	73343	3/4-10	25.41	10	5.5
	1-1/2	73346	3/4-10	29.86	10	6.6
	1-3/4	73349	3/4-10	31.66	10	7.2
	2	73352	3/4-10	34.02	10	7.8
	2-1/2	73355	3/4-10	38.74	10	8.9
	3	73358	3/4-10	42.63	10	10.0
	3-1/2	73361	3/4-10	47.35	10	11.2
	4	73364	3/4-10	60.27	10	12.3
5	73367	3/4-10	69.85	10	14.6	

# Pricing and Product Information – Inch Sizes



## Camcar® Stainless Steel Socket Head Shoulder Screws With Locking Nylon Patch



### Product Description:

- 300 series (18-8) stainless steel
- **Locking nylon patch on threads**
- Made in USA
- DFAR compliant

### Pricing Notes:

- Net price per/ea. available in listed thread series only
- Bulk pricing available upon request



Shoulder Dia. Recess Size TPI	Shoulder Length	EDP No.	Thread Size	Price Per Each	Ct. Per Box	Wt. Lb./Box
<b>1/8"</b> 5/64 Hex UNRC 40 TPI	<b>1/4</b>	<b>81318</b>	4-40	248.60	25	0.4
	<b>3/8</b>	<b>81321</b>	4-40	250.30	25	0.4
	<b>1/2</b>	<b>81324</b>	4-40	251.80	25	0.4
	<b>3/4</b>	<b>81327</b>	4-40	254.60	25	0.4
	<b>1</b>	<b>81330</b>	4-40	257.50	25	0.4
<b>5/32"</b> 3/32 Hex UNRC 32 TPI	<b>1/8</b>	<b>81333</b>	6-32	249.40	25	0.4
	<b>1/4</b>	<b>81336</b>	6-32	253.10	25	0.4
	<b>3/8</b>	<b>81339</b>	6-32	251.10	25	0.4
	<b>1/2</b>	<b>81342</b>	6-32	253.10	25	0.4
	<b>3/4</b>	<b>81345</b>	6-32	257.10	25	0.4
<b>3/16"</b> 3/32 Hex UNRC 32 TPI	<b>1</b>	<b>81348</b>	6-32	261.10	25	0.4
	<b>1/8</b>	<b>81351</b>	8-32	255.00	25	0.4
	<b>1/4</b>	<b>81354</b>	8-32	259.50	25	0.4
	<b>3/8</b>	<b>81537</b>	8-32	258.40	25	0.4
	<b>1/2</b>	<b>81560</b>	8-32	261.30	25	0.4
	<b>3/4</b>	<b>81363</b>	8-32	267.10	25	0.4
	<b>1</b>	<b>81366</b>	8-32	272.80	25	0.4

Shoulder Dia. Recess Size TPI	Shoulder Length	EDP No.	Thread Size	Price Per Each	Ct. Per Box	Wt. Lb./Box
<b>1/4"</b> 1/8 Hex UNRC 24 TPI	<b>1/8</b>	<b>81369</b>	10-24	263.10	25	0.5
	<b>1/8</b>	<b>81372</b>	1/4-20	291.80	25	2.0
<b>1/2"</b> 1/4 Hex UNRC 16 TPI	<b>1/4</b>	<b>81375</b>	3/8-16	638.80	25	2.0
	<b>1/2</b>	<b>81378</b>	1/2-13	1280.00	25	3.0
<b>5/8"</b> 5/16 Hex UNRC 13 TPI	<b>5/8</b>	<b>81381</b>	1/2-13	1306.70	25	4.0



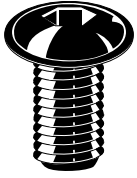


# Pricing and Product Information – Inch Sizes



Made in  
the U.S.A.

## Camcar® Flanged Button Head Cap Screws



### Product Description:

- Heat-treated alloy steel
- Fully threaded
- Large bearing surface
- DFAR compliant

### Pricing Notes:

- Net price per 100 available in listed thread series only
- Bulk pricing upon request

Dia. Drive Size TPI	Length Under Head	Hex EDP Number	Price Per 100	Count Per Box	Weight Lb./100 Pcs.
<b>#8</b> 3/32 Hex UNRC 32 TPI	1/4	16453	15.73	100	0.2
	3/8	16456	16.32	100	0.2
	1/2	16459	17.14	100	0.3
<b>#10</b> 1/8 Hex UNRC 24 TPI	3/8	16462	16.91	100	0.4
	1/2	16465	17.26	100	0.4
	5/8	16468	18.67	100	0.5
<b>#10</b> 1/8 Hex UNRF 32 TPI	3/4	16471	19.84	100	0.6
	3/8	16513	16.91	100	0.4
	1/2	16517	17.26	100	0.4
<b>#10</b> 1/8 Hex UNRF 32 TPI	5/8	16520	18.79	100	0.5
	3/4	16523	19.96	100	0.6
	3/8	16474	18.79	100	0.6
<b>1/4"</b> 5/32 Hex UNRC 20 TPI	1/2	16477	19.14	100	0.8
	3/4	16480	20.43	100	1.1
	1	16483	23.48	100	1.3

Dia. Drive Size TPI	Length Under Head	Hex EDP Number	Price Per 100	Count Per Box	Weight Lb./100 Pcs.
<b>5/16"</b> 3/16 Hex UNRC 18 TPI	3/8	16486	22.90	100	1.0
	1/2	16489	23.25	100	1.3
	5/8	16491	25.83	100	1.5
	3/4	16495	27.12	100	1.7
<b>3/8"</b> 7/32 Hex UNRC 16 TPI	1	16498	30.76	100	1.9
	1/2	16501	32.29	100	1.8
	3/4	16504	40.39	100	2.5
	1	16507	42.86	100	3.2
	1-1/4	16510	46.38	100	3.9

# Pricing and Product Information – Inch Sizes



## Camcar® Low Head Cap Screws



### Product Description:

- Heat-treated alloy steel
- Class 3A thread fit standard
- DFAR compliant

### Pricing Notes:

- Net price per 100 available in listed thread series only
- Bulk pricing upon request

Dia. Recess Size TPI	Length Under Head	UNRC		UNRF		Ct./ Box	Wt./ Box (Lbs)
		Hex EDP No.	Price Per 100	Hex EDP No.	Price Per 100		
#6 5/64 Hex UNRC 32 TPI	1/4	20091	27.26			100	.2
	3/8	20094	27.97			100	.2
	1/2	20097	29.40			100	.2
	5/8	20098	30.58			100	.2
#8 5/64 Hex UNRC 32 TPI	1/4	20103	29.46			100	.2
	3/8	20003	29.63			100	.3
	1/2	20006	31.17			100	.3
	5/8	20009	32.11			100	.3
	3/4	20012	34.85			100	.5
	1	20015	38.05			100	.7
	1-1/4	20105	41.01			100	.7
	1-1/2	20108	43.62			100	.9
#10 3/32 Hex UNRC 24 TPI UNRF 32 TPI	1/4	20111	29.63	20141	30.70	100	.4
	3/8	20018	30.11	21003	31.17	100	.4
	1/2	20021	30.46	21006	32.00	100	.5
	5/8	20024	33.19	21009	33.24	100	.6
	3/4	20027	34.02	21012	34.50	100	.7
	1	20030	36.27	21015	36.57	100	.8
	1-1/4			20144	40.42	100	.8
1-1/2			20147	43.62	100	.9	
1/4" 1/8 Hex UNRC 20 TPI UNRF 28 TPI	1/4	20114	28.57			100	.7
	3/8	20033	30.22			100	.7
	1/2	20036	30.94	20150	34.85	100	.8
	5/8	20039	33.19			100	1.1
	3/4	20042	34.85	20153	39.24	100	1.2
	1	20045	38.05			100	1.3
	1-1/4	20050	39.88			100	1.8
	1-1/2	20117	40.42			100	1.5
	1-3/4	20120	40.97			100	2.1
2	20123	43.56			100	2.5	

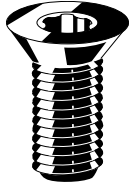
Dia. Recess Size TPI	Length Under Head	UNRC		UNRF		Ct./ Box	Wt./ Box (Lbs)
		Hex EDP No.	Price Per 100	Hex EDP No.	Price Per 100		
5/16" 5/32 Hex UNRC 18 TPI UNRF 24 TPI	1/2	20048	35.56	20159	39.82	100	1.4
	3/4	20051	38.88	20161	42.32	100	1.8
	1	20054	43.14			100	2.2
	1-1/4	20057	48.95			100	2.8
	1-1/2	20060	58.43			100	3.3
	1-3/4	20126	62.87			100	3.7
	2	20129	67.32			100	4.0
3/8" 3/16 Hex UNRC 16 TPI	1/2	20063	48.72			100	2.2
	5/8	20064	53.28			100	2.6
	3/4	20066	53.63			100	2.8
	1	20069	54.29			100	3.5
	1-1/4	20072	63.18			100	4.2
1/2" 1/4 Hex UNRC 13 TPI	1-1/2	20075	69.22			100	5.0
	2	20132	75.03			100	5.8
	3/4	20076	117.82			50	3.7
	1	20078	130.83			50	3.9
	1-1/4	20081	132.87			50	4.1
	1-1/2	20084	148.64			50	4.7
	1-3/4	20135	152.31			50	5.1
2	20138	155.98			50	5.4	

# Pricing and Product Information – Inch Sizes



Made in the U.S.A.

## Camcar® Flat Countersunk Head Cap Screws



### Product Description:

- Heat-treated alloy steel
- Class 3A thread fit standard except as noted
- TORX PLUS® Drive recess available
- DFAR compliant

### Pricing Notes:

- Net price per 100 available in listed thread series only
- Bulk pricing upon request

Dia. Recess Size TPI	Len. Under Head	UNRC			UNRF			Ct./ Box	Wt./ Box (Lbs)
		Hex EDP No.	TORX PLUS EDP No.	Price Per 100	Hex EDP No.	TORX PLUS EDP No.	Price Per 100		
#2 .050 Hex UNRC 56 TPI	3/16	14382		43.56				100	.1
	1/4	14385		46.85				100	.1
	3/8	14387		50.96				100	.1
	1/2	14390		54.72				100	.1
#4 1/16 Hex 10IP TORX PLUS UNRC 40 TPI	1/4	14392	34392	21.14				100	.1
	3/8	14395	34395	21.84				100	.1
	1/2	14398	34398	23.13				100	.1
	5/8	14401	34401	24.19				100	.2
#5 5/64 Hex 10IP TORX PLUS UNRC 40 TPI	3/4	14404	34404	27.59				100	.2
	1/4	14413	34413	22.26				100	.1
	3/8	14416	34416	22.78				100	.1
	1/2	14419	34419	24.19				100	.2
#6 5/64 Hex 15IP TORX PLUS UNRC 32 TPI	5/8	14422		26.77				100	.2
	3/4	14425		30.29				100	.2
	1/4	14434	34434	23.72				100	.1
	3/8	14440	34440	24.31				100	.2
#8 3/32 Hex 20IP TORX PLUS UNRC 32 TPI	1/2	14443	34443	25.01				100	.2
	5/8	14446	34446	27.12				100	.3
	3/4	14449	34449	27.71				100	.3
	1	14451		32.76				100	.3
#10 1/8 Hex 25IP TORX PLUS UNRC 24 TPI	3/8	14458	34458	24.89				100	.3
	1/2	14461	34461	25.86				100	.3
	5/8	14464	34464	26.42				100	.4
	3/4	14467	34467	28.89				100	.4
#10 1/8 Hex 25IP TORX PLUS UNRC 24 TPI	1	14473	34473	32.17				100	.5
	3/8	14482	34482	24.07	14773	34773	24.07	100	.3
	1/2	14485	34485	26.24	14779	34779	26.24	100	.4
	5/8	14488	34488	27.48	14782	34782	27.48	100	.5
	3/4	14491	34491	27.71	14785	34785	27.71	100	.5
	1	14497	34497	33.23	14791	34791	33.23	100	.7
UNRF 32 TPI	1-1/4	14500		42.74	14794	34794	42.74	100	.9
	1-1/2	14503		49.08	14797	34797	49.08	100	1.1

Dia. Recess Size TPI	Len. Under Head	UNRC			UNRF			Ct./ Box	Wt./ Box (Lbs)
		Hex EDP No.	TORX PLUS EDP No.	Price Per 100	Hex EDP No.	TORX PLUS EDP No.	Price Per 100		
1/4" 5/32 Hex 30IP TORX PLUS UNRC 20 TPI UNRF 28 TPI	3/8	14506	34506	27.01	14809		27.01	100	.6
	1/2	14509	34509	26.07	14815	34815	26.07	100	.8
	5/8	14515	34515	27.71	14818	34818	27.71	100	.9
	3/4	14518	34518	27.83	14821	34821	27.83	100	1.1
	7/8	72051		34.64				100	1.2
	1	14524	34524	37.30	14824	34824	37.30	100	1.3
	1-1/4	14527	34527	41.10	14827	34827	41.10	100	1.6
	1-1/2	14530	34530	48.14	14830		48.14	100	2.0
	1-3/4	14533	34533	58.36				100	2.3
	2	14536	34536	63.41				100	2.7
5/16" 3/16" Hex 40IP TORX PLUS UNRC 18 TPI UNRF 24 TPI	2-1/2	14542		69.40				100	3.0
	3	72057		111.43				100	3.5
	1/2	14548	34548	30.88	14839	34839	30.88	100	1.4
	5/8	14554	34554	32.41	14842	34842	32.41	100	1.6
	3/4	14557	34557	32.88	14845	34845	32.88	100	1.8
	7/8	14560		34.05	14846		34.05	100	2.1
	1	14563	34563	35.23	14848	34848	35.23	100	2.3
	1-1/4	14566	34566	44.97	14851		44.97	100	2.7
	1-1/2	14572	34572	49.90	14854		49.90	100	3.2
	1-3/4	14575	34575	71.63				100	3.8
3/8" 7/32 Hex 45IP TORX PLUS UNRC 16 TPI UNRF 24 TPI	2	14578	34578	78.91				100	4.3
	2-1/4	14581		91.12				100	4.8
	2-1/2	14584		102.27				100	5.3
	1/2	14590	34590	47.67				100	2.2
	5/8	14593	34593	48.94	14866	34866	48.94	100	2.5
	3/4	14596	34596	49.43	14869	34869	49.43	100	2.8
3/8" 7/32 Hex 45IP TORX PLUS UNRC 16 TPI UNRF 24 TPI	1	14602	34602	49.90	14872	34872	49.90	100	3.6
	1-1/4	14605	34605	53.19	14875	34875	53.19	100	4.1
	1-1/2	14608	34608	56.01	14878		56.01	100	4.8
	1-3/4	14611	34611	81.14				100	5.4
	2	14614	34614	89.24				100	6.2
	2-1/4	14617		106.15				100	6.9
	2-1/2	14620	34620	114.60				50	3.9
	3	14626		135.50				50	4.6

# Pricing and Product Information – Inch Sizes



Made in  
the U.S.A.

## Camcar® Flat Countersunk Head Cap Screws – *continued*

Dia. Recess Size TPI	Len. Under Head	UNRC			UNRF			Ct./ Box	Wt./ Box (Lbs)
		Hex EDP No.	TORX PLUS EDP No.	Price Per 100	Hex EDP No.	TORX PLUS EDP No.	Price Per 100		
<b>7/16"</b> 1/4 Hex 50IP TORX PLUS UNRC 14 TPI	3/4	14635		97.58				100	3.6
	1	14638	34638	107.21				100	4.5
	1-1/4	14641		117.42				100	5.3
	1-1/2	14644		125.41				100	6.2
	1-3/4	14647		131.28				100	7.1
	2	14650		136.68				100	8.8
<b>1/2"</b> 5/16 Hex 50IP TORX PLUS UNRC 13 TPI UNRF 20 TPI	3/4	14653	34653	99.90	14884		99.90	100	4.5
	1	14662	34662	104.44	14887		104.44	100	5.7
	1-1/4	14665	34665	120.36	14890		120.36	100	6.7
	1-1/2	14668	34668	127.17	14893		127.17	100	7.7
	1-3/4	14671	34671	143.56	14896		143.56	50	4.5
	2	14674	34674	149.55	14902		149.55	50	5.1
	2-1/4	14677		179.21				25	2.9
	2-1/2	14680		192.74				25	3.3
	3	14686		220.01				25	4.0

Dia. Recess Size TPI	Len. Under Head	UNRC			UNRF			Ct./ Box	Wt./ Box (Lbs)
		Hex EDP No.	TORX PLUS EDP No.	Price Per 100	Hex EDP No.	TORX PLUS EDP No.	Price Per 100		
<b>5/8"</b> 3/8 Hex 55IP TORX PLUS UNRC 11 TPI	1-1/4	14698		226.96				25	5.7
	1-1/2	14701		247.65				25	6.5
	1-3/4	14704		286.53				25	7.4
	2	14707		298.62				25	8.3
	2 1/4	14710		305.29				25	9.00
	2-1/2	14713		311.96				25	9.3
	3	14719		340.31				25	11.4

# Pricing and Product Information – Inch Sizes



## Camcar® Socket Set Screws – Cup Point



### Product Description:

- Heat-treated alloy steel
- Class 3A thread fit standard
- TORX PLUS® Drive recess available
- DFAR compliant

### Pricing Notes:

- Net price per 100 available in listed thread series only
- Bulk pricing available upon request

Dia. Recess Size TPI	Len. Under Head	UNRC			UNRF			Ct./ Box	Wt./ Box (Lbs)
		Hex EDP No.	TORX PLUS EDP No.	Price Per 100	Hex EDP No.	TORX PLUS EDP No.	Price Per 100		
#0 .028 Hex 80 TPI	1/16	74100		57.96				100	.1
	3/32	74103		59.64				100	.1
	1/8	74106		61.22				100	.1
	5/32	73500		66.12				100	.1
	3/16	74109		69.30				100	.1
	1/4	74112		78.86				100	.1
#1 .035 Hex 72 TPI	1/16	74115		55.65				100	.1
	3/32	74118		57.86				100	.1
	1/8	74121		67.31				100	.1
	3/16	74124		74.55				100	.1
	1/4	74127		79.17				100	.1
#2 .035 Hex UNC 56 TPI	1/16	11449		56.83				100	.1
	3/32	11450		59.18				100	.1
	1/8	11452		59.88				100	.1
	3/16	11455		62.59				100	.1
	1/4	11458		63.41				100	.1
#3 .050 Hex UNC 48 TPI	3/32	11463		46.50				100	.1
	1/8	11464		46.97				100	.1
	3/16	11467		47.67				100	.1
	1/4	11470		48.14				100	.1
	1/16	74130		26.04				100	.1
	3/32	74133		28.28				100	.1
#4 .050 Hex UNC 40 TPI UNF 48 TPI	1/8	11473		15.97	11962		15.97	100	.1
	3/16	11476		16.20	11965		16.20	100	.1
	1/4	11479		16.32	11968		16.32	100	.1
	5/16	11482		16.56				100	.1
	3/8	11485		17.61				100	.1
	1/2	11491		20.67				100	.2
	5/8	11494		25.01				100	.2
#5 1/16 Hex UNC 40 TPI UNF 44 TPI	1/8	11497		17.14	11977		17.14	100	.1
	3/16	11500		17.50				100	.1
	1/4	11503		17.85				100	.1
	5/16	11506		18.08				100	.1
	3/8	11509		19.93				100	.2
	1/2	11515		21.14				100	.2
	5/8	11518		21.96				100	.3
	3/4	11521		23.01				100	.3

Dia. Recess Size TPI	Len. Under Head	UNRC			UNRF			Ct./ Box	Wt./ Box (Lbs)
		Hex EDP No.	TORX PLUS EDP No.	Price Per 100	Hex EDP No.	TORX PLUS EDP No.	Price Per 100		
#6 1/16 Hex 6IP TORX PLUS (UNC) 7IP TORX PLUS (UNF) UNC 32 TPI UNF 40 TPI	1/8	11524		18.79	11986		18.79	100	.1
	3/16	11527	31527	16.79	11989		16.79	100	.1
	1/4	11530	31530	17.03	11992		17.03	100	.1
	5/16	11533		17.26				100	.1
	3/8	11536	31536	17.50	11998		17.50	100	.2
	1/2	11542		18.55				100	.3
	5/8	11545		25.01				100	.3
	3/4	11548		27.95				100	.4
	7/8	11551		38.75				100	.4
	1	11554		41.57				100	.4
#8 5/64 Hex 8IP TORX PLUS UNC 32 TPI UNF 36 TPI	1/8	11557		15.62				100	.1
	3/16	11560	31560	15.85	12004		15.86	100	.1
	1/4	11563	31563	16.09	12007		16.09	100	.1
	5/16	11566		16.44				100	.2
	3/8	11569	31569	16.91	12013	32013	16.91	100	.2
	7/16	74136		19.01				100	.3
	1/2	11575		19.14				100	.3
	5/8	11578		26.18				100	.3
	3/4	11581		27.71				100	.4
	7/8	11584		36.87				100	.4
#10 3/32 Hex 10IP TORX PLUS UNC 24 TPI UNF 32 TPI	1	11587		40.86				100	.5
	3/16	11590		16.09	12022		16.09	100	.2
	1/4	11593	31593	16.44	12025	32025	16.44	100	.2
	5/16	11596	31596	16.91	12028		16.91	100	.2
	3/8	11599	31599	18.20	12031	32031	18.20	100	.3
	1/2	11602		19.61	12037	32037	19.61	100	.3
	5/8	11605		20.43	12040	32040	20.43	100	.4
	3/4	11608		23.13	12043	32043	23.13	100	.5
	7/8	11611		38.75				100	.6
	1	11617		42.74	12049			100	.7
1-1/4	11620		44.74	12052			100	.8	
1-1/2				74139		57.75	100	1.0	

# Pricing and Product Information – Inch Sizes



Made in  
the U.S.A.

## Camcar® Socket Set Screws – Cup Point, *continued*

Dia. Recess Size TPI	Len. Under Head	UNRC			UNRF			Ct./ Box	Wt./ Box (Lbs)
		Hex EDP No.	TORX PLUS EDP No.	Price Per 100	Hex EDP No.	TORX PLUS EDP No.	Price Per 100		
<b>1/4"</b> 1/8 Hex 15IP TORX PLUS (UNC) 20IP TORX PLUS (UNF) UNC 20 TPI UNF 28 TPI	3/16	11626		17.61	12061	32061	17.61	100	.2
	1/4	11629	31629	16.09	12064	32064	16.09	100	.3
	5/16	11632	31632	16.44	12067	32067	16.44	100	.3
	3/8	11635	31635	17.97	12070	32070	17.97	100	.4
	1/2	11641	31641	19.02	12076	32076	19.02	100	.5
	5/8	11644		22.78	12079	32079	22.78	100	.6
	3/4	11647	31647	25.83	12082	32082	25.83	100	.7
	7/8	11650		32.64				100	.8
	1	11653		37.11	12085		37.11	100	.9
	1-1/4	11656		46.97	12088		46.97	100	1.2
	1-1/2	11659		59.06	73616		59.06	100	1.5
	1-3/4	11662		75.50				100	1.9
2	11665		86.07				100	2.2	
3	73615		95.55				100	3.5	
<b>5/16"</b> 5/32 Hex 25IP TORX PLUS (UNC) 27IP TORX PLUS (UNF) UNC 18 TPI UNF 24 TPI	1/4	11671		19.26	12094		19.26	100	.4
	5/16	11674	31674	18.20	12097		18.20	100	.5
	3/8	11677	31677	18.44	12100		18.44	100	.6
	7/16	11680		18.90				100	.7
	1/2	11683	31683	19.26	12106		19.26	100	.8
	5/8	11686		24.42	12109		24.42	100	1.0
	3/4	11689		28.18	11687		28.18	100	1.2
	7/8	11692		39.45				100	1.4
	1	11695		42.04	12118		42.04	100	1.6
	1-1/4	11698		48.14	73627		48.14	100	1.9
	1-1/2	11701		63.76	73628		63.76	100	2.4
	1-3/4	11704		78.79				100	3.0
2	11707		83.72				100	3.4	
2-1/2	73624		115.29				100	4.4	
<b>3/8"</b> 3/16 Hex UNC 16 TPI UNF 24 TPI	1/4	11713		23.72	12124		23.72	100	.6
	5/16	11716		25.25				100	.6
	3/8	11719		21.14	12130		21.14	100	.8
	7/16	11722		21.84				100	.9
	1/2	11725		24.66	12136		24.66	100	1.1
	5/8	11728		28.53	12139		28.53	100	1.3
	3/4	11731		30.53	12142		30.53	100	1.8
	7/8	11734		33.71				100	2.1
	1	11737		42.04	12148		42.04	100	2.3
	1-1/4	11740		53.31	12151		53.31	100	2.7
	1-1/2	11743		69.40	12134		69.40	100	3.6
	1-3/4	11746		84.31				100	3.6
2	11749		92.49	73648		92.49	100	5.0	
2-1/2	11752		106.85				100	6.3	
4	73643		117.08				50	11.7	

Dia. Recess Size TPI	Len. Under Head	UNRC			UNRF			Ct./ Box	Wt./ Box (Lbs)	
		Hex EDP No.	TORX PLUS EDP No.	Price Per 100	Hex EDP No.	TORX PLUS EDP No.	Price Per 100			
<b>7/16"</b> 7/32 Hex UNC 14 TPI UNF 20 TPI	3/8	11755		47.43	12163		47.43	100	1.1	
	7/16	11758		49.04				100	1.2	
	1/2	11761		51.20	12169		51.20	100	1.4	
	5/8	11764		55.89				100	1.7	
	3/4	11767		60.35	73672		81.38	100	2.2	
	7/8	11770		69.09				100	2.6	
	1	11773		77.85	73675		90.41	100	3.0	
	1-1/4	11776		83.60				100	4.1	
	1-1/2	11779		97.58	73678		121.19	100	4.5	
	2	11782		122.94	73681		131.71	50	3.4	
	<b>1/2"</b> 1/4 Hex 45IP TORX PLUS UNC 13 TPI UNF 20 TPI	3/8	11794		62.21				100	1.3
		1/2	11800		61.37	12187		61.37	100	1.7
5/8		11803		67.47				100	2.2	
3/4		11806		69.87	12193		69.87	100	2.9	
7/8		11809		78.12				100	3.3	
1		11812		88.29	12196		88.29	100	3.9	
1-1/4		11815		111.02				100	5.0	
1-1/2		11818		123.58				100	6.2	
1-3/4		11821		143.09	73702		362.25	50	3.7	
2		11824		161.99	73703		410.03	50	4.3	
2-1/2		11830		208.52	73705		516.29	50	5.4	
3		11833		217.02				50	6.5	
3-1/2	73692		217.50				25	4.5		
4	73693		217.94				25	4.8		
<b>5/8"</b> 5/16 Hex UNC 11 TPI UNF 18 TPI	1-1/2				73735		517.65	10	3.2	
	4"	73725		622.08				10	6.1	
<b>3/4"</b> 3/8 Hex UNC 10 TPI UNF 16 TPI	5/8	11875		238.25				10	2.7	
	3/4	11878		393.65				10	2.9	
	1	11881		439.74	73751		537.18	10	3.0	
	1-1/4	11884		460.53				10	3.5	
	1-1/2	11887		481.32				10	3.8	
	2	11893		512.72				10	4.8	
3	11899		951.72				10	5.9		
<b>7/8"</b> 1/2 Hex UNC 9 TPI	2	11926		1552.64				10	6.9	
	<b>1"</b> 9/16 Hex UNC 8 TPI	1	11935		869.51				10	7.6
1-1/2		11941		1130.75				10	7.9	
2		11944		1458.66				10	8.9	
3		11950		1794.87				10	9.7	

# Pricing and Product Information – Inch Sizes



Made in  
the U.S.A.

## Camcar® Socket Set Screws – Flat Point



### Product Description:

- Heat-treated alloy steel
- Class 3A thread fit standard
- DFAR compliant

### Pricing Notes:

- Net price per 100 available in listed thread series only
- Bulk pricing available upon request

Dia. Recess Size TPI	Length	UNRC		UNRF		Ct./ Box	Wt./ Box (Lbs)
		Hex EDP No.	Price Per 100	Hex EDP No.	Price Per 100		
#3 .050 Hex UNC 48 TPI	1/8	12242	47.36			100	0.1
	3/16	12243	47.57			100	0.1
#4 .050 Hex UNC 40 TPI	1/8	12466	16.80			100	0.1
	1/4	12472	17.96			100	0.1
#6 1/16 Hex UNC 32 TPI	3/16	12496	18.90			100	0.1
	1/4	12499	19.22			100	0.1
	3/8	12505	19.74			100	0.2
#8 5/64 Hex UNC 32 TPI	3/16	12520	19.22			100	0.1
	1/4	12523	19.53			100	0.1
	3/8	12529	20.37			100	0.2
	1/2	12532	20.90			100	0.3
#10 3/32 Hex UNC 24 TPI UNF 32 TPI	3/16	12541	20.37	12685	20.37	100	0.2
	1/4	12544	20.90	12688	20.90	100	0.2
	5/16	12547	21.53			100	0.2
	3/8	12550	22.16	12808	22.16	100	0.3
	1/2			12785	23.10	100	0.3
	3/4			12809	24.78	100	0.5
	1			12896	42.11	100	0.7

Dia. Recess Size TPI	Length	UNRC		UNRF		Ct./ Box	Wt./ Box (Lbs)
		Hex EDP No.	Price Per 100	Hex EDP No.	Price Per 100		
1/4" 1/8 Hex UNC 20 TPI UNF 28 TPI	1/4	12568	19.22	12712	19.22	100	0.3
	5/16	12571	19.74			100	0.3
	3/8	12574	20.37	12715	20.37	100	0.4
	1/2	12580	21.63	12716	21.63	100	0.6
	5/8	12583	24.26	12714	24.26	100	0.7
	3/4	12586	28.46			50	0.8
	1	12592	38.22			50	0.9
	1-1/2	12593	60.90			50	1.5
	2	12594	90.09			50	2.2
	5/16" 5/32 Hex UNC 18 TPI UNF 24 TPI	5/16	12601	20.58			100
3/8		12604	21.42	12720	21.42	100	0.6
1/2		12607	23.10	12253	23.10	100	0.8
5/8		12610	25.52			100	1
3/4		12613	30.56	12362	30.56	50	1.2
1		12616	39.69			50	1.6
3/8" 3/16 Hex UNC 16 TPI UNF 24 TPI	3/8	12631	24.26	12721	24.26	50	0.8
	1/2	12634	26.57	12727	26.57	50	1.1
	5/8	12637	29.19			50	1.3
	3/4	12640	31.19	12860	31.19	50	1.8
	1	12643	42.11			50	2.3
1/2" 1/4 Hex UNC 13 TPI UNF 20 TPI	1/2	12658	66.26	12742	66.26	50	1.7
	5/8	12661	69.30			50	2.2
	3/4	12664	71.51			50	2.9
	1	12667	85.47			50	3.9
	1-1/4	12669	114.56			50	5

# Pricing and Product Information – Inch Sizes



## Camcar® Socket Set Screws – Knurled Cup Point



### Product Description:

- Heat-treated alloy steel
- Class 3A thread fit standard
- DFAR compliant

### Pricing Notes:

- Net price per 100 available in listed thread series only
- Bulk pricing available upon request

Dia. Recess Size TPI	Length Under Head	UNRC		UNRF		Ct./ Box	Wt./ Box (Lbs)
		Hex EDP No.	Price Per 100	Hex EDP No.	Price Per 100		
#4 .050 Hex UNC 40 TPI	1/8	13135	17.43			100	.1
#6 1/16 Hex UNC 32 TPI	1/8	13180	16.59			100	.1
	3/16	13183	16.83			100	.1
	1/4	13186	17.19			100	.1
#8 5/64 Hex UNC 32 TPI	1/8	13210	16.24			100	.1
	3/16	13213	18.80			100	.2
	1/4	13216	17.19			100	.2
	3/8	13222	17.07			100	.2
#10 3/32 Hex UNC 24 TPI UNF 32 TPI	3/16	13240	16.71	13627	16.71	100	.2
	1/4	13243	17.07	13630	17.07	100	.2
	3/8	13246	18.13	13636	18.13	100	.3
	1/2			13639	20.90	100	.3
1/4" 1/8 Hex UNC 20 TPI UNF 28 TPI	3/16	13270	17.31	13654	17.30	100	.2
	1/4	13271	17.19	13273	17.19	100	.3
	5/16	13276	17.82	13660	17.82	100	.3
	3/8	13279	18.02	13663	18.02	100	.4
	1/2	13282	19.08			100	.5
	5/8	13285	22.88			100	.6
	3/4	13288	26.67			100	.7

Dia. Recess Size TPI	Length Under Head	UNRC		UNRF		Ct./ Box	Wt./ Box (Lbs)
		Hex EDP No.	Price Per 100	Hex EDP No.	Price Per 100		
5/16" 5/32 Hex UNC 18 TPI UNF 24 TPI	1/4	13309	20.27	13681	20.27	100	.4
	5/16	13312	18.13	13684	40.22	100	.5
	3/8	13315	18.37	13687	22.05	100	.6
	1/2	13321	19.68	13690	22.89	100	.8
3/8" 3/16 Hex UNC 16 TPI UNF 24 TPI	3/8	13354	21.34	13711	21.34	100	.8
	1/2	13360	22.88	13714	22.88	100	1.1
	5/8	13363	25.84			100	1.2
	3/4	13366	27.62			100	1.3
1/2" 1/4 Hex UNC 13 TPI	1/2	13426	120.96			100	2.4

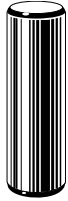


# Pricing and Product Information – Inch Sizes



Made in  
the U.S.A.

## Camcar® Precision Hardened Ground Machine Dowel Pins



### Product Description:

- Heat-treated alloy steel
- Standard size (.0002 over nominal diameter)
- DFAR compliant

### Pricing Notes:

- Net price per 100
- Bulk pricing available upon request

Dia. Overall	Length	EDP No.	Price Per 100	Count Per Box	Wt. Lb./Box
1/16"	3/16	15766	26.56	100	.05
	1/4	15769	26.93	100	.05
	3/8	15775	27.29	100	.1
	1/2	15781	28.51	100	.1
	5/8	15784	28.76	100	.1
	3/4	15787	29.12	100	.1
3/32"	3/16	15736	25.22	100	.06
	1/4	15739	25.35	100	.06
	5/16	15742	25.47	100	.06
	3/8	15745	25.71	100	.06
	7/16	15748	26.56	100	.1
	1/2	15751	27.05	100	.1
	5/8	15754	27.54	100	.1
	3/4	15757	27.78	100	.1
1	15763	28.03	100	.2	
1/8"	3/8	15802	26.20	100	.5
	1/2	15808	26.56	100	.5
	5/8	15811	26.80	100	.5
	3/4	15814	28.11	100	.5
	7/8	15817	30.39	100	.5
	1	15820	33.02	100	.5
	1-1/4	15826	33.86	100	.5
	1-1/2	15832	39.12	100	.5
	1-3/4	15835	42.71	100	.5
	2	15838	46.90	100	.5
3/16"	1/2	15841	28.23	100	.5
	5/8	15844	28.95	100	.5
	3/4	15847	31.11	100	.5
	7/8	15850	33.02	100	.5
	1	15853	34.46	100	1.0
	1-1/4	15859	38.28	100	1.0
	1-1/2	15865	42.35	100	1.0
	1-3/4	15868	47.02	100	1.5
	2	15871	52.28	100	1.5
	1/4"	1/2	15874	31.70	100
5/8		15877	33.38	100	1.0
3/4		15880	33.98	100	1.0
7/8		15883	37.09	100	1.5
1		15886	38.04	100	1.5
1-1/4		15892	41.39	100	2.0
1-1/2		15898	46.42	100	2.0
1-3/4		15901	52.52	100	2.5
2		15904	58.14	100	3.0
2-1/4		15907	70.94	100	3.5
2-1/2	15910	72.26	100	3.5	

Dia. Overall	Length	EDP No.	Price Per 100	Count Per Box	Wt. Lb./Box
5/16"	1/2	15919	39.00	100	1.0
	5/8	15922	40.92	100	1.5
	3/4	15925	42.23	100	1.5
	7/8	15928	43.28	100	2.0
	1	15931	43.43	100	2.0
	1-1/4	15937	48.09	100	3.0
	1-1/2	15943	53.84	100	3.5
	1-3/4	15946	65.32	100	4.0
	2	15952	70.47	100	4.5
	2-1/2	15958	87.69	100	5.5
3	15961	104.80	100	6.5	
3/8"	1/2	15967	47.85	20	.3
	5/8	15970	49.65	20	.4
	3/4	15973	50.97	20	.5
	7/8	15976	52.28	20	.6
	1	15979	53.00	20	.7
	1-1/4	15985	56.83	20	.8
	1-1/2	15991	64.60	20	1.0
	1-3/4	15994	74.17	20	1.1
	2	15997	81.59	20	1.3
	2-1/4	16000	89.25	20	1.4
2-1/2	16003	101.69	20	1.6	
3	16009	125.50	20	1.9	
7/16"	1	16021	98.46	20	.9
	1-1/4	16024	106.12	20	1.0
	1-1/2	16027	113.77	20	1.3
	2	16033	129.10	20	2.1
	3/4	16051	105.40	20	.8
1/2"	1	16057	111.62	20	1.1
	1-1/4	16060	118.92	20	1.4
	1-1/2	16063	126.34	20	1.7
	1-3/4	16066	134.47	20	2.0
	2	16069	149.55	20	2.2
	2-1/4	16072	168.09	20	2.5
	2-1/2	16075	180.17	20	2.8
	3	16081	214.39	20	3.3
5/8"	1-1/4	16099	191.31	10	1.1
	1-1/2	16102	198.99	10	1.3
	1-3/4	16106	230.79	10	1.5
	2	16108	249.80	10	1.8
	2-1/2	16114	294.03	10	2.3
	3	16120	348.86	10	2.6

# Pricing and Product Information – Metric Sizes



## Camcar® Socket Head Cap Screws



### Product Description:

- Class 12.9
- Standard package
- DFAR compliant

### Pricing Notes:

- Net price per 100 available in listed thread series only
- Bulk pricing upon request

Dia. Thread Pitch Key Size	Length Under Head	Hex EDP No.	Price Per 100	Ct./Box	Weight Lbs/Box
<b>M3</b> 0.5 Pitch 2.5mm Hex	6	60003	20.94	100	0.071
	8	60005	18.84	100	0.080
	10	60007	19.08	100	0.088
	12	60009	19.89	100	0.096
	16	60011	20.24	100	0.116
	20	60013	20.94	100	0.138
	25	60015	25.01	100	0.161
<b>M4</b> 0.7 Pitch 3mm Hex	8	60025	19.08	100	0.165
	10	60027	19.42	100	0.180
	12	60029	20.24	100	0.195
	16	60031	21.17	100	0.225
	20	60033	22.68	100	0.265
	25	60035	25.59	100	0.315
	30	60037	25.76	100	0.365
	35	60039	27.10	100	0.415
	40	60041	32.17	100	0.465
<b>M5</b> 0.8 Pitch 4mm Hex	45	60043	35.80	100	0.515
	50	60045	41.13	100	0.565
	8	60047	23.84	100	0.245
	10	60049	20.94	100	0.270
	12	60051	22.68	100	0.295
	16	60053	23.73	100	0.345
	20	60055	24.43	100	0.401
<b>M6</b> 1.0 Pitch 5mm Hex	25	60057	25.12	100	0.478
	30	60059	26.40	100	0.555
	10	60071	20.70	100	0.470
	12	60073	21.40	100	0.507
	16	60075	22.68	100	0.575
	20	60077	23.73	100	0.653
	25	60079	25.36	100	0.759
	30	60081	27.22	100	0.870
	35	60083	31.40	100	0.991
	40	60085	33.15	100	1.10
	50	60089	37.26	100	1.32

Dia. Thread Pitch Key Size	Length Under Head	Hex EDP No.	Price Per 100	Ct./Box	Weight Lbs/Box
<b>M8</b> 1.25 Pitch 6mm Hex	12	60103	27.47	100	1.08
	16	60105	28.06	100	1.21
	20	60107	29.36	100	1.34
	25	60109	32.41	100	1.50
	30	60111	34.52	100	1.69
	35	60113	37.57	100	1.89
	40	60115	39.57	100	2.09
	50	60119	47.78	100	2.49
	<b>M10</b> 1.5 Pitch 8mm Hex	16	60133	41.56	100
20		60135	42.04	100	2.29
25		60137	43.09	100	2.54
30		60139	45.09	100	2.79
35		60141	49.32	100	3.10
40		60143	53.19	100	3.41
45		60145	56.36	50	3.72
50		60147	60.24	50	4.03
60		60151	74.92	50	4.65
70		60155	96.87	50	5.27
<b>M12</b> 1.75 Pitch 10mm Hex		20	60165	84.54	50
	25	60167	87.83	50	3.57
	30	60169	90.41	50	3.93
	35	60171	101.45	50	4.29
	40	60173	117.07	50	4.73
	45	60175	127.52	50	5.17
	50	60177	135.16	50	5.61
	55	60179	146.78	25	6.05
	60	60181	156.29	25	6.49
<b>M16</b> 2.0 Pitch 14mm Hex	30	60199	195.86	25	7.78
	35	60201	215.35	25	8.44
	40	60203	217.46	25	9.10
	45	60205	239.31	25	9.76
	50	60207	247.11	25	10.6
	55	60209	266.90	25	11.4
	60	60211	276.88	25	12.2

# Pricing and Product Information – Metric Sizes



Made in  
the U.S.A.

## Camcar® Socket Head Shoulder Screws



### Product Description:

- Heat-treated alloy steel
- DFAR compliant

### Pricing Notes:

- Net price per 100 unless otherwise noted
- Bulk pricing upon request

**NEW!**

Shoulder Dia. Recess Size	Shoulder Length	EDP No.	Thread Dia.	Thread Pitch	Price Per 100	Count Per Box	Wt. Lb./Box
<b>4mm</b> 2mm	6mm	81387	M3	0.5	222.20	25	0.4
	8mm	81390	M3	0.5	224.30	25	0.4
	12mm	81393	M3	0.5	226.10	25	0.4
	16mm	81396	M3	0.5	227.80	25	0.4
	20mm	81399	M3	0.5	229.90	25	0.4
<b>5mm</b> 2.5mm	6mm	81402	M4	0.7	227.70	25	0.4
	8mm	81405	M4	0.7	229.00	25	0.4
<b>6mm</b> 3mm	6mm	81408	M5	0.8	231.80	25	0.6
	14mm	81411	M5	0.8	232.60	25	0.6
<b>8mm</b> 4mm	14mm	81414	M6	1.0	278.20	25	0.6
<b>10mm</b> 5mm	14mm	81417	M8	1.25	458.30	25	1.0

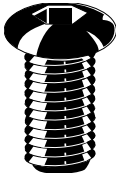
Shoulder Dia. Recess Size	Shoulder Length	EDP No.	Thread Dia.	Thread Pitch	Price Per 100	Count Per Box	Wt. Lb./Box
<b>12mm</b> 6mm	10mm	81420	M10	1.5	17.80 EACH	10	1.0
	14mm	81423	M10	1.5	18.80 EACH	10	1.0
<b>16mm</b> 8mm	14mm	81426	M12	1.75	22.50 EACH	10	1.0
<b>20mm</b> 10mm	20mm	81429	M16	2.0	26.60 EACH	10	2.0
	25mm	81432	M16	2.0	27.30 EACH	10	2.0
<b>24mm</b> 12mm	40mm	81435	M20	2.5	45.80 EACH	10	2.0
	45mm	81438	M20	2.5	47.50 EACH	10	2.0
	55mm	81441	M20	2.5	49.30 EACH	10	2.0

# Pricing and Product Information – Metric Sizes



Made in  
the U.S.A.

## Camcar® Socket Head Button Head Screws



### Product Description:

- Heat-treated alloy steel
- DFAR compliant

### Pricing Notes:

- Net price per 100 available in listed thread series only
- Bulk pricing upon request

Diameter Thread Pitch Key Size	Length Under Head	Hex EDP No.	Price Per 100	Ct./Box	Weight Lb/Box
<b>M3</b> 0.50 Pitch 2mm Hex	6	77109	15.62	100	0.048
	8	60405	16.44	100	0.050
	10	60407	16.79	100	0.064
	12	60409	17.61	100	0.073
	16	77112	18.83	100	0.19
<b>M4</b> 0.70 Pitch 2.5mm Hex	8	60411	18.55	100	0.118
	10	60413	19.25	100	0.136
	12	60415	19.84	100	0.154
	16	60417	21.72	100	0.195
<b>M5</b> 0.80 Pitch 3mm Hex	10	60419	19.25	100	0.218
	12	60421	19.73	100	0.245
	16	60423	21.72	100	0.290
	20	77115	24.48	100	0.44
	25	77118	27.25	100	0.55
	30	77121	29.24	100	0.61
<b>M6</b> 1.00 Pitch 4mm Hex	10	60431	19.96	100	0.295
	12	60433	20.67	100	0.334
	16	60435	22.66	100	0.408
	20	60437	24.07	100	0.476
	25	60439	27.47	100	0.562
	30	77124	30.02	100	0.648

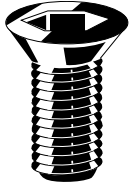
Diameter Thread Pitch Key Size	Length Under Head	Hex EDP No.	Price Per 100	Ct./Box	Weight Lb/Box
<b>M8</b> 1.25 Pitch 5mm Hex	10	77127	27.14	100	0.512
	12	60445	27.72	100	0.535
	16	60447	28.06	100	0.699
	20	60449	28.30	100	0.848
	25	60451	32.65	100	1.04
	30	60453	36.40	100	1.26
	35	77130	37.55	100	1.49
	40	77133	39.99	100	1.71
<b>M10</b> 1.50 Pitch 6mm Hex	16	77136	41.21	100	1.41
	20	60459	42.74	100	1.66
	25	60461	49.78	100	1.91
	30	60463	56.83	100	2.15
	35	77139	59.38	100	2.39
	40	77142	61.15	100	2.63
<b>M12</b> 1.75 Pitch 8mm Hex	16	77145	87.84	50	1.8
	20	77148	92.05	50	2.2
	25	77151	95.27	50	2.56
	30	77154	98.92	50	2.8
	35	77157	103.69	50	3.12
	40	77160	107.01	50	3.45
	50	77163	112.99	50	3.69

# Pricing and Product Information – Metric Sizes



Made in  
the U.S.A.

## Camcar® Socket Countersunk Flat Head Screws



### Product Description:

- Heat-treated alloy steel
- DFAR compliant

### Pricing Notes:

- Net price per 100
- Bulk pricing upon request

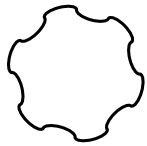
Diameter Thread Pitch Key Size	Length Under Head	Hex EDP No.	Price Per 100	Ct./Box	Weight Lb/Box
<b>M3</b> 0.50 Pitch 2mm Hex	6	77000	21.60	100	0.06
	8	60277	22.31	100	0.062
	10	60279	23.95	100	0.071
	12	60281	24.66	100	0.080
	16	60283	26.30	100	0.098
	20	77003	27.80	100	0.12
	25	77006	29.58	100	0.15
<b>M4</b> 0.70 Pitch 2.5mm Hex	8	60287	23.95	100	0.105
	10	60289	24.54	100	0.120
	12	60291	25.60	100	0.135
	16	60293	26.30	100	0.165
	20	77009	27.47	100	0.20
	25	77012	28.47	100	0.23
	30	77015	30.02	100	0.26
	35	77018	32.46	100	0.29
<b>M5</b> 0.80 Pitch 3mm Hex	40	77021	34.45	100	0.32
	8	77024	26.59	100	0.19
	10	60303	27.48	100	0.207
	12	60305	27.71	100	0.231
	16	60307	28.30	100	0.277
	20	60309	28.89	100	0.335
	25	60311	33.00	100	0.404
	30	77027	35.00	100	0.47
	35	77030	37.00	100	0.54
	40	77033	40.88	100	0.61
<b>M6</b> 1.00 Pitch 4mm Hex	50	77036	45.53	100	0.68
	8	77039	25.37	100	0.30
	10	77042	26.14	100	0.31
	12	60319	27.01	100	0.344
	16	60321	27.71	100	0.414
	20	60323	29.94	100	0.484
	25	60325	34.52	100	0.571
	30	60327	40.04	100	0.682
	35	60329	45.91	100	0.793
	40	77045	48.52	100	0.90
	45	77048	50.51	100	1.02
	50	77051	53.28	100	1.13

Diameter Thread Pitch Key Size	Length Under Head	Hex EDP No.	Price Per 100	Ct./Box	Weight Lb/Box
<b>M8</b> 1.25 Pitch 5mm Hex	10	77054	38.77	100	0.69
	12	77057	39.99	100	0.80
	16	60337	40.86	100	0.92
	20	60339	41.80	100	1.04
	25	60341	43.45	100	1.19
	30	60343	45.91	100	1.34
	35	60345	50.26	100	1.54
	40	60347	50.57	100	1.83
	45	77060	51.07	100	1.94
	50	77063	54.61	100	2.14
	60	77066	63.25	100	2.34
	70	77069	73.11	100	2.54
	<b>M10</b> 1.50 Pitch 6mm Hex	16	77072	49.96	100
20		60351	52.37	100	1.63
25		60353	52.84	100	1.88
30		60355	57.30	100	2.13
35		77075	60.48	100	2.38
40		77078	63.25	100	2.69
45		77082	67.46	100	3.00
50		77085	71.01	100	3.31
60		77088	79.76	100	3.62
70		77091	89.73	100	3.93
<b>M12</b> 1.75 Pitch 8mm Hex	20	77094	106.79	50	2.42
	25	77097	110.00	50	2.78
	30	77100	117.53	50	3.14
	35	77103	121.63	50	3.50
	40	77106	128.94	50	3.86

# Pricing and Product Information – Drive Tools



## TORX PLUS® Drive Tools



### Pricing Notes:

- All prices are net each



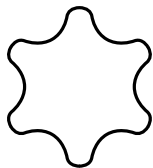
### TORX PLUS Insert Bits

Hex Shank	Size	Overall Length	EDP Number	<100	101-500	501-1000	Over 1000
1/4"	1IP	1	357-P0101-61	22.84	20.29	19.04	17.47
	2IP	1	357-P0201-61	21.76	19.33	18.13	16.64
	3IP	1	357-P0301-61	20.71	18.41	17.27	15.84
	4IP	1	357-P0401-61	13.60	12.43	11.84	10.94
	5IP	1	357-P0501-61	11.65	10.75	10.08	9.67
	6IP	1	357-P0601-61	10.24	8.90	8.29	8.15
	7IP	1	357-P0701-61	8.29	7.41	6.82	6.67
	8IP	1	357-P0801-61	8.29	7.41	6.82	6.67
	10IP	1	357-P1001-61	4.59	4.14	3.84	3.72
	15IP	1	357-P1501-61	4.59	4.14	3.84	3.72
	20IP	1	357-P2001-61	4.59	4.14	3.84	3.72
	25IP	1	357-P2501-61	4.59	4.14	3.84	3.72
	27IP	1	357-P2701-61	4.59	4.14	3.84	3.72
	30IP	1	357-P3001-61	4.59	4.14	3.84	3.72
	40IP	1	357-P4001-61	4.59	4.14	3.84	3.72
	5/16"	30IP	1-1/4	357-P3002-01	4.59	4.14	3.84
40IP		1-1/4	357-P4002-01	4.59	4.14	3.84	3.72
45IP		1-1/4	357-P4502-01	5.31	4.75	4.45	4.14
5/8"	50IP	1-1/2	357-P5002-41	82.37	79.69	67.99	64.58
	55IP	1-1/2	357-P5502-41	82.37	79.69	67.99	64.58
	60IP	1-1/2	357-P6002-41	82.37	79.69	67.99	64.58
	70IP	1-1/2	357-P7002-41	82.37	79.69	67.99	64.58
7/8"	80IP	2	357-P8003-21	106.62	103.57	100.77	87.73

### TORX PLUS Tamper-Resistant Insert Bits

Hex Shank	Size	Overall Length	EDP Number	Price Per Each
1/4"	10IPR	1	357-P1091-61	Call For Current Pricing & Availability
	15IPR	1	357-P1591-61	Call For Current Pricing & Availability
	20IPR	1	357-P2091-61	Call For Current Pricing & Availability
	25IPR	1	357-P2591-61	Call For Current Pricing & Availability
	27IPR	1	357-P2791-61	Call For Current Pricing & Availability
	30IPR	1	357-P3091-61	Call For Current Pricing & Availability
	40IPR	1	357-P4091-61	Call For Current Pricing & Availability
	45IPR	1	357-P4592-01	Call For Current Pricing & Availability

## TORX® Drive Tools

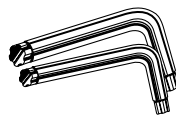


### Pricing Notes:

- All prices are net each

### TORX Short Arm Keys

TORX Size	EDP Number	Price Each
T-7	356-0007-01	4.63
T-8	356-0008-01	4.63
T-9	356-0009-01	4.63
T-10	356-0010-01	1.65
T-15	356-0015-01	1.65
T-20	356-0020-01	1.80
T-25	356-0025-01	1.95
T-27	356-0027-01	2.07
T-30	356-0030-01	2.56

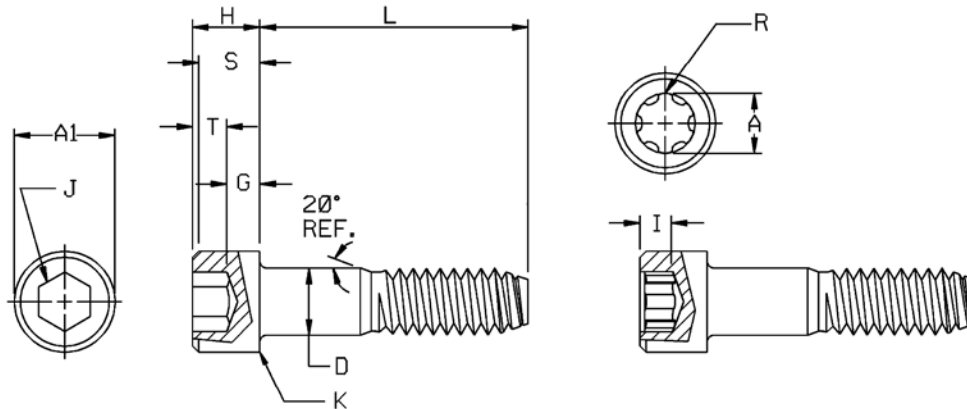


### TORX Drive System Interchangability Table

TORX Size	Socket Head Cap Screw	Button Head Cap Screw	Flat Head Cap Screw	Pressure Plug	Socket Set Screw
T-7					6
T-8		4			8
T-9					
T-10	4,5	6	4,5		10
T-15	6	8	6		1/4
T-20			8		
T-25	8	10	10		
T-27	10	1/4		1/16	5/16
T-30	1/4		1/4	1/8	3/8
T-40		5/16	5/16		
T-45	5/16	3/8	3/8	1/4	1/2
T-50	3/8		7/16, 1/2		
T-55	7/16, 1/2	1/2	5/8	3/8	
T-60	5/8	3/4			
T-70	5/8				
T-90	3/4				
T-100					

# Technical and Torque Data – Inch Sizes

## Camcar® Socket Head Cap Screws



**Dimensions of Hex and TORX PLUS® Drive Socket Head Cap Screws**

Nominal Size or Basic Screw Diameter	D Body Diameter		A1 Head Diameter		H Head Height		S Head Side Height Min.	R Drive Size	TORX PLUS		Hex Socket Size		T Hex Key Engag. Min.	G Wall Thick. Min.	K Chamfer or Radius Max.	
	Max.	Min.	Max.	Min.	Max.	Min.			Recess Dim. Ref.	Key Eng. Min.	Nom.	In.				
0	0.0600	0.0600	0.0568	0.096	0.091	0.060	0.057	0.054	6IP	0.069	0.027		0.050	0.025	0.020	0.003
1	0.0730	0.0730	0.0695	0.118	0.112	0.073	0.070	0.066	7IP	0.081	0.036	1/16	0.062	0.031	0.025	0.003
2	0.0860	0.0860	0.0822	0.140	0.134	0.086	0.083	0.077	8IP	0.094	0.037	5/64	0.078	0.038	0.029	0.003
3	0.0990	0.0990	0.0949	0.161	0.154	0.099	0.095	0.089	8IP	0.094	0.041	5/64	0.078	0.044	0.034	0.003
4	0.1120	0.1120	0.1075	0.183	0.176	0.112	0.108	0.101	10IP	0.111	0.049	3/32	0.094	0.051	0.038	0.005
5	0.1250	0.1250	0.1202	0.205	0.198	0.125	0.121	0.112	10IP	0.111	0.049	3/32	0.094	0.057	0.043	0.005
6	0.1380	0.1380	0.1329	0.226	0.218	0.138	0.134	0.124	15IP	0.132	0.058	7/64	0.109	0.064	0.047	0.005
8	0.1640	0.1640	0.1585	0.270	0.262	0.164	0.159	0.148	25IP	0.178	0.078	9/64	0.141	0.077	0.056	0.005
10	0.1900	0.1900	0.1840	0.312	0.303	0.190	0.185	0.171	27IP	0.200	0.088	5/32	0.156	0.090	0.065	0.005
1/4	0.2500	0.2500	0.2435	0.375	0.365	0.250	0.244	0.225	30IP	0.221	0.097	3/16	0.188	0.120	0.095	0.008
5/16	0.3125	0.3125	0.3053	0.469	0.457	0.312	0.306	0.281	45IP	0.312	0.137	1/4	0.250	0.151	0.119	0.008
3/8	0.3750	0.3750	0.3678	0.562	0.550	0.375	0.368	0.337	50IP	0.352	0.155	5/16	0.312	0.182	0.143	0.008
7/16	0.4375	0.4375	0.4294	0.656	0.642	0.438	0.430	0.394	55IP	0.446	0.202	3/8	0.375	0.213	0.166	0.010
1/2	0.5000	0.5000	0.4919	0.750	0.735	0.500	0.492	0.450	55IP	0.446	0.202	3/8	0.375	0.245	0.190	0.010
5/8	0.6250	0.6250	0.6163	0.938	0.921	0.625	0.616	0.562	70IP	0.619	0.291	1/2	0.500	0.307	0.238	0.010
3/4	0.7500	0.7500	0.7406	1.125	1.107	0.750	0.740	0.675	80IP	0.699	0.332	5/8	0.625	0.370	0.285	0.010
7/8	0.8750	0.8750	0.8467	1.312	1.293	0.875	0.864	0.787	100IP	0.882	0.425	3/4	0.750	0.432	0.333	0.015
1	1.0000	1.0000	0.9886	1.500	1.479	1.000	0.988	0.900	100IP	0.882	0.425	3/4	0.750	0.495	0.380	0.015
1-1/4	1.2500	1.2500	1.2336	1.875	1.852	1.250	1.236	1.125				7/8	0.875	0.620	0.475	0.015
1-1/2	1.5000	1.5000	1.4818	2.250	2.224	1.500	1.485	1.350				1	1.000	0.745	0.570	0.015

# Technical and Torque Data – Inch Sizes

## Camcar® Socket Head Cap Screws

### Mechanical Properties

Nominal Size	Tensile Strength	Yield Strength	Elongation* in 2"	Reduction of Area*	Hardness
	PSI Min.	PSI Min.	% Min.	% Min.	Rockwell C
0 to 1/2"	180,000	162,000	8%	35%	39 - 45
Over 1/2"	170,000	153,000	8%	35%	37 - 45

Nominal Size	Basic Screw Dia.	Tensile Stress Area		Tensile Strength (Lbs Min.)		Yield Strength (Lbs Min.)		Single Shear Strength* (Lbs Min.)
		UNRC	UNRF	UNRC	UNRF	UNRC	UNRF	Body Section
0	0.0600		0.00180		324		290	280
1	0.0730	0.00263	0.00278	473	500	425	450	420
2	0.0860	0.00370	0.00394	666	709	600	635	580
3	0.0990	0.00487	0.00523	877	941	790	845	770
4	0.1120	0.00604	0.00661	1,090	1,190	975	1,070	985
5	0.1250	0.00796	0.00830	1,430	1,490	1,290	1,345	1,225
6	0.1380	0.00909	0.01015	1,640	1,830	1,470	1,645	1,495
8	0.1640	0.01400	0.01474	2,520	2,650	2,270	2,385	2,110
10	0.1900	0.01750	0.02000	3,150	3,600	2,835	3,240	2,835
1/4	0.2500	0.03180	0.03640	5,725	6,500	5,150	5,900	4,910
5/16	0.3125	0.05240	0.05800	9,430	10,400	8,490	9,395	7,670
3/8	0.3750	0.07750	0.08780	13,950	15,800	12,555	14,225	11,045
7/16	0.4375	0.10630	0.11870	19,135	21,400	17,220	19,230	15,035
1/2	0.5000	0.14190	0.15990	25,540	28,800	22,990	25,905	19,635
5/8	0.6250	0.22600	0.25600	38,400	43,500	34,550	39,150	30,680
3/4	0.7500	0.33400	0.37300	56,750	63,400	51,100	57,050	44,180
7/8	0.8750	0.46200	0.50900	78,500	86,500	70,700	77,850	60,130
1	1.0000	0.60600	0.66300	103,000	113,000	92,700	101,450	78,540
1-1/4	1.2500	0.96900	1.07300	164,700	182,000	148,250	164,150	122,720
1-1/2	1.5000	1.40500	1.48100	238,800	269,000	214,950	241,900	176,710

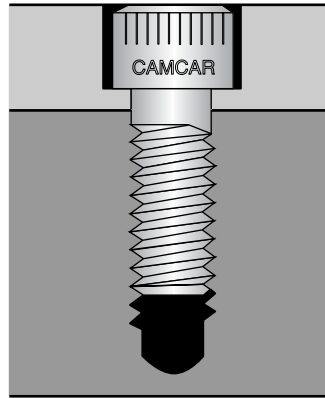
\* Calculated at 100 ksi shear strength



# Technical and Torque Data – Inch Sizes

## Camcar® Socket Head Cap Screws

This product is a high tensile strength fastener designed for use in applications where the material being clamped is of sufficient hardness (generally Rockwell B90/614 MPa ultimate tensile strength for steel and cast iron is adequate for the preload induced by the above seating torques; softer materials may require a washer under the head to prevent indentation). The application can be recessed with a counterbore where clearance for open and socket wrenches is a problem. Typical applications include use in a machine assembly, punch press tooling, bearing caps, split collars, etc.



### Applications Data

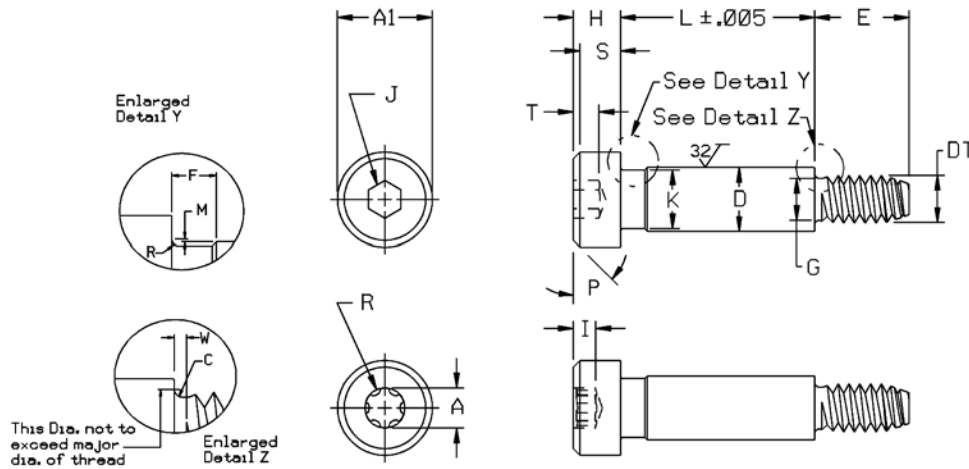
Nom. Size	Basic Screw Dia.	Tension Induced in Screws Torqued as Recommended (Lb.)		Suggested Seating Torque (In-Lb)	
		UNRC	UNRF	UNRC	UNRF
#0	0.0600		220		2.7
#1	0.0730	320	340	4.9	5.2
#2	0.0860	450	480	8.1	8.6
#3	0.0990	590	630	12.3	13.2
#4	0.1120	730	800	17.2	18.9
#5	0.1250	970	1,010	25.4	26.5
#6	0.1380	1,100	1,230	32.0	35.7
#8	0.1640	1,700	1,790	58.6	61.6
#10	0.1900	2,130	2,430	84.8	97.0
1/4"	0.2500	3,860	4,420	202.8	232.3
5/16"	0.3125	6,370	7,050	417.8	462.4
3/8"	0.3750	9,416	10,670	741.5	840.2
7/16"	0.4375	12,910	14,420	1,186.6	1,325.1
1/2"	0.5000	17,240	19,430	1,810.5	2,040.0
5/8"	0.6250	25,910	29,560	3,401.0	3,854.0
3/4"	0.7500	38,320	42,790	6,036.0	6,739.0
7/8"	0.8750	53,020	53,390	9,743.0	10,728.0
1"	1.0000	69,525	76,087	14,600.0	15,978.0
1-1/4"	1.2500	111,120	123,113	29,186.0	32,317.0
1-1/2"	1.5000	161,212	181,425	50,782.0	57,149.0

### Notes for Socket Head Cap Screws – Inch

- (1) Nominal Size: Where specifying nominal size in decimals, zeros preceding decimal and in the fourth decimal place shall be omitted.
- (2) Body: The term body refers to the unthreaded portion of the shank for screws not threaded to the head.
- (3) Head Diameter: Heads may be plain or knurled at the option of the manufacturer, unless specified by the customer. For knurled screws, the maximum head diameter shall be measured across the tops of the knurl and the minimum head diameter shall be the diameter of the unknurled portion, or the diameter across the tops of the knurls for those screws not having an unknurled portion, just above the radius or chamfer at the bottom edge of the head.
- (4) Head Chamfer: The head shall be chamfered at an angle with the plane of the top of the head. The edge between the top of the head and the chamfer may be slightly rounded.
- (5) Bearing Surface: The plane of the bearing surface shall be perpendicular to the axis of the screw within a maximum deviation of 1°.
- (6) Edge of Head: The edge between the bearing surface and the side of the head may be broken (rounded or chamfered) but the radius or chamfer measured along the bearing surface shall not exceed the values listed for "K".
- (7) Mechanical Properties: The mechanical properties included in the above charts are based on testing that was performed at normal room temperatures. When application environment temperatures fall dramatically below or are substantially higher than room temperature, certain variables need to be taken into consideration. If temperatures exceed 400 °F (204 °C), short time tensile, creep and relaxation need to be evaluated. When application temperatures drop below -20 °F (-29 °C), lower ductility, impact strength and fatigue life should be taken into account.
- (8) Material: Camcar Socket Head Cap Screws shall be fabricated from an alloy steel having one or more of the following alloying elements: chromium, nickel, molybdenum or vanadium, in sufficient quantity to assure that the specified hardness range of Rockwell C39-45 for sizes #0 to 1/2" and C37-45 for sizes over 1/2" is achieved. Decarburization and carburization limits shall be the same as those specified for Socket Head Cap Screws in ASTM Specification A574, Alloy Steel Socket Head Cap Screws.

# Technical and Torque Data – Inch Sizes

## Camcar® Socket Shoulder Screws



### Dimensions of Hex and TORX PLUS® Socket Shoulder Screws

Nom. Shoulder Dia.	D Shoulder Dia.		A1 Head Dia.		H Head Height		S Head Side Height	R TORX PLUS			J Hex Socket Size Nom.	T Hex Key Eng.	M Head Fillet Extended Above D	R Head Fillets Radius		
	Max.	Min.	Max.	Min.	Max.	Min.	Min.	Drive Size	Recess Dim. Ref.	Key Eng. Min.	Min.	Max.	Min.			
1/4	0.2500	0.2480	0.2460	0.375	0.357	0.188	0.177	0.157	20IP	0.155	0.068	1/8	0.125	0.094	0.014	0.009
5/16	0.3125	0.3105	0.3085	0.438	0.419	0.219	0.209	0.183	27IP	0.200	0.088	5/32	0.156	0.117	0.017	0.012
3/8	0.3750	0.3730	0.3710	0.562	0.543	0.250	0.240	0.209	40IP	0.266	0.117	3/16	0.188	0.141	0.020	0.015
1/2	0.5000	0.4980	0.4960	0.750	0.729	0.312	0.302	0.262	45IP	0.312	0.137	1/4	0.250	0.188	0.026	0.020
5/8	0.6250	0.6230	0.6210	0.875	0.853	0.375	0.365	0.315	55IP	0.446	0.196	5/16	0.312	0.234	0.032	0.024
3/4	0.7500	0.7480	0.7460	1.000	0.977	0.500	0.490	0.421	60IP	0.529	0.245	3/8	0.375	0.281	0.039	0.030

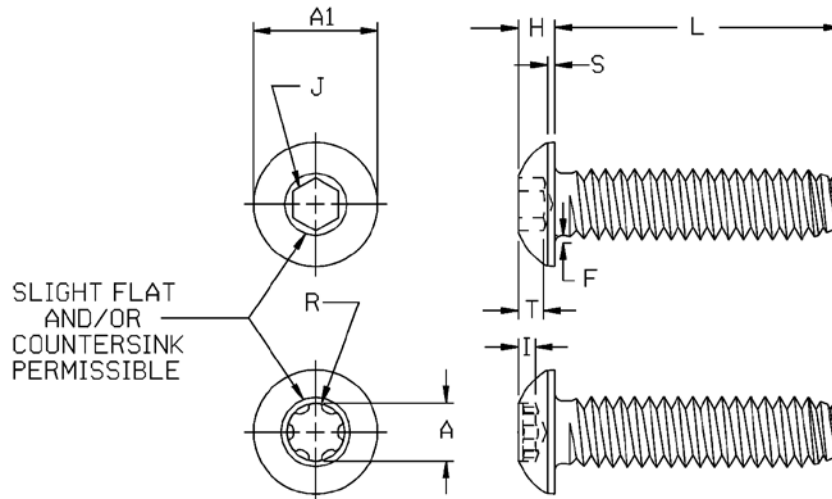
Nom. Shoulder Dia.	K Shoulder Neck Dia.	F Neck Width	DT Nominal Thread Size or Basic Dia.		TPI	G Threaded Neck Dia.		W Thread Neck Width	C Threaded Neck Fillet		E Threaded Length	
	Max.	Max.	Max.	Min.		Max.	Min.	Max.	Max.	Min.	Basic	
1/4	0.2500	0.227	0.093	10	0.1900	24	0.142	0.133	0.083	0.023	0.017	0.375
5/16	0.3125	0.289	0.093	1/4	0.2500	20	0.193	0.182	0.100	0.028	0.022	0.438
3/8	0.3750	0.352	0.093	5/16	0.3125	18	0.249	0.237	0.111	0.031	0.025	0.500
1/2	0.5000	0.477	0.093	3/8	0.3750	16	0.304	0.291	0.125	0.035	0.029	0.625
5/8	0.6250	0.602	0.093	1/2	0.5000	13	0.414	0.397	0.154	0.042	0.036	0.750
3/4	0.7500	0.727	0.093	5/8	0.6250	11	0.521	0.502	0.182	0.051	0.045	0.875

Nominal or Basic Shoulder Diameter	Mechanical Properties			Application Data	
	Tensile Strength	Shear Strength		Suggested Seating Torque*	
		Thread Neck Area	Shoulder Area		Thread Neck Area
	Lb. Min.	Lb. Min.	Lb. Min.		Lb./In.
1/4	0.2500	1,950	8,246		1,167
5/16	0.3125	3,640	12,885	2,185	89
3/8	0.3750	6,170	18,555	3,706	188
1/2	0.5000	9,310	32,986	5,587	340
5/8	0.6250	17,300	51,541	10,398	845
3/4	0.7500	27,700	74,220	16,625	1,688

Socket head shoulder screws are designed and recommended for use with stripper springs and guides in punch press die sets. They can also be used for attaching cams, rollers, links and levers, as stationary guides and as pressure pads.

# Technical and Torque Data – Inch Sizes

## Camcar® Button Head Cap Screws



### Dimensions of Hex and TORX PLUS® Drive Socket Button Head Cap Screws

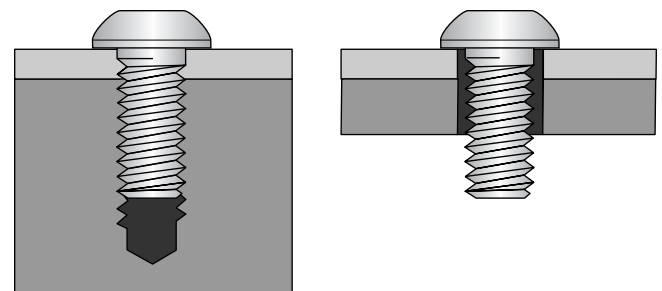
Nominal Size or Basic Screw Diameter	A1 Head Dia.		H Head Height		S Head Side Height	TORX PLUS			J Hexagon Socket Size		T Hex Head Key Engmt.	F Ext. Fillet Above D		L Max. Length	
						R	A	I							
						Drive Size	Recess Dim.	Key Engmt.							
Max.	Min.	Max.	Min.	Ref.	Ref.	Min.	Nom.	In.	Min.	Max.	Min.	Nom.			
0	0.0600	0.114	0.104	0.032	0.026	0.010				0.035	0.020	0.010	0.005	1/2	
2	0.0860	0.164	0.154	0.046	0.038	0.010	6IP	.069	0.023		0.050	0.028	0.010	0.005	1/2
4	0.1120	0.213	0.201	0.059	0.051	0.015	8IP	.094	0.032	1/16	0.062	0.035	0.010	0.005	1/2
6	0.1380	0.262	0.250	0.073	0.063	0.015	10IP	.111	0.038	5/64	0.078	0.044	0.010	0.005	5/8
8	0.1640	0.312	0.298	0.087	0.077	0.015	15IP	.132	0.045	3/32	0.094	0.052	0.015	0.010	3/4
10	0.1900	0.361	0.347	0.101	0.091	0.020	25IP	.178	0.052	1/8	0.125	0.070	0.015	0.010	1
1/4	0.2500	0.437	0.419	0.132	0.122	0.031	27IP	.200	0.068	5/32	0.156	0.087	0.020	0.015	1
5/16	0.3125	0.547	0.527	0.166	0.152	0.031	40IP	.266	0.090	3/16	0.188	0.105	0.020	0.015	1
3/8	0.3750	0.656	0.636	0.199	0.185	0.031	45IP	.312	0.106	7/32	0.219	0.122	0.020	0.015	1-1/4
1/2	0.5000	0.875	0.851	0.265	0.245	0.046	55IP	.446	0.158	5/16	0.312	0.175	0.030	0.020	2
5/8	0.6250	1.000	0.970	0.331	0.311	0.062	60IP	.529	0.192	3/8	0.375	0.210	0.030	0.020	2

### Mechanical and Application Data

Nominal Tensile Size or Basic Screw Diameter	Single Shear*		Suggested Seating Torque** lb./in.		
	Strength (lb.) Min. UNRC/UNRF	Strength (lb.) Body Section	UNRC Plain Finish	UNRF Plain Finish	
0	0.060	260	282	1	1
2	0.086	540	580	3	3
4	0.112	840	985	7	8
6	0.138	1,260	1,495	13	14
8	0.164	1,940	2,110	23	24
10	0.190	2,440	2,835	34	38
1/4	0.250	4,430	4,910	80	92
5/16	0.3125	7,300	7,670	165	182
3/8	0.375	10,880	11,045	293	332
1/2	0.500	19,800	19,633	715	806
5/8	0.625	31,500	30,680	1,425	1,610

\* Some shear values derived by calculation.

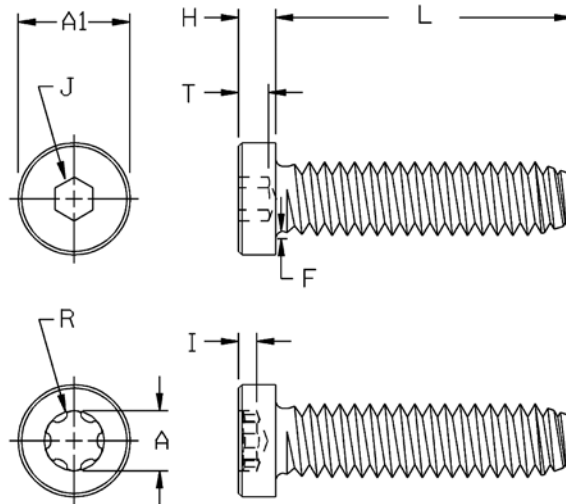
\*\* Seating torques calculated to induce 48,000 psi tensile stress with a "K" factor of .21.



This product is designed and recommended for applications where a low profile socket head screw is desired. Wrenchability is limited by the socket size and key engagement. Because of the head configuration, this product is not recommended for use in high-strength applications or where maximum fatigue resistance is required.

# Technical and Torque Data – Inch Sizes

## Camcar® Low Head Cap Screws



### Dimensions of Hex and TORX PLUS® Socket Low Head Cap Screws

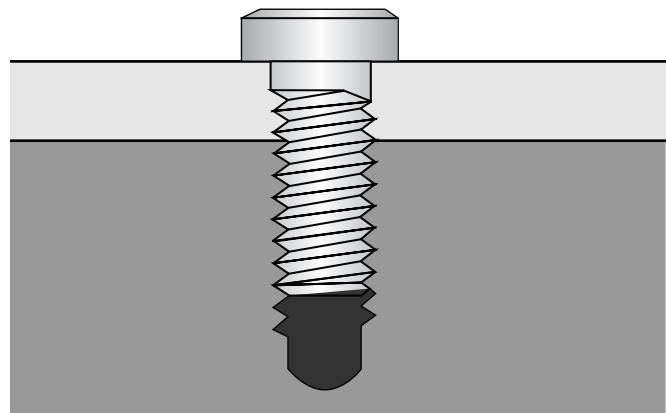
Nominal Size	A1 Head Diameter		H Head Height		R	A	I	J Hex Socket Size		T Hex Key Engmt.	F Fillet Extension		
	Max.	Min.	Max.	Min.	Drive Size	TORX PLUS		Nom.	In.	Min.	Max.	Min.	
						Recess Dim. Ref.	Key Engmt. Min.						
8	0.1640	0.270	.265	.082	.079	15IP	.132	.045	5/64	.0781	.060	.012	.007
10	0.1900	0.312	.307	.095	.092	20IP	.155	.053	3/32	.0938	.072	.014	.009
1/4	0.2500	0.375	.369	.125	.121	27IP	.200	.068	1/8	.1250	.094	.014	.009
5/16	0.3125	0.437	.431	.156	.152	30IP	.221	.075	5/32	.1562	.120	.017	.012
3/8	0.3750	0.562	.556	.187	.182	40IP	.266	.090	3/16	.1875	.145	.020	.015
1/2	0.5000	0.750	.743	.250	.244	50IP	.352	.120	1/4	.2500	.184	.026	.020

### Mechanical & Applications Data

Nominal Size or Basic Screw Diameter	Tensile Strength lb. Min.		Single Shear* Strength (lb.) Thru Body Section	Suggested Seating Torque** (lb./in.)		
	UNRC	UNRF		UNRC	UNRF	
8	0.164	2,380	2,510	2,110	23	24
10	0.190	2,980	3,400	2,835	34	38
1/4	0.250	5,400	6,100	4,910	80	92
5/16	0.3125	8,900	9,800	7,670	165	182
3/8	0.375	13,100	14,900	11,045	293	332
1/2	0.500	24,100	27,100	19,635	715	806

\* Some shear values are derived by calculation.

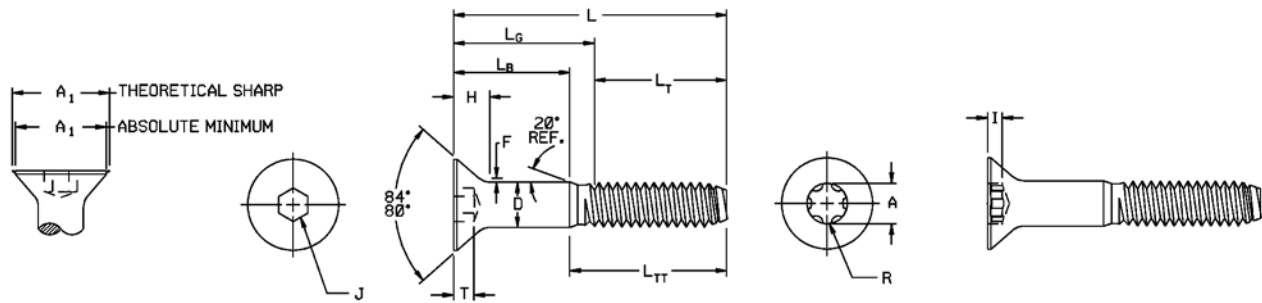
\*\* Seating torques calculated to induce 48,000 psi tensile stress with a "K" factor of .26.



Socket low head cap screws are precision fasteners designed for applications where head height clearance is a problem. Because of their reduced head height and smaller socket size, they normally **can not be preloaded as high** as standard socket head cap screws and should not be subjected to high tensile loads.

# Technical and Torque Data – Inch Sizes

## Camcar® Countersunk Flat Head Cap Screws



### Dimensions of Hex and TORX PLUS® Flat Countersunk Head Cap Screws

Nominal Size or Basic Screw Dia.	D		A1 Head Dia.		H Head Height		R	A	I	J Hex Socket Size		T Hex Key Engmt. Min.	F Ext. Fillet Above D Max.	
							TORX PLUS			Nom.	In.			
	Body Dia. Max.	Theor. Sharp Min.	Abs. Min.	Abs. Max.	Min.	Flush. Tol.	Drive Size	Recess Dim. Ref.	Key Engmt. Min.					
4	0.1120	0.1120	0.1075	0.255	0.218	0.083	0.011	10IP	.111	.038	1/16	0.062	0.055	0.012
5	0.1250	0.1250	0.1202	0.281	0.240	0.090	0.012	10IP	.111	.038	5/64	0.078	0.061	0.014
6	0.1380	0.1380	0.1329	0.307	0.263	0.097	0.013	15IP	.132	.045	5/64	0.078	0.066	0.015
8	0.1640	0.1640	0.1585	0.359	0.311	0.112	0.014	20IP	.155	.053	3/32	0.094	0.076	0.015
10	0.1900	0.1900	0.1840	0.411	0.359	0.127	0.015	25IP	.178	.061	1/8	0.125	0.087	0.015
1/4	0.2500	0.2500	0.2435	0.531	0.480	0.161	0.016	30IP	.221	.075	5/32	0.156	0.111	0.015
5/16	0.3125	0.3125	0.3053	0.656	0.600	0.198	0.017	40IP	.266	.090	3/16	0.188	0.135	0.015
3/8	0.3750	0.3750	0.3678	0.781	0.720	0.234	0.018	45IP	.312	.106	7/32	0.219	0.159	0.015
7/16	0.4375	0.4375	0.4294	0.844	0.781	0.234	0.018	50IP	.352	.120	1/4	0.250	0.159	0.015
1/2	0.5000	0.5000	0.4919	0.938	0.872	0.251	0.018	50IP	.352	.120	5/16	0.312	0.172	0.015
5/8	0.6250	0.6250	0.6163	1.188	1.112	0.324	0.022	55IP	.446	.158	3/8	0.375	0.220	0.015
3/4	0.7500	0.7500	0.7406	1.438	1.355	0.396	0.024	60IP	.529	.192	1/2	0.500	0.220	0.015

### Mechanical & Application Data

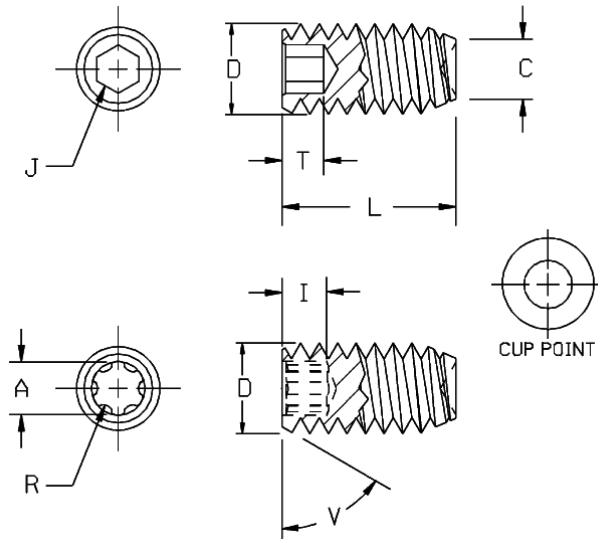
Nom. Size	Basic Screw Diameter	Tensile Strength (lbs) Min. UNRC/UNRF	Single Shear Strength* (lbs)			Suggested Seating Torque** (lb./in.)	
			Body Section	Thread Section		UNRC Plain Finish	UNRF Plain Finish
				UNRC	UNRF		
4	0.1120	900	950	630	690	8.4	9.2
5	0.1250	1,185	1,190	830	870	12.0	13.0
6	0.1380	1,350	1,460	950	1,060	16.0	18.0
8	0.164	2,085	2,070	1,470	1,550	29.0	30.0
10	0.1900	2,610	2,790	1,840	2,100	42.0	47.0
1/4	0.2500	4,750	4,900	3,340	3,830	99.0	114.0
5/16	0.3125	7,800	7,700	5,500	6,100	204.0	226.0
3/8	0.3750	11,600	11,100	8,100	9,200	363.0	411.0
7/16	0.4375	15,900	15,200	11,100	12,400	580.0	648.0
1/2	0.5000	21,200	20,000	14,900	16,800	885.0	998.0
5/8	0.6250	33,800	31,400	23,700	26,900	1,763.0	1,997.0
3/4	0.7500	50,000	45,300	35,100	39,200	3,126.0	3,491.0

\* Some shear values are derived by calculation.

\*\* Seating torques calculated to induce 48,000 psi tensile stress with a "K" factor of .26.

# Technical and Torque Data – Inch Sizes

## Camcar® Socket Set Screws



### Mechanical & Application Data

Nominal Screw Size	Suggested Seating Torque*	Axial Holding Power (lbs)
2	0.0860	1.6
3	0.0990	4.8
4	0.1120	4.8
5	0.1250	8.9
6	0.203	8.9
8	0.164	17.9
10	0.1900	31.4
1/4	0.2500	73.0
5/16	0.3125	144.0
3/8	0.3750	251.0
7/16	0.4375	361.0
1/2	0.5000	536.0
5/8	0.6250	1,063.0
3/4	0.7500	1,828.0
7/8	0.8750	4,335.0
1	1.0000	5,865.0

\* Calculated to reach 85% of minimum key strength.

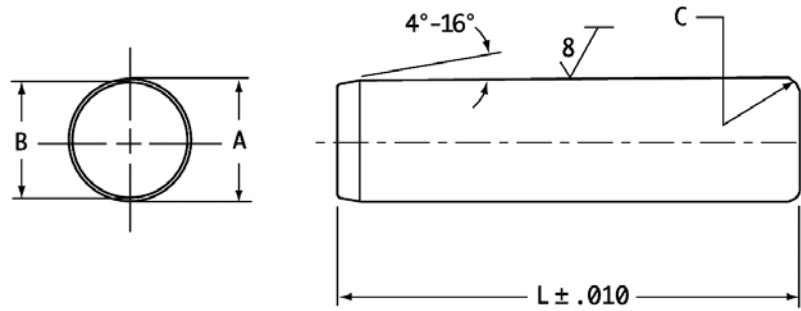
NOTE: Set screws must have minimum recess depth shown above to generate full recess strength. The axial holding power data in the table above is for cup point set screws and is provided for reference only, as actual holding power may vary by +25%. It is recommended that laboratory testing of your set screw application be performed to verify results.

### Dimensions of Hex and TORX PLUS® Socket Set Screws

D			R	A	I	J		T	B	C	
Nom. Size	Thread Series	Basic Screw Dia.	TORX PLUS Drive			Hex Socket Size		Min. Key Eng. To Develop Functional Capability of Key Hex Socket	Shortest Opt. Nom. Length To Which "T" Applies Cup and Flat Pts.	Cup and Flat Dia.	
			Rec Size	Rec. Dia. Ref.	Min. Eng.	Nom Size.	In.			Max.	Min.
#2	UNC	.086					.035	.060	.13	.047	.039
#3	UNC	.099					.050	.070	.19		
#4	UNC/UNF	.112	6IP	.069	.027		.050	.070	.19	.061	.051
#5	UNC/UNF	.125	7IP	.081	.036	1/16"	.062	.080	.19	.067	.057
#6	UNC	.138	6IP	.069	.027	1/16"	.062	.080	.19	.074	.064
#6	UNF	.138	7IP	.081	.036	1/16"	.062	.080	.19	.074	.064
#8	UNC	.164	8IP	.094	.041	5/64"	.078	.090	.19	.087	.076
#10	UNC	.190	10IP	.111	.049	3/32"	.094	.100	.25	.102	.088
1/4"	UNC	.250	15IP	.132	.067	1/8"	.125	.125	.31	.132	.118
1/4"	UNF	.250	20IP	.155	.079	1/8"	.125	.125	.38	.132	.118
5/16"	UNC	.313	25IP	.200	.088	5/32"	.156	.156	.31	.172	.156
5/16"	UNF	.313	27IP	.200	.088	5/32"	.156	.156	.31	.172	.156
3/8"	UNC	.375	27IP	.221	.097	3/16"	.188	.188	.38	.212	.194
3/8"	UNF	.375	30IP	.221	.097	3/16"	.188	.188	.38	.212	.194
7/16"	UNC/UNF	.438	40IP	.266	.117	7/32"	.219	.219	.44	.291	.270
1/2"	UNC/UNF	.500	45IP	.312	.137	1/4"	.250	.250	.50		
5/8"	UNC/UNF	.625	55IP	.446	.202	5/16"	.312	.312	.63	.371	.340
3/4"	UNC	.750	60IP	.529	0.245	3/8"	.375	.375	.75		
7/8"	UNC	.875	70IP	.619	0.291	1/2"	.500	.500	.88		
1"	UNC	1.000	70IP	.619	0.291	9/16"	.562	.562	1.00		

# Technical and Torque Data – Inch Sizes

## Camcar® Hardened Ground Machine Dowel Pins

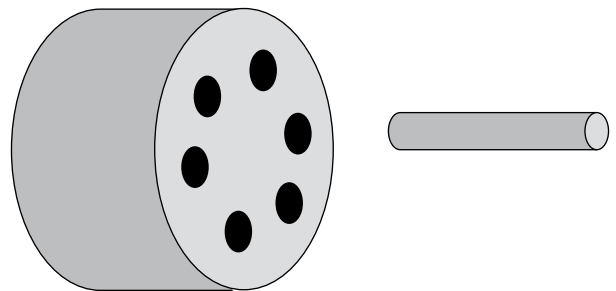


### Dimensions of Hardened Ground Machined Dowel Pins

Nom Size or Pin Diameter		A Pin Diameter						B Point Diameter		C Crown Height or Radius	
		Standard Series Pins			Oversize Series Pins						
Nom.	In.	Basic	Max.	Min.	Basic	Max.	Min.	Max.	Min.	Max.	Min.
1/16	0.0625	0.0627	0.0628	0.0626	0.0635	0.0636	0.0634	0.058	0.048	0.020	0.008
3/32	0.0938	0.0940	0.0941	0.0939	0.0948	0.0949	0.0947	0.089	0.079	0.031	0.012
1/8	0.1250	0.1252	0.1253	0.1251	0.1260	0.1261	0.1259	0.120	0.110	0.041	0.016
3/16	0.1875	0.1877	0.1878	0.1876	0.1885	0.1886	0.1884	0.180	0.170	0.062	0.023
1/4	0.2500	0.2502	0.2503	0.2501	0.2510	0.2511	0.2509	0.240	0.230	0.083	0.031
5/16	0.3125	0.3127	0.3128	0.3126	0.3135	0.3136	0.3134	0.302	0.290	0.104	0.039
3/8	0.3750	0.3752	0.3753	0.3751	0.3760	0.3761	0.3759	0.365	0.350	0.125	0.047
7/16	0.4375	0.4377	0.4378	0.4376	0.4385	0.4386	0.4384	0.424	0.409	0.146	0.055
1/2	0.5000	0.5002	0.5003	0.5001	0.5010	0.5011	0.5009	0.486	0.471	0.167	0.063
5/8	0.6250	0.6252	0.6253	0.6251	0.6260	0.6261	0.6259	0.611	0.595	0.208	0.078
3/4	0.7500	0.7502	0.7503	0.7501	0.7510	0.7511	0.7509	0.735	0.715	0.250	0.094
7/8	0.8750	0.8752	0.8753	0.8751	0.8760	0.8761	0.8759	0.860	0.840	0.293	0.109
1	1.0000	1.0002	1.0003	1.0001	1.0010	1.0011	1.0009	0.980	0.960	0.333	0.125

### Mechanical & Application Data

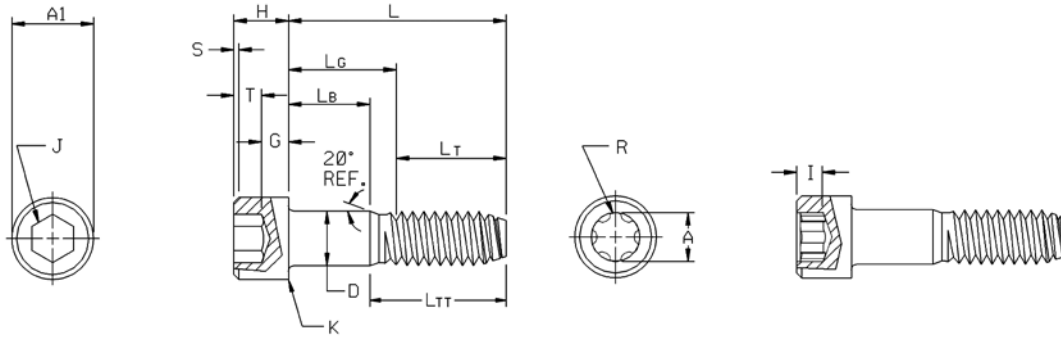
Nominal Pin Size	Suggested Hole Dia. for Standard Series Pins		Double Shear Load Lb.
	Max.	Min.	Min.
1/16	0.0625	0.0620	800
5/64	0.0781	0.0776	1,240
3/32	0.0937	0.0932	1,800
1/8	0.1250	0.1245	3,200
5/32	0.1562	0.1557	5,000
3/16	0.1875	0.1870	7,200
1/4	0.2500	0.2495	12,800
5/16	0.3125	0.3120	20,000
3/8	0.3750	0.3745	28,700
7/16	0.4375	0.4370	39,100
1/2	0.5000	0.4995	51,000
5/8	0.6250	0.6245	79,800
3/4	0.7500	0.7495	114,000
7/8	0.8750	0.8745	156,000
1	1.0000	0.9995	204,000



Hardened ground machine dowel pins are intended for applications where precise locating of mating parts is essential, such as, for doweling hardened tool and machine components or to serve as stops, guides and load bearing pins, etc., where strength shock or wear factors necessitate a hardened pin.

# Technical and Torque Data – Metric Sizes

## Camcar® Socket Head Cap Screws



### Dimensions of Hex and TORX PLUS® Metric Socket Head Cap Screws

Nominal Size x Thread Pitch	D Body Dia.		A1 Head Dia.		H Head Height		S Head Side Height Min.	R	A	I	J Hex Socket Size Nom.	T Key Engmt. Min.	G Wall Thick. Min.	Chamfer or Radius Max.
	Max.	Min.	Max.	Min.	Max.	Min.		TORX PLUS						
								Drive Size	Recess Dim. Ref.	Key Engmt. Min.				
M1.6 x 0.35	1.60	1.46	3.00	2.87	1.60	1.52	0.16				1.5	0.80	0.54	0.08
M2 x 0.4	2.00	1.86	3.80	3.65	2.00	1.91	0.20	6IP	1.75	0.77	1.5	1.00	0.68	0.08
M2.5 x 0.45	2.50	2.36	4.50	4.33	2.50	2.40	0.25	8IP	2.39	1.05	2.0	1.25	0.85	0.08
M3 x 0.5	3.00	2.86	5.50	5.32	3.00	2.89	0.30	10IP	2.82	1.24	2.5	1.50	1.02	0.13
M4 x 0.7	4.00	3.82	7.00	6.80	4.00	3.88	0.40	25IP	4.52	1.76	3.0	2.00	1.52	0.13
M5 x 0.8	5.00	4.82	8.50	8.27	5.00	4.86	0.50	27IP	5.08	2.24	4.0	2.50	1.90	0.13
M6 x 1	6.00	5.82	10.00	9.74	6.00	5.85	0.60	30IP	5.61	2.47	5.0	3.00	2.28	0.20
M8 x 1.25	8.00	7.78	13.00	12.70	8.00	7.83	0.80	45IP	7.92	3.48	6.0	4.00	3.20	0.20
M10 x 1.5	10.00	9.78	16.00	15.67	10.00	9.81	1.00	50IP	8.94	3.93	8.0	5.00	4.00	0.20
M12 x 1.75	12.00	11.73	18.00	17.63	12.00	11.79	1.20	55IP	11.33	5.15	10.0	6.00	4.80	0.25
M16 x 2	16.00	15.73	24.00	23.58	16.00	15.76	1.60	70IP	15.72	7.39	14.0	8.00	6.40	0.25
M20 x 2.5	20.00	19.67	30.00	29.53	20.00	19.73	2.00	90IP	20.19	9.67	17.0	10.00	8.00	0.40
M24 x 3	24.00	23.67	36.00	35.48	24.00	23.70	2.40	100IP	22.10	10.79	19.0	12.00	9.60	0.40

### Mechanical and Application Data

Nominal Size x Thread Pitch	Tensile Strength Min.		Single Shear* Body Section		Suggested Seating Torque** Plain Finish	
	Kn	Lb	Kn	Lb	Nm	Lb-In
M3 x 0.5	6.14	1,380	4.9	1,095	2.6	23
M4 x 0.7	10.7	2,410	8.7	1,947	6.1	54
M5 x 0.8	17.3	3,890	13.5	3,043	12.39	109
M6 x 1	24.5	5,510	19.5	4,382	20.9	185
M8 x 1.25	44.6	10,030	34.6	7,791	50.8	450
M10 x 1.5	70.8	15,920	54.1	12,173	100.8	892
M12 x 1.75	103.0	23,150	78.0	17,530	175.9	1,554
M16 x 2	192.0	43,160	138.6	31,164	437.0	3,964
M20 x 2.5	299.0	67,220	217.0	48,695	851.0	7,536
M24 x 3	431.0	96,890	312.0	70,120	1,471.0	13,026

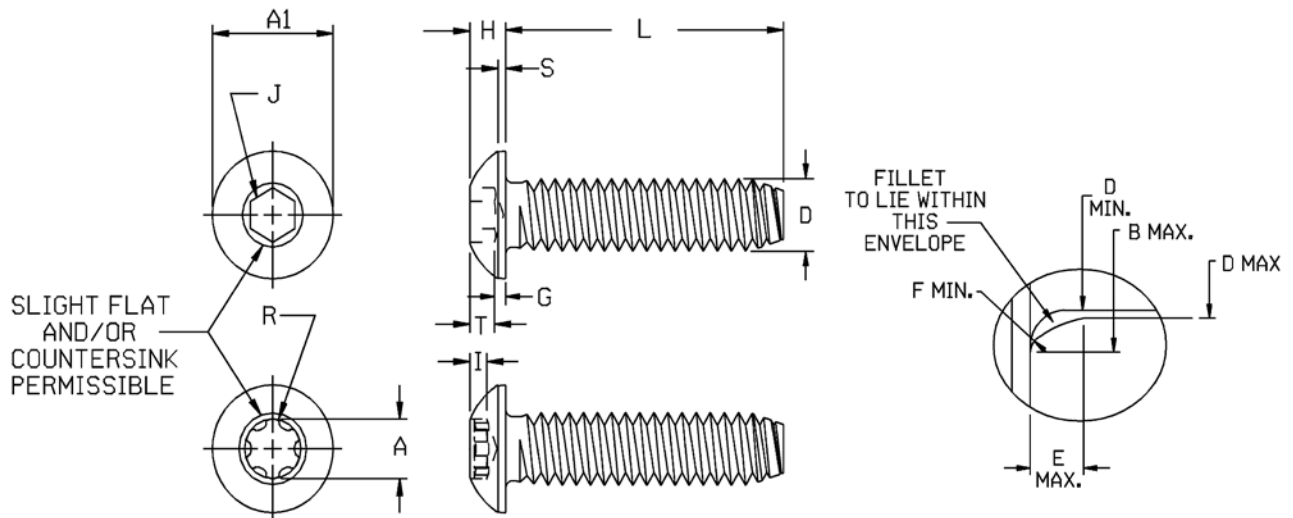
\* Based on 100 ksi shear strength

\*\* Seating torques calculated to induce 65,000 psi tensile stress with a "K" factor of 0.21.



# Technical and Torque Data – Metric Sizes

## Camcar® Button Head Cap Screws



### Dimensions of Hex and TORX PLUS® Metric Button Head Cap Screws

D Nom. Size x Thread Pitch	A1 Head Diameter		H Head Height		S Side Height Ref.	TORX PLUS			J Hex Socket Size Nom.	T Hex Key Eng. Min.	G Wall Thick- ness Min.	B Transition		E Underhead Juncture Max.	F Fillet Std. Radius Min.	L Max. Length Nom.
	Max.	Min.	Max.	Min.		Drive Size	Recess Dia. Ref.	Key Eng. Min.				Dia.	Len.			
												Max.	Min.			
M3 x 0.5	5.70	5.40	1.65	1.43	0.38	8IP	2.39	0.81	2	1.04	0.20	3.6	3.2	0.51	0.10	12
M4 x 0.7	7.60	7.24	2.20	1.95	0.38	15IP	3.35	1.14	2.5	1.30	0.30	4.7	4.4	0.60	0.20	20
M5 x 0.8	9.50	9.14	2.75	2.50	0.50	25IP	4.52	1.54	3	1.56	0.38	5.7	5.4	0.60	0.20	30
M6 x 1	10.50	10.07	3.30	3.00	0.80	27IP	5.08	1.73	4	2.08	0.74	6.8	6.5	0.68	0.25	30
M8 x 1.25	14.00	13.57	4.40	4.05	0.80	40IP	6.76	2.30	5	2.60	1.05	9.2	8.8	1.02	0.40	40
M10 x 1.5	17.50	17.07	5.50	5.20	0.80	45IP	7.92	2.69	6	3.12	1.45	11.2	10.8	1.02	0.40	40
M12 x 1.75	21.00	20.48	6.60	6.24	0.80	55IP	11.33	4.02	8	4.16	1.63	14.2	13.2	1.87	0.60	60

### Mechanical and Application Data

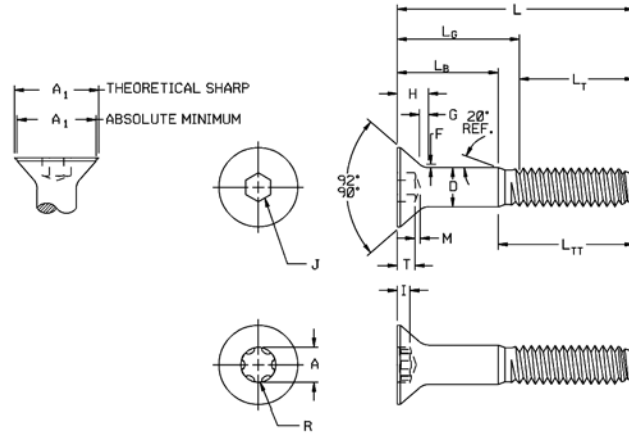
Nominal Size x Thread Pitch	Tensile Strength Min.		Single Shear* Body Section		Suggested Seating Torque** Plain Finish	
	Kn	Lb	Kn	Lb	Nm	Lb-In
M3 x 0.5	4.93	1,108.3	4.9	1,095	1.4	12.5
M4 x 0.7	8.60	1,933.4	8.7	1,947	3.3	29.0
M5 x 0.8	13.90	3,124.8	13.5	3,043	6.7	59.0
M6 x 1	19.70	4,428.7	19.5	4,382	11.3	100.0
M8 x 1.25	35.90	8,070.6	34.6	7,781	27.5	244.0
M10 x 1.5	56.80	12,769.0	54.1	12,173	54.6	483.0
M12 x 1.75	82.60	18,569.0	78.0	17,530	95.1	842.0

\* Based on 100 ksi shear strength

\*\* Seating torques calculated to induce 65,000 psi tensile stress with a "K" factor of 0.21.

# Technical and Torque Data – Metric Sizes

## Camcar® Flat Countersunk Head Cap Screws



### Dimensions of Hex and TORX PLUS® Metric Flat Countersunk Head Cap Screws

Nominal Size x Thread Pitch	D Body Diameter		A1 Head Dia.		H Head Height		R	A	I	J Hex Socket Size Min.	T Hex Key Engmt. Min.	G Wall Thickness Max.	F Fillet Extension Above D Max.	M Drill Allow.
	Max.	Min.	Theoretical Sharp	Absol. Min.	Ref.	Flush Tol.	TORX PLUS							
							Drive Size Ref.	Recess Dim. Min.	Key Engmt. Nom.					
M3 x 0.5	3.00	2.86	6.72	5.35	1.86	0.30	10IP	2.82	0.96	2.0	1.1	0.25	0.25	0.3
M3 x 0.5	3.00	2.86	6.72	5.35	1.86	0.30	10IP	2.82	0.96	2.0	1.1	0.25	0.25	0.3
M4 x 0.7	4.00	3.82	8.96	7.80	2.48	0.30	20IP	3.94	1.34	2.5	1.5	0.45	0.35	0.4
M5 x 0.8	5.00	4.82	11.20	9.75	3.10	0.35	25IP	4.52	1.54	3.0	1.9	0.66	0.40	0.5
M6 x 1	6.00	5.82	13.44	11.70	3.72	0.35	30IP	5.61	1.91	4.0	2.2	0.70	0.50	0.6
M8 x 1.25	8.00	7.78	17.92	15.60	4.96	0.40	40IP	6.76	2.30	5.0	3.0	1.16	0.60	0.8
M10 x 1.5	10.00	9.78	22.40	19.50	6.20	0.50	50IP	8.94	3.04	6.0	3.6	1.62	0.80	0.9

### Mechanical and Application Data

Nominal Size x Thread Pitch	Tensile Strength Min.		Single Shear* Body Section		Suggested Seating Torque** Plain Finish	
	Kn	Lb	Kn	Lb	Nm	Lb-In
M3 x 0.5	4.93	1,108.3	4.9	1,095	1.7	15.5
M4 x 0.7	8.60	1,933.4	8.7	1,947	4.1	36.0
M5 x 0.8	13.90	3,124.8	13.5	3,043	8.2	73.0
M6 x 1	19.70	4,428.7	19.5	4,382	14.0	124.0
M8 x 1.25	35.90	8,070.6	34.6	7,791	34.1	302.0
M10 x 1.5	56.80	12,769.0	54.1	12,173	67.5	598.0
M12 x 1.75	82.60	18,569.0	78.0	17,530	117.0	1,042.0
M16 x 2	155.00	34,845.0	138.0	31,164	293.0	2,591.0
M20 x 2.5	240.00	53,954.0	217.0	48,695	571.0	5,054.0

\* Based on 100 ksi shear strength

\*\* Seating torques calculated to induce 65,000 psi tensile stress with a "K" factor of 0.21.

## **WARRANTY**

Infastech makes no warranty, express or implied, except that goods sold by description, sample or model shall substantially conform to the description, sample or model, and in such case, the responsibility of Infastech shall be limited to the replacement of nonconforming goods returned to Infastech within one month after delivery to Buyer (f.o.b. at point of delivery to carrier), provided that such goods have been solely used for the purpose for which manufactured. All replaced goods are to be returned to Infastech after receiving authorization from Infastech. This warranty does not apply when any physical or chemical change in the form of the product is made by the Buyer or any other party. There are no warranties which extend beyond the description stated herein. Infastech shall not otherwise be liable for any costs or expenses incurred in the replacement of any defective or nonconforming products and in no event shall Infastech be liable for incidental or consequential damages. The foregoing warranty and such other warranties made by Infastech, as are expressly stated herein, are specifically in lieu of any other warranties, express or implied, including the implied warranties of merchantability and fitness for a particular purpose.

The selection of this product for a particular application or use is the responsibility of the customer. The applications engineers at Decorah Operations are available to assist customers in selecting the appropriate product for a particular application or use. All warranties are void if the product is plated or modified in any manner by any person other than Infastech.

Infastech has strived for total accuracy throughout this catalog. However, Infastech shall not be liable or responsible for any typographical errors that may occur. If any questions arise as to the accuracy within this catalog, please contact the applications engineers at Decorah Operations.



### **Decorah Operations**

1304 Kerr Drive • Decorah, IA 52101-2494

**voice:** 563.382.4216

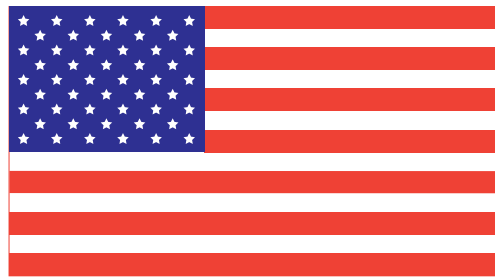
**fax:** 563.387.3326

[www.infastech.com](http://www.infastech.com)



## Founded on Innovation and Technical Expertise

The Camcar brand began in 1943, cold forming a component others said “couldn't be made”. From that manufacturing innovation – the Raycarl® cold forming process – to the TORX PLUS® Drive System and other leading-edge products, the Camcar name has become synonymous with outstanding fastening solutions.



**Made in the U.S.A.**



### **Decorah Operations**

1304 Kerr Drive • Decorah, IA 52101-2494

**voice:** 563.382.4216

**fax:** 563.387.3326

[www.infastech.com](http://www.infastech.com)