
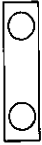
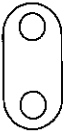


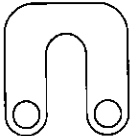
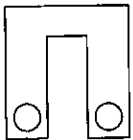
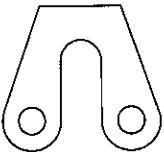
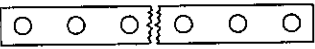
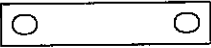
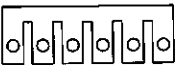
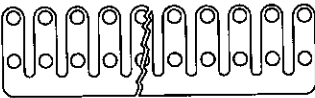

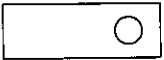
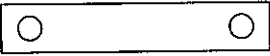


ILLUSTRATED TABLE OF CONTENTS

GROUND STRAPS, BUS BARS AND TERMINAL BLOCKS

TYPICAL CONFIGURATION	PART NUMBER	PAGE NUMBER
	5025	466
	4805 4808	467 468
	5006	469
	5006	469
	5006	469
	5006	469
	5006	469
	5006	469

TYPICAL CONFIGURATION	PART NUMBER	PAGE NUMBER
	5000	470
	5002	470
	5010 5011	470 470
	5008	471
	5904	472
	5102	473
	5102	473

Solder Lugs

Spring Clips

Spring Washers

Shoulder Washers

Stand Off Spacers

Flat Round Washers - Metallic

Flat Round Washers - Non-Metallic

O-Rings

Retaining Rings

Lockwashers, Retention Washers & Push-on Nuts

Clamps & Brackets

Expansion Plugs

Ground Straps, Bus Bars & Term. Blocks

Tab & Notch Washers

Misc. Washers & Tags

Solid State Insulators

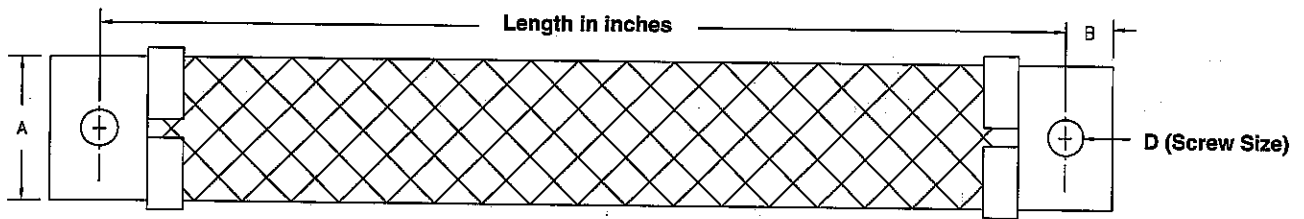
Military Standards

Custom Parts

Engineering Tables

Num. & Alpha. Index of Parts

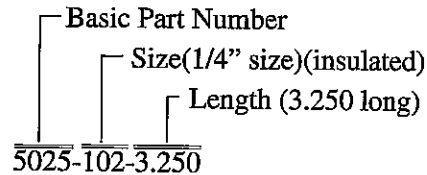
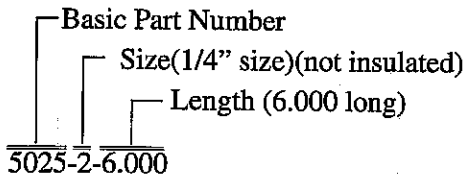
FLEXIBLE GROUNDING STRAPS



PART NUMBER	BRAID		A	B	D	APPROX. AWG EQUIV.	NOMINAL CIRC. MILLS	CAPACITY AMPS **
	NOM. WIDTH	NOM. THICK						
5025-1*	7/64	.030	.250	.125	4	18	1,800	
5025-2*	1/4	.030	.250	.125	4	14	4,200	32
5025-3*	3/8	.030	.375	.156	6	12	7,200	46
5025-4*	1/2	.030	.500	.218	8	10	9,600	53
5025-5*	1	.045	1.000	.312	10	7	20,800	85
5025-6*	1-1/2	.060	1.500	.375	1/4	3	53,064	150
5025-7*	2	.120	2.000	.500	1/4	000	154,363	310

*To specify length "L" use required length in inches as the last dash number.
 Add 100 to first dash numbers above to specify insulating flat braid.

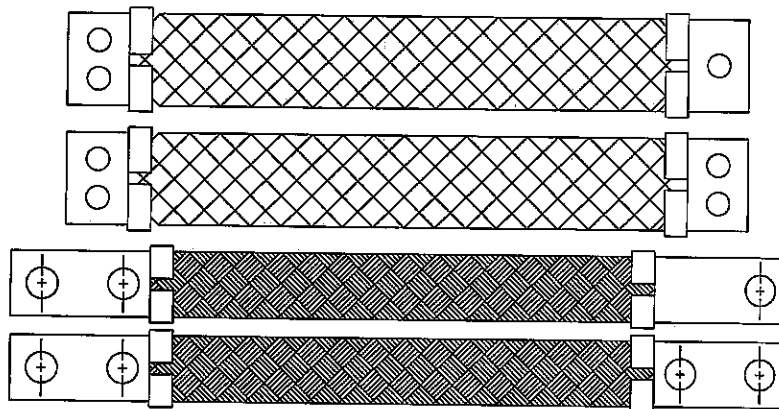
Examples:



Materials: Braid, Tinned Copper; Terminals, Copper; Insulation, Heat Shrinkable Tubing.
 Assembly: Terminals are crimped and then soft soldered to braid.

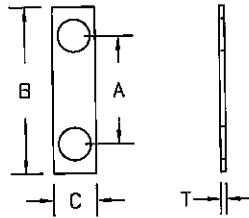
**Values are for bare cable in free air at 30°C (86°F) and intended as a reference guide only. Actual values will depend on permissible temperature rise, permissible voltage drop and other conditions of service.

*Illustrations shown below are examples of special End configurations that are available on special order. When ordering special end configurations specify hole sizes and locations. Customer is required to supply a print so that we may verify your requirements as it is not a standard catalog product.



DOUBLE WASHERS AND GROUND STRAPS

Custom Sizes Available . . . See Last Page of This Section



NOTE: Unless stated, all catalog parts are supplied without finish. See page 545 for specifying finishes.

***Material:**

- Add - 1 to part number for steel
- Add - 2 to part number for stainless steel
- Add - 3 to part number for copper

** -1 & -3 only

PART NUMBER	SCREW SIZE*	HOLE DIA.	A ± .005	B ± .010	C ± .010	T
4805-1-**	000	.030	.100	.180	.080	.016
4805-40-**	0	.062	.344	.656	.250	.048
4805-41-*	0	.067	.750	1.125	.093	.010
4805-42-**	0	.069	.250	.500	.312	.060
4805-56-**	1	.078	.281	.500	.187	.060
4805-43-*	2	.091	.328	.531	.187	.016
4805-44-*	2	.095	.250	.500	.156	.010
4805-57-*	2	.096	.391	.641	.187	.024
4805-45-*	2	.099	.437	.625	.187	.016
4805-58-*	3	.103	.437	.625	.187	.030
4805-59-*	3	.109	.344	.625	.250	.060
4805-60-*	3	.113	1.000	1.240	.320	.016
4805-2-*	3	.115	.375	.625	.218	.048
4805-61-*	4	.125	2.375	2.750	.625	.020
4805-62-*	5	.130	.612	.988	.312	.030
4805-54-*	5	.133	.750	1.032	.281	.030
4805-46-*	6	.147	.594	1.032	.250	.030
4805-47-*	6	.147	.875	1.625	.500	.030
4805-48-*	6	.150	.750	1.187	.250	.030
4805-49-*	6	.150	.187	.391	.187	.005
4805-63-*	6	.156	.750	1.062	.312	.005
4805-64-*	6	.156	.938	1.312	.312	.060
4805-50-*	6	.157	.469	.750	.375	.016
4805-51-*	8	.166	1.813	2.187	.437	.048
4805-52-*	8	.166	2.437	2.813	.562	.048
4805-53-*	8	.168	.248	.562	.300	.016
4805-4-*	8	.180	.375	.656	.281	.030
4805-8-*	8	.180	.500	.781	.281	.030
4805-12-*	8	.180	.625	.906	.281	.030
4805-16-*	8	.180	.750	1.032	.281	.030
4805-20-*	8	.180	.875	1.156	.281	.030
4805-24-*	8	.180	1.000	1.281	.281	.030
4805-28-*	8	.180	1.125	1.406	.281	.030
4805-32-*	8	.180	1.250	1.531	.281	.030
4805-38-*	8	.181	.625	1.000	.375	.030
4805-39-*	8	.187	.375	.969	.344	.010
4805-65-*	8	.187	.562	1.300	.344	.010
4805-66-*	8	.187	3.264	3.664	.500	.048
4805-3-*	8	.188	1.500	1.875	.375	.010
4805-5-*	8	.188	2.000	2.375	.375	.010
4805-55-*	8	.190	1.000	1.375	.375	.005

Solder Lugs

Spring Clips

Spring Washers

Shoulder Washers

Stand Off Spacers

Flat Round Washers - Metallic

Flat Round Washers - Non-Metallic

O-Rings

Retaining Rings

Lockwashers, Retention Washers & Push-on Nuts

Clamps & Brackets

Expansion Plugs

Ground Straps, Bus Bars & Term. Blocks

Tab & Notch Washers

Misc. Washers & Tags

Solid State Insulators

Military Standards

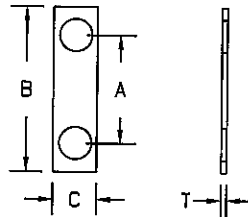
Custom Parts

Engineering Tables

Num. & Alpha. Index of Parts

DOUBLE WASHERS AND GROUND STRAPS (Continued)

Custom Sizes Available . . . See Last Page of This Section



NOTE: Unless stated, all catalog parts are supplied without finish. See page 545 for specifying finishes.

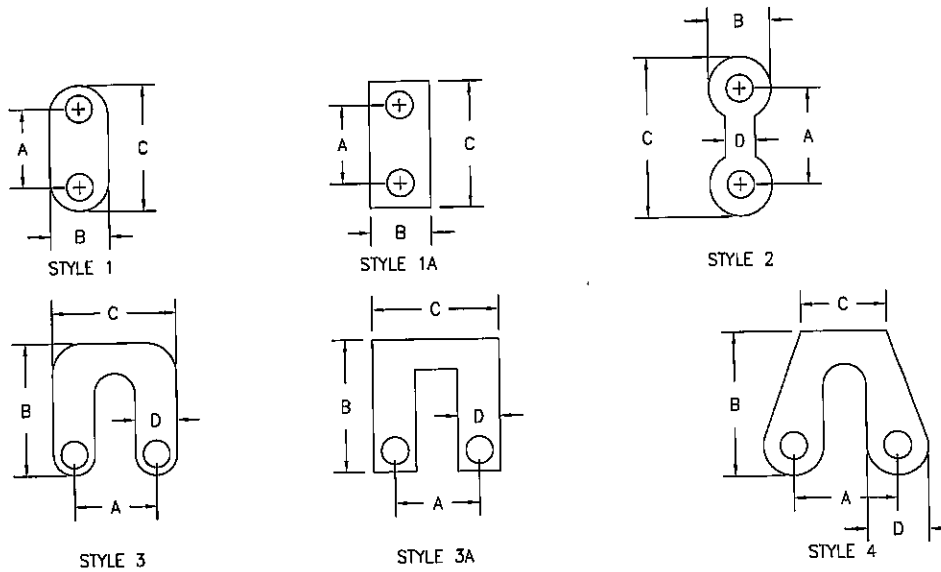
*Material:

- Add - 1 to part number for steel
- Add - 2 to part number for stainless steel
- Add - 3 to part number for copper

PART NUMBER	SCREW SIZE*	HOLE DIA.	A ± .005	B ± .010	C ± .010	T
4808-1-*	10	.193	3.000	3.437	.719	.064
4808-3-*	10	.200	.750	1.500	.370	.064
4808-5-*	10	.200	1.310	1.880	.500	.064
4808-2-*	10	.201	.750	1.187	.437	.048
4808-4-*	10	.209	.375	.719	.344	.030
4808-8-*	10	.209	.500	.844	.344	.030
4808-12-*	10	.209	.625	.969	.344	.030
4808-16-*	10	.209	.750	1.093	.344	.030
4808-20-*	10	.209	.875	1.218	.344	.030
4808-24-*	10	.209	1.000	1.344	.344	.030
4808-28-*	10	.209	1.125	1.469	.344	.030
4808-32-*	10	.209	1.250	1.594	.344	.030
4808-38-*	1/4	.257	1.000	1.562	.562	.016
4808-39-*	1/4	.257	1.500	2.125	.625	.048
4808-40-*	3/8	.386	1.500	2.125	.625	.048
4808-41-*	3/8	.392	3.682	4.494	.625	.064
4808-6-*	3/8	.406	.878	1.690	.562	.030
4808-42-*	3/8	.406	3.713	4.525	.625	.064

JUMPERS (ALSO SEE 2 HOLE BUS BARS)

Custom Sizes Available . . . See Last Page of This Section



*To specify material add suffix
 "B" for brass
 "C" for copper
 Example: 5006-5B

NOTE: Unless stated, all catalog parts are supplied without finish. See page 545 for specifying finishes.

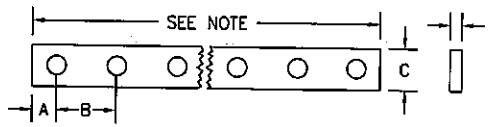
PART NUMBER	SCREW SIZE	STYLE	A ± .005	B ± .010	C ± .010	D ± .010	THICKNESS
5006-17*		1	.172	.188	.360	—	.010
5006-13*	2	1A	.437	.190	.630	—	.032
5006-2*	1	1	.120	.138	.253	—	.010
5006-3*	2	1	.518	.140	.657	—	.020
5006-5*	4	1	.759	.373	1.110	—	.032
5006-4*	6	1A	.198	.188	.392	—	.005
5006-6*	6	1A	.752	.254	1.191	—	.032
5006-10*	6	1	.750	.314	1.060	—	.040
5006-9*	6	1	.752	.753	1.502	—	.064
5006-12*	8	1A	.625	.373	1.000	—	.032
5006-11*	8	1	1.315	.507	1.814	—	.032
5006-8*	6	2	.750	.310	1.060	.153	.040
5006-16*	1/4	2	2.950	.621&.500	3.503	.373	.064
5006-1*	6	3	.375	.554	.622	.249	.020
5006-14*	10	3A	.625	1.245	1.028	.377	.032
5006-15*	1/4	3A	1.120	1.620	1.750	.620	.125
5006-7*	6	4	.455	.750	.350	.280x.165	.025

- Solder Lugs
- Spring Clips
- Spring Washers
- Shoulder Washers
- Stand Off Spacers
- Flat Round Washers - Metallic
- Flat Round Washers - Non-Metallic
- O-Rings
- Retaining Rings
- Lockwashers, Retention Washers & Push-on Nuts
- Clamps & Brackets
- Expansion Plugs
- Ground Straps, Bus Bars & Term. Blocks
- Tab & Notch Washers
- Misc. Washers & Tags
- Solid State Insulators
- Military Standards
- Custom Parts
- Engineering Tables
- Num. & Alpha. Index of Parts

BUS BAR (STYLE 1) COPPER – CADMIUM PLATED

Custom Sizes Available . . . See Last Page of This Section

Refer to Part #5904 for mating terminal block

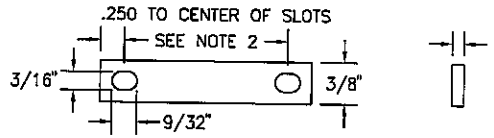


PART NUMBER	SIZE	A	B	C	T	CIRCULAR MIL AREA
5000-2-(N)*	6	7/32	19/32	1/4	.032	9,945
5000-4-(N)*	10	7/32	3/4	7/16	.051	28,404
5000-6-(N)*	1/4	5/16	1-1/2	5/8	.051	40,577
5000-8-(N)*	3/8	5/16	1-1/2	5/8	.051	40,577

*Note 1: Bus bars are available in lengths of 2 to 20 holes.
When ordering put the number of holes required after the part number.
EXAMPLE: 5000-2-4 = 4 hole bus bar for the #6 screw size stud.

BUS BAR (STYLE 2) COPPER

Custom Sizes Available . . . See Last Page of This Section



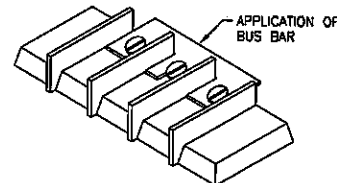
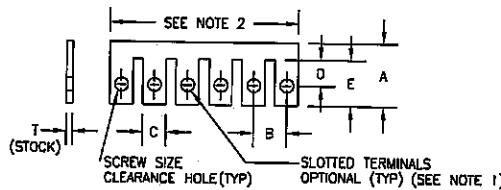
NOTE: Unless stated, all catalog parts are supplied without finish. See page 545 for specifying finishes.

PART NUMBER	T	CIRCULAR MIL AREA
5002-1-*	.016	7,447
5002-2-*	.032	14,894
5002-3-*	.051	24,364

*Note 2: The last dash number designates the distance between slots in 1/8" increments, starting with -3 or 3/8.
EXAMPLE: 5002-2-5 = 1/32 thick bus bar with 5/8 hole spacing.

BUS BAR (STYLE 3) COPPER – TIN PLATED

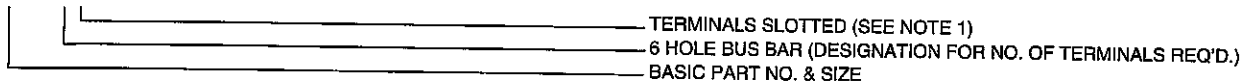
Custom Sizes Available . . . See Last Page of This Section



PART NUMBER	SCREW SIZE*	DIMENSIONS						NO. TERM. MAX.	CIRC. MIL. AREA
		A	B	C MAX	D	E	T		
5010-1-*	4	3/8	3/8	1/4	13/64	5/16	.032	21	2,526
5010-2-*	5	41/64	3/8	1/4	3/8	33/64	.032	21	5,093
5010-3-*	6	53/64	7/16	9/32	7/16	41/64	.032	20	7,619
5011-1-*	8	31/32	9/16	11/32	1/2	23/32	.050	17	15,915
5011-2-*	10	1-5/32	11/16	13/32	5/8	29/32	.050	10	15,915
5011-3-*	12	1-7/32	7/8	1/2	11/16	29/32	.086	8	34,200
5011-4-*	1/4	1-5/8	1-1/8	5/8	7/8	1-5/16	.125	6	49,200

Note 1: Add "S" to part number for slotting all terminals; except end terminals.
Note 2: Bus Bars are available in lengths of 2 to 20 holes. When ordering put the number of holes required after the part number.
*EXAMPLE OF PART NUMBER

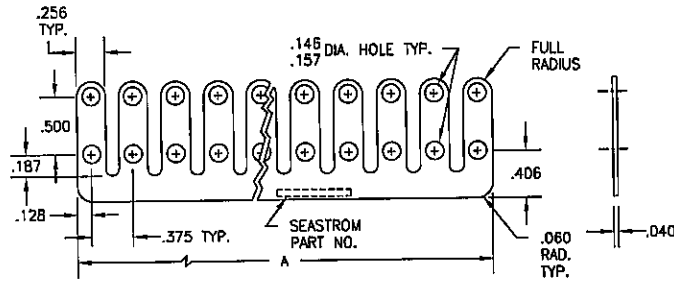
5011-1-6 S



TERMINAL STRIP, GROUNDING

(USED ON 8TB SERIES NAVY BLOCKS)

Custom Sizes Available . . . See Last Page of This Section



Material : Brass
Finish: Nickel Plate

PART NUMBER	NUMBER OF TERMINALS	A LENGTH REF.
5008-2	2	.631
5008-3	3	1.006
5008-4	4	1.381
5008-5	5	1.756
5008-6	6	2.131
5008-7	7	2.506
5008-8	8	2.881
5008-9	9	3.256
5008-10	10	3.631
5008-11	11	4.006
5008-12	12	4.381
5008-13	13	4.756
5008-14	14	5.131
5008-15	15	5.506
5008-16	16	5.881
5008-17	17	6.256
5008-18	18	6.631
5008-19	19	7.006
5008-20	20	7.381

Solder Lugs

Spring Clips

Spring Washers

Shoulder Washers

Stand Off Spacers

Flat Round Washers - Metallic

Flat Round Washers - Non-Metallic

O-Rings

Retaining Rings

Lockwashers, Retention Washers & Push-on Nuts

Clamps & Brackets

Expansion Plugs

Ground Straps, Bus Bars & Term. Blocks

Tab & Notch Washers

Misc. Washers & Tags

Solid State Insulators

Military Standards

Custom Parts

Engineering Tables

Num. & Alpha. Index of Parts

TERMINAL BLOCK ASSEMBLY

Custom Sizes Available . . . See Last Page of This Section



Configuration for
Pt. = 5904-2 & 5904-4



Configuration for
Pt. = 5904-6 & 5904-8

Refer to: Pt. #5102 for
mating insulating strips.

Refer to: Pt. #5000 for
mating bus bars.

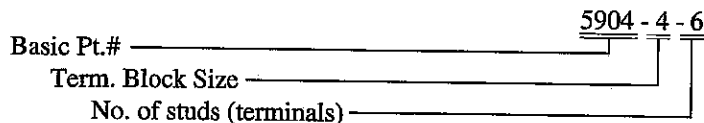
PART NUMBER	STUD SIZE	CENTER-CENTER DISTANCE		MTG. HOLE SCREW SIZE	WIDTH	MAX. HEIGHT	MAXIMUM NO. OF STUDS (TERMINALS) AVAILABLE
		STUDS	MTG. HOLES				
5904-2-*	6-32	.594	.594	4	.688	.953	20
5904-4-*	10-32	.750	.750	4	.938	1.079	16
5904-6-*	1/4-28	1.500	1.500	6	1.250	1.321	8
5904-8-*	3/8-24	1.500	1.500	6	1.250	1.517	8

*Indicates the number of studs (terminals) desired in the assembly

Material: Block — diallyl isophthalate
Studs, Washers, Lockwashers, Nuts — stainless steel

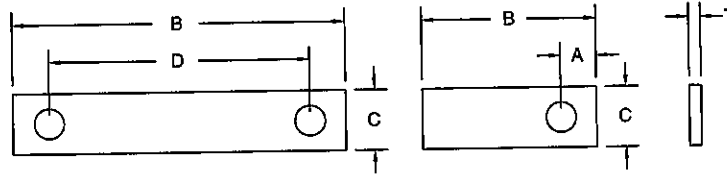
Temperature limit for continuous use is 400°F maximum (205°C)

Example of Part Number:



INSULATING STRIP SILICONE GLASS

Custom Sizes Available . . . See Last Page of This Section



Even numbers

Odd numbers

Refer to Part #5904
for mating
terminal block

PART NUMBER	SCREW SIZE	A	B	C	D	T
5102-1	6	.120	.550	.250	—	.032
5102-2	6	.120	.840	.250	.593	.032
5102-7	10	.190	.780	.438	—	.032
5102-8	10	.190	1.120	.438	.750	.032
5102-9	1/4	.310	1.380	.625	—	.032
5102-10	1/4	.310	2.120	.625	1.500	.032
5102-11	5/16	.310	1.380	.625	—	.032
5102-12	5/16	.310	2.120	.625	1.500	.032
5102-13	3/8	.310	1.380	.625	—	.032
5102-14	3/8	.310	2.120	.625	1.500	.032

Solder
Lugs

Spring
Clips

Spring
Washers

Shoulder
Washers

Stand Off
Spacers

Flat Round
Washers –
Metallic

Flat Round
Washers –
Non-Metallic

O-Rings

Retaining
Rings

Lockwashers,
Retention
Washers &
Push-on Nuts

Clamps &
Brackets

Expansion
Plugs

Ground
Straps, Bus
Bars &
Term. Blocks

Tab & Notch
Washers

Misc.
Washers
& Tags

Solid State
Insulators

Military
Standards

Custom
Parts

Engineering
Tables

Num. &
Alpha. Index
of Parts

HOW TO REQUEST A FAX QUOTE:

CUSTOM GROUND STRAPS, BUS BARS & TERMINAL BLOCKS

If your application requires a custom ground strap, bus bar or terminal block with dimensions not listed in this catalog, simply photocopy the adjoining page, fill in all necessary dimensions, and fax it to us at 208-734-7222. It's that simple!

Seastrom Manufacturing can manufacture virtually any custom ground strap, bus bar or terminal block you require. *

Locate the part number configuration to best suit your application. (See the illustrated table of contents in the front of this section.) Fill in the configuration part number on the photocopy of the Fax Quote page, as well as all necessary dimensions.*

EXAMPLE

PART CONFIGURATION: <u>5006</u>	STYLE: <u>3</u>
A: <u>.375</u> T/Thickness: <u>.020</u>	Nom. Circular Mills: _____
B: <u>.554</u> Hole Dia: _____	No. Terminal Studs: _____
C: <u>.622</u> Braid Width: _____	Width: _____
D: <u>.249</u> Braid Nom. Thickness: _____	Max Height: _____
E: _____ Capacity Amps: _____	Stud/Screw Size: <u>6</u>
	Center-Center Distance (Studs): <u>1</u>

*If the configuration you require does not match the configuration in the front of this section, please refer to the Custom Parts section for a fax quote cover sheet and a blank print to sketch your own design.

If we can answer any questions concerning your custom ground strap, bus bar or termi-

FAX QUOTE

CUSTOM GROUND STRAPS, BUS BARS & TERMINAL BLOCKS

PLEASE FAX TO:

SEASTROM MANUFACTURING COMPANY, INC. 208•734•7222
ATTENTION: Inside Sales

DATE _____

PART CONFIGURATION: _____		STYLE: _____
A: _____	T/Thickness: _____	Nom. Circular Mills: _____
B: _____	Hole Dia: _____	No. Terminal Studs: _____
		Width: _____
C: _____	Braid Width: _____	Max Height: _____
D: _____	Braid Nom. Thickness: _____	Stud/Screw Size: _____
E: _____	Capacity Amps: _____	Center-Center Distance (Studs): _____

UNLESS OTHERWISE SPECIFIED ALL DIMENSIONS WILL BE TO CATALOG TOLERANCES.*

Material: _____ Deburring Required? Yes No

Plating: _____

Other Requirements: _____

From: _____ Title: _____

Company: _____

Address: _____ City: _____ State: _____ Zip: _____

Phone: _____ Fax: _____

DO NOT TEAR OUT ... PLEASE PHOTOCOPY

***See Pages 551
and 552 for
commercial
thickness,
tolerances.**

Please Quote the following:	<i>For Seastrom Use</i>	
QUANTITY	PRICE	DELIVERY
Estimated Yearly Usage:		

- Solder Lugs
- Spring Clips
- Spring Washers
- Shoulder Washers
- Stand Off Spacers
- Flat Round Washers - Metallic
- Flat Round Washers - Non-Metallic
- O-Rings
- Retaining Rings
- Lockwashers, Retention Washers & Push-on Nuts
- Clamps & Brackets
- Expansion Plugs
- Ground Straps, Bus Bars & Term. Blocks
- Tab & Notch Washers
- Misc. Washers & Tags
- Solid State Insulators
- Military Standards
- Custom Parts
- Engineering Tables
- Num. & Alpha. Index of Parts