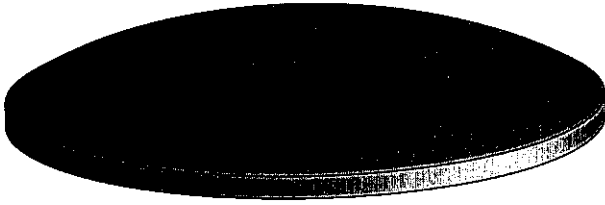


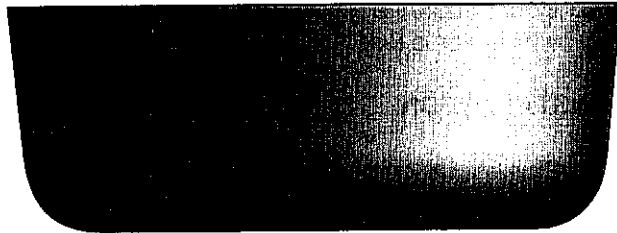
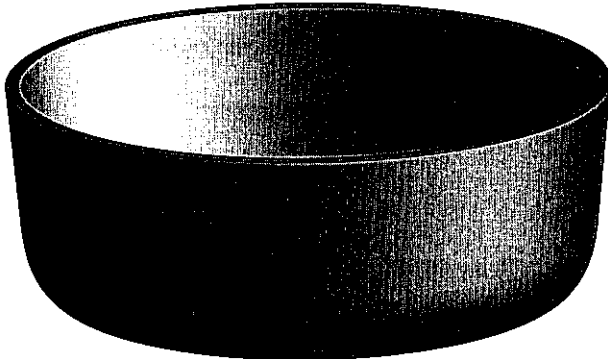
TABLE OF CONTENTS

EXPANSION PLUGS



5790 CONCAVE TYPE

Page 450



5791 TAPERED CUP TYPE

Page 458

FOR MATERIAL INFORMATION, SEE ENGINEERING
TABLES BEGINNING ON PAGE 543.

EXPANSION PLUGS



TYPE 5790 CONCAVE STYLE EXPANSION PLUGS

A. HOLE PREPARATION

1. Recommended counterbore diameter = max. plug diameter plus .002.
2. Counterbore should have a finish 100 microinches or smoother.
3. The counterbore must be clean and smooth with a sharp, square corner. A fillet may prevent the plug from sealing properly.
4. Counterbore diameter should be round within .002 T.I.R.
5. Counterbore depth ("C" in illustration) should be 1-1/2 times plug metal thickness minimum.
6. Counterbore "ledge" ("B" in illustration) should be approximately 1/10 of plug diameter or 1/4", whichever is less.

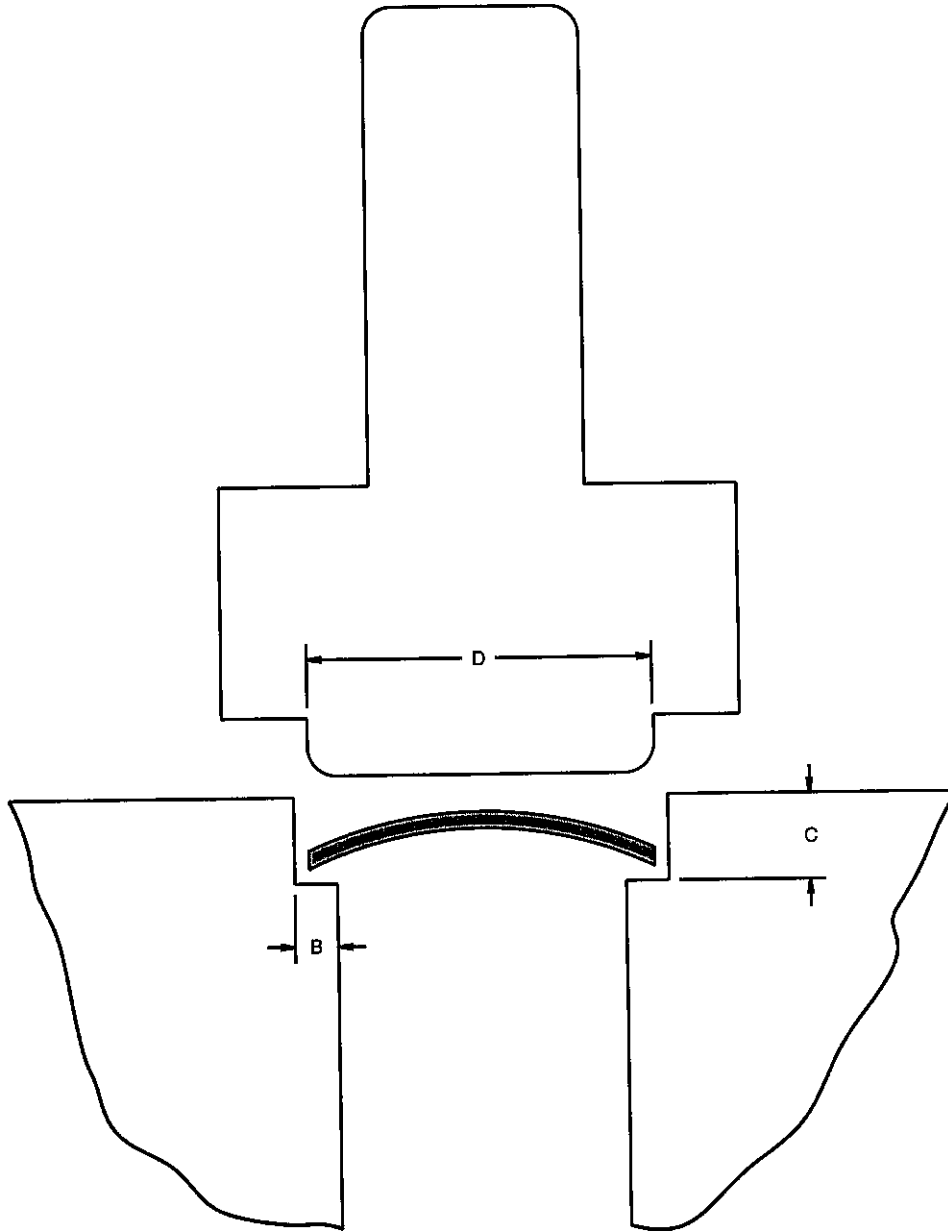
B. INSTALLATION

1. Plug should be installed with a tool similar to that shown in illustration. Tool diameter "D" = .95 x counterbore diameter.
2. The tool should be designed to bottom out when the plug is flattened 30% or more of its formed height but never flattened completely. The amount of flattening must be established by the user depending on the tightness required of the seal consistent with other factors of the user's design.
3. A gasket type sealant may be used for severe applications.
4. Plugs should be driven square to the hole. The shoulder on the driving tool should bottom out on the part the plug is being driven into. This will control alignment and proper depth.

C. CAUTION

1. Barrel plating may nick the edges of the larger plugs and impair their sealing qualities.
2. This data has been obtained from numerous sources, including "in house" testing. While we believe it to be valid, we do not assume any responsibility for its use due to circumstances which may vary widely between users.

EXPANSION PLUGS *(Continued)*



INSTALLATION TOOL FOR CONCAVE STYLE EXPANSION PLUGS

Solder Lugs

Spring Clips

Spring Washers

Shoulder Washers

Stand Off Spacers

Flat Round Washers – Metallic

Flat Round Washers – Non-Metallic

O-Rings

Retaining Rings

Lockwashers, Retention Washers & Push-on Nuts

Clamps & Brackets

Expansion Plugs

Ground Straps, Bus Bars & Term. Blocks

Tab & Notch Washers

Misc. Washers & Tags

Solid State Insulators

Military Standards

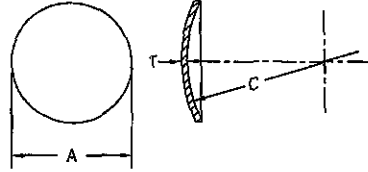
Custom Parts

Engineering Tables

Num. & Alpha. Index of Parts

EXPANSION PLUGS

Custom Sizes Available . . . See Last Page of This Section



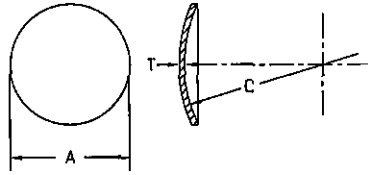
NOTE: Unless stated, all catalog parts are supplied without finish. See page 545 for specifying finishes.

PART NUMBER	NOMINAL DIAMETER	A		T	C ± 1/64	MATERIAL
		MAX.	MIN.			
5790-23	3/32	.099	.095	.012	5/32	Stainless Steel
5790-189	1/8	.127	.123	.012	11/64	Brass
5790-24	1/8	.127	.123	.012	11/64	Stainless Steel
5790-1	1/8	.127	.123	.024	11/64	Steel
5790-231	1/8	.130	.126	.012	11/64	Brass
5790-131	9/64	.139	.137	.016	1/8	Brass
5790-132	9/64	.145	.143	.016	1/8	Brass
5790-133	9/64	.145	.140	.016	5/32	Brass
5790-232	5/32	.157	.155	.012	1/8	Stainless Steel
5790-25	3/16	.189	.185	.025	11/64	Aluminum
5790-26	3/16	.189	.185	.024	11/64	Stainless Steel*
5790-27	3/16	.189	.185	.012	13/64	Stainless Steel
5790-190	3/16	.189	.185	.012	13/64	Brass
5790-2	3/16	.189	.185	.024	13/64	Steel
5790-28	3/16	.189	.185	.025	13/64	Brass
5790-233	3/16	.189	.185	.025	13/64	Stainless Steel
5790-147	3/16	.199	.195	.012	7/32	Brass
5790-149	3/16	.199	.195	.012	13/64	Stainless Steel
5790-148	3/16	.199	.195	.012	7/32	Stainless Steel
5790-235	7/32	.220	.216	.008	11/64	Brass
5790-150	7/32	.220	.216	.012	15/64	Brass
5790-236	7/32	.220	.216	.012	15/64	Stainless Steel
5790-191	7/32	.220	.216	.025	13/64	Aluminum
5790-192	7/32	.220	.216	.025	13/64	Brass
5790-29	7/32	.220	.218	.016	23/64	Brass
5790-193	7/32	.222	.218	.008	15/64	Brass
5790-134	15/16	.235	.231	.016	7/32	Brass
5790-135	1/4	.250	.245	.030	5/32	Steel
5790-32	1/4	.252	.248	.012	7/32	Brass
5790-234	1/4	.252	.248	.024	7/32	Steel
5790-33	1/4	.252	.248	.025	7/32	Aluminum
5790-3	1/4	.252	.248	.030	7/32	Steel
5790-34	1/4	.252	.248	.030	7/32	Stainless Steel*
5790-35	1/4	.252	.248	.032	7/32	Aluminum
5790-228	1/4	.252	.248	.032	7/32	Brass
5790-151	19/64	.300	.296	.012	9/32	Brass
5790-194	19/64	.300	.296	.012	9/32	Steel
5790-195	19/64	.300	.296	.012	9/32	Stainless Steel
5790-196	19/64	.300	.296	.024	9/32	Steel
5790-136	5/16	.312	.307	.030	7/32	Stainless Steel

*300 Series Stainless Steel

EXPANSION PLUGS (Continued)

Custom Sizes Available . . . See Last Page of This Section



NOTE: Unless stated, all catalog parts are supplied without finish. See page 545 for specifying finishes.

PART NUMBER	NOMINAL DIAMETER	A		T	C ± 1/64	MATERIAL
		MAX.	MIN.			
5790-197	5/16	.313	.309	.016	3/16	Brass
5790-198	5/16	.313	.309	.015	3/16	Stainless Steel
5790-30	5/16	.313	.309	.024	3/16	Steel
5790-36	5/16	.315	.310	.024	17/64	Steel
5790-4	5/16	.315	.310	.060	17/64	Steel
5790-37	5/16	.315	.310	.060	17/64	Stainless Steel*
5790-152	5/16	.315	.310	.062	17/64	Brass
5790-38	5/16	.315	.310	.063	17/64	Aluminum
5790-237	5/16	.320	.315	.040	5/16	Stainless Steel
5790-5	5/16	.320	.315	.042	5/16	Steel
5790-238	23/64	.356	.350	.025	7/32	Aluminum
5790-39	23/64	.356	.350	.025	7/32	Brass
5790-239	3/8	.377	.372	.032	13/32	Aluminum
5790-199	3/8	.377	.372	.042	13/32	Steel
5790-6	3/8	.377	.372	.060	13/32	Steel
5790-40	3/8	.377	.372	.060	13/32	Stainless Steel*
5790-153	3/8	.377	.372	.062	13/32	Brass
5790-41	3/8	.377	.372	.063	13/32	Aluminum
5790-200	25/64	.395	.390	.032	13/32	Brass
5790-201	25/64	.395	.390	.032	13/32	Aluminum
5790-202	25/64	.395	.390	.030	13/32	Stainless Steel
5790-137	25/64	.395	.390	.030	13/32	Steel
5790-138	7/16	.437	.432	.030	25/64	Stainless Steel
5790-7	7/16	.437	.432	.024	1"	Steel
5790-203	7/16	.440	.435	.032	15/32	Brass
5790-204	7/16	.440	.435	.032	15/32	Aluminum
5790-205	7/16	.440	.435	.030	15/32	Steel
5790-8	7/16	.440	.435	.060	15/32	Steel
5790-42	7/16	.440	.435	.060	15/32	Stainless Steel*
5790-154	7/16	.440	.435	.062	15/32	Brass
5790-43	7/16	.440	.435	.063	15/32	Aluminum
5790-240	7/16	.440	.435	.125	15/32	Stainless Steel
5790-206	1/2	.502	.497	.032	17/32	Aluminum
5790-207	1/2	.502	.497	.032	17/32	Brass
5790-9	1/2	.502	.497	.060	17/32	Steel
5790-44	1/2	.502	.497	.060	17/32	Stainless Steel*
5790-155	1/2	.502	.497	.062	17/32	Brass
5790-45	1/2	.502	.497	.063	17/32	Aluminum
5790-46	9/16	.565	.560	.060	5/8	Stainless Steel*
5790-47	9/16	.565	.560	.063	5/8	Aluminum

*300 Series Stainless Steel

Solder Lugs

Spring Clips

Spring Washers

Shoulder Washers

Stand Off Spacers

Flat Round Washers – Metallic

Flat Round Washers – Non-Metallic

O-Rings

Retaining Rings

Lockwashers, Retention Washers & Push-on Nuts

Clamps & Brackets

Expansion Plugs

Ground Straps, Bus Bars & Term. Blocks

Tab & Notch Washers

Misc. Washers & Tags

Solid State Insulators

Military Standards

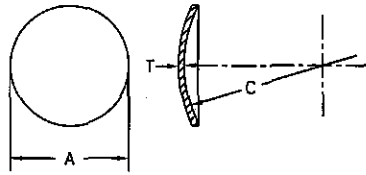
Custom Parts

Engineering Tables

Num. & Alpha. Index of Parts

EXPANSION PLUGS (Continued)

Custom Sizes Available . . . See Last Page of This Section



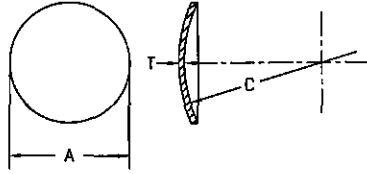
NOTE: Unless stated, all catalog parts are supplied without finish. See page 545 for specifying finishes.

PART NUMBER	NOMINAL DIAMETER	A		T	C ± 1/64	MATERIAL
		MAX.	MIN.			
5790-156	9/16	.565	.560	.062	5/8	Brass
5790-241	9/16	.565	.560	.080	5/8	Aluminum
5790-10	9/16	.565	.560	.060	11/16	Steel
5790-48	19/32	.595	.593	.025	5/8	Aluminum
5790-49	39/64	.614	.608	.060	5/8	Steel
5790-208	5/8	.628	.622	.032	3/4	Aluminum
5790-209	5/8	.628	.622	.032	3/4	Brass
5790-210	5/8	.628	.622	.030	3/4	Steel
5790-211	5/8	.628	.622	.030	3/4	Stainless Steel
5790-11	5/8	.628	.622	.060	3/4	Steel
5790-50	5/8	.628	.622	.060	3/4	Stainless Steel*
5790-157	5/8	.628	.622	.062	3/4	Brass
5790-51	5/8	.628	.622	.063	3/4	Aluminum
5790-242	21/32	.655	.651	.025	3/4	Aluminum
5790-31	21/32	.655	.651	.024	3"	Steel
5790-52	21/32	.655	.651	.025	3"	Aluminum
5790-243	43/64	.677	.672	.040	5/8	Aluminum
5790-12	43/64	.677	.672	.042	5/8	Steel
5790-139	11/16	.690	.684	.063	7/8	Aluminum
5790-13	11/16	.690	.684	.060	7/8	Steel
5790-53	11/16	.690	.684	.060	7/8	Stainless Steel*
5790-158	11/16	.690	.684	.062	7/8	Brass
5790-54	11/16	.690	.684	.063	7/8	Aluminum
5790-140	3/4	.752	.747	.030	2-1/8	Stainless Steel
5790-14	3/4	.753	.747	.060	15/16	Steel
5790-55	3/4	.753	.747	.060	15/16	Stainless Steel*
5790-159	3/4	.753	.747	.062	15/16	Brass
5790-56	3/4	.753	.747	.063	15/16	Aluminum
5790-57	51/64	.795	.790	.060	15/16	Steel
5790-15	13/16	.815	.809	.060	1-1/32	Steel
5790-58	13/16	.815	.809	.060	1-1/32	Stainless Steel*
5790-59	13/16	.815	.809	.063	1-1/32	Aluminum
5790-60	13/16	.815	.809	.063	1-1/32	Brass
5790-141	53/64	.828	.826	.030	1-19/32	Steel
5790-61	55/64	.857	.852	.060	1-3/32	Steel
5790-212	7/8	.878	.872	.032	1-3/32	Aluminum
5790-213	7/8	.878	.872	.032	1-3/32	Brass
5790-214	7/8	.878	.872	.030	1-3/32	Steel
5790-215	7/8	.878	.872	.030	1-3/32	Stainless Steel
5790-62	7/8	.878	.872	.080	1-3/32	Stainless Steel*

*300 Series Stainless Steel

EXPANSION PLUGS *(Continued)*

Custom Sizes Available . . . See Last Page of This Section



NOTE: Unless stated, all catalog parts are supplied without finish. See page 545 for specifying finishes.

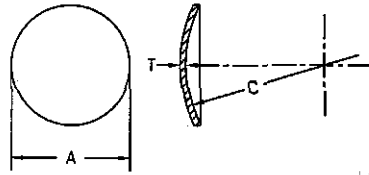
PART NUMBER	NOMINAL DIAMETER	A		T	C ± 1/64	MATERIAL
		MAX.	MIN.			
5790-63	7/8	.878	.872	.080	1-3/32	Aluminum
5790-160	7/8	.878	.872	.080	1-3/32	Brass
5790-16	7/8	.878	.872	.083	1-3/32	Steel
5790-216	15/16	.940	.934	.032	1-5/32	Aluminum
5790-217	15/16	.940	.934	.032	1-5/32	Brass
5790-218	15/16	.940	.934	.030	1-5/32	Steel
5790-219	15/16	.940	.934	.030	1-5/32	Stainless Steel
5790-64	15/16	.940	.934	.080	1-5/32	Stainless Steel*
5790-65	15/16	.940	.934	.080	1-5/32	Aluminum
5790-161	15/16	.940	.934	.080	1-5/32	Brass
5790-17	15/16	.940	.934	.090	1-5/32	Steel
5790-66	15/16	.947	.942	.048	41/64	Steel
5790-67	1"	.996	.991	.060	1-29/64	Steel
5790-162	1"	1.003	.997	.080	1-1/8	Brass
5790-18	1"	1.003	.997	.083	1-1/8	Steel
5790-68	1"	1.003	.997	.080	1-3/16	Stainless Steel*
5790-69	1"	1.003	.997	.080	1-3/16	Aluminum
5790-220	1"	1.003	.997	.032	1-1/8	Aluminum
5790-221	1"	1.003	.997	.032	1-1/8	Brass
5790-222	1"	1.003	.997	.030	1-1/8	Steel
5790-223	1"	1.003	.997	.030	1-1/8	Stainless Steel
5790-165	1-1/32	1.034	1.028	.080	1-1/4	Stainless Steel*
5790-163	1-1/32	1.034	1.028	.080	1-1/4	Aluminum
5790-164	1-1/32	1.034	1.028	.090	1-1/4	Steel
5790-70	1-1/16	1.065	1.059	.080	1-1/4	Stainless Steel*
5790-71	1-1/16	1.065	1.059	.080	1-1/4	Aluminum
5790-72	1-1/16	1.065	1.059	.090	1-1/4	Steel
5790-229	1-1/16	1.065	1.059	.080	1-1/4	Brass
5790-224	1-1/8	1.128	1.122	.050	1-3/8	Brass
5790-225	1-1/8	1.128	1.122	.050	1-3/8	Stainless Steel
5790-230	1-1/8	1.128	1.122	.080	1-3/8	Brass
5790-73	1-1/8	1.128	1.122	.080	1-3/8	Stainless Steel*
5790-74	1-1/8	1.128	1.122	.080	1-3/8	Aluminum
5790-75	1-1/8	1.128	1.122	.083	1-3/8	Steel
5790-76	1-9/64	1.144	1.139	.060	1-3/8	Steel
5790-77	1-3/16	1.181	1.176	.032	1-1/2	Brass
5790-78	1-3/16	1.190	1.184	.080	1-1/2	Stainless Steel*
5790-79	1-3/16	1.190	1.184	.080	1-1/2	Aluminum
5790-80	1-3/16	1.190	1.184	.090	1-1/2	Steel
5790-81	1-1/4	1.253	1.247	.080	1-5/8	Stainless Steel*

*300 Series Stainless Steel

- Solder Lugs
- Spring Clips
- Spring Washers
- Shoulder Washers
- Stand Off Spacers
- Flat Round Washers - Metallic
- Flat Round Washers - Non-Metallic
- O-Rings
- Retaining Rings
- Lockwashers, Retention Washers & Push-on Nuts
- Clamps & Brackets
- Expansion Plugs**
- Ground Straps, Bus Bars & Term. Blocks
- Tab & Notch Washers
- Misc. Washers & Tags
- Solid State Insulators
- Military Standards
- Custom Parts
- Engineering Tables
- Num. & Alpha. Index of Parts

EXPANSION PLUGS (Continued)

Custom Sizes Available . . . See Last Page of This Section



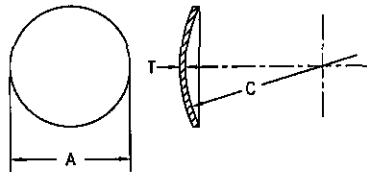
NOTE: Unless stated, all catalog parts are supplied without finish. See page 545 for specifying finishes.

PART NUMBER	NOMINAL DIAMETER	A		T	C ± 1/64	MATERIAL
		MAX.	MIN.			
5790-82	1-1/4	1.253	1.247	.080	1-5/8	Aluminum
5790-19	1-1/4	1.253	1.247	.083	1-5/8	Steel
5790-83	1-5/16	1.317	1.307	.080	1-3/4	Stainless Steel*
5790-84	1-5/16	1.317	1.307	.080	1-3/4	Aluminum
5790-244	1-5/16	1.317	1.307	.080	1-3/4	Brass
5790-85	1-5/16	1.317	1.307	.090	1-3/4	Steel
5790-86	1-3/8	1.380	1.370	.080	1-13/16	Stainless Steel*
5790-87	1-3/8	1.380	1.370	.080	1-13/16	Aluminum
5790-20	1-3/8	1.380	1.370	.083	1-13/16	Steel
5790-88	1-7/16	1.442	1.432	.080	2"	Stainless Steel*
5790-89	1-7/16	1.442	1.432	.080	2"	Aluminum
5790-90	1-7/16	1.442	1.432	.090	2"	Steel
5790-91	1-1/2	1.505	1.495	.050	2-1/8	Aluminum
5790-92	1-1/2	1.505	1.495	.080	2-1/8	Stainless Steel*
5790-93	1-1/2	1.505	1.495	.080	2-1/8	Aluminum
5790-94	1-1/2	1.505	1.495	.083	2-1/8	Steel
5790-95	1-9/16	1.568	1.558	.090	2-1/4	Steel
5790-96	1-9/16	1.568	1.558	.080	2-1/4	Aluminum
5790-97	1-9/16	1.568	1.558	.080	2-1/4	Stainless Steel*
5790-98	1-37/64	1.576	1.571	.060	1-19/64	Steel
5790-226	1-5/8	1.630	1.620	.032	2-3/8	Aluminum
5790-245	1-5/8	1.630	1.620	.032	2-3/8	Brass
5790-227	1-5/8	1.630	1.620	.030	2-3/8	Steel
5790-99	1-5/8	1.630	1.620	.080	2-3/8	Stainless Steel*
5790-100	1-5/8	1.630	1.620	.080	2-3/8	Aluminum
5790-21	1-5/8	1.630	1.620	.083	2-3/8	Steel
5790-166	1-11/16	1.693	1.683	.080	2-1/2	Aluminum
5790-167	1-11/16	1.693	1.683	.090	2-1/2	Steel
5790-168	1-11/16	1.693	1.683	.080	2-1/2	Stainless Steel*
5790-101	1-3/4	1.755	1.745	.080	2-11/16	Stainless Steel*
5790-102	1-3/4	1.755	1.745	.080	2-11/16	Aluminum
5790-22	1-3/4	1.755	1.745	.083	2-11/16	Steel
5790-103	1-3/4	1.755	1.745	.080	2-11/16	Brass
5790-169	1-13/16	1.817	1.807	.080	2-3/4	Aluminum
5790-170	1-13/16	1.817	1.807	.090	2-3/4	Steel
5790-171	1-13/16	1.817	1.807	.080	2-3/4	Stainless Steel*
5790-104	1-7/8	1.880	1.870	.080	2-7/8	Stainless Steel*
5790-105	1-7/8	1.880	1.870	.080	2-7/8	Aluminum
5790-106	1-7/8	1.880	1.870	.083	2-7/8	Steel
5790-172	1-15/16	1.942	1.932	.080	3-3/32	Aluminum

*300 Series Stainless Steel

EXPANSION PLUGS (Continued)

Custom Sizes Available . . . See Last Page of This Section



NOTE: Unless stated, all catalog parts are supplied without finish. See page 545 for specifying finishes.

PART NUMBER	NOMINAL DIAMETER	A		T	C ± 1/64	MATERIAL
		MAX.	MIN.			
5790-173	1-15/16	1.942	1.932	.090	3-3/32	Steel
5790-174	1-15/16	1.942	1.932	.080	3-3/32	Stainless Steel*
5790-107	2"	2.005	1.995	.080	3-3/16	Stainless Steel*
5790-108	2"	2.005	1.995	.080	3-3/16	Aluminum
5790-109	2"	2.005	1.995	.083	3-3/16	Steel
5790-175	2-1/16	2.067	2.057	.080	3-3/16	Aluminum
5790-176	2-1/16	2.067	2.057	.090	3-3/16	Steel
5790-177	2-1/16	2.067	2.057	.080	3-3/16	Stainless Steel*
5790-110	2-1/8	2.130	2.120	.090	3-1/4	Steel
5790-111	2-1/8	2.130	2.120	.080	3-1/4	Aluminum
5790-112	2-1/8	2.130	2.120	.080	3-1/4	Stainless Steel*
5790-113	2-1/8	2.130	2.120	.080	3-1/4	Brass
5790-114	2-11/64	2.171	2.165	.060	3-19/64	Steel
5790-115	2-1/4	2.255	2.245	.080	3-9/16	Stainless Steel*
5790-116	2-1/4	2.255	2.245	.080	3-9/16	Aluminum
5790-117	2-1/4	2.255	2.245	.083	3-9/16	Steel
5790-146	2-3/8	2.380	2.370	.080	3-7/8	Stainless Steel*
5790-178	2-3/8	2.380	2.370	.080	3-7/8	Aluminum
5790-179	2-3/8	2.380	2.370	.090	3-7/8	Steel
5790-118	2-1/2	2.505	2.495	.080	4-5/32	Stainless Steel*
5790-119	2-1/2	2.505	2.495	.080	4-5/32	Aluminum
5790-120	2-1/2	2.505	2.495	.083	4-5/32	Steel
5790-180	2-5/8	2.630	2.620	.080	4-1/4	Aluminum
5790-181	2-5/8	2.630	2.620	.090	4-1/4	Steel
5790-182	2-5/8	2.630	2.620	.080	4-1/4	Stainless Steel*
5790-121	2-3/4	2.755	2.745	.080	4-1/2	Stainless Steel*
5790-122	2-3/4	2.755	2.745	.080	4-1/2	Aluminum
5790-123	2-3/4	2.755	2.745	.083	4-1/2	Steel
5790-124	2-53/64	2.838	2.832	.060	4-45/64	Steel
5790-125	2-7/8	2.880	2.870	.080	4-3/4	Stainless Steel*
5790-126	2-7/8	2.880	2.870	.080	4-3/4	Aluminum
5790-127	2-7/8	2.880	2.870	.090	4-3/4	Steel
5790-128	3"	3.005	2.995	.080	5"	Stainless Steel*
5790-129	3"	3.005	2.995	.080	5"	Aluminum
5790-130	3"	3.005	2.995	.083	5"	Steel
5790-142	3-1/16	3.065	3.055	.090	4"	Steel
5790-143	3-3/16	3.192	3.182	.080	5-1/2	Stainless Steel*
5790-183	3-3/16	3.192	3.182	.080	5-1/2	Aluminum
5790-184	3-3/16	3.192	3.182	.090	5-1/2	Steel
5790-185	3-1/4	3.255	3.245	.125	5-1/2	Aluminum
5790-144	3-1/4	3.255	3.245	.134	5-1/2	Steel
5790-188	3-1/2	3.505	3.495	.120	6"	Steel
5790-187	3-1/2	3.505	3.495	.125	6"	Aluminum
5790-145	3-1/2	3.505	3.495	.134	6"	Steel

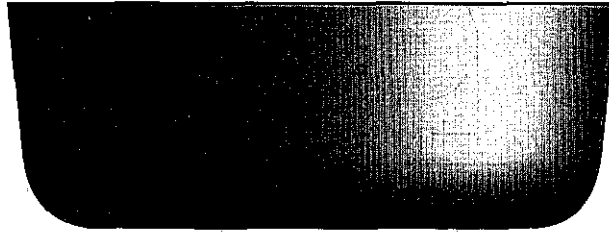
*300 Series Stainless Steel

SEASTROM Manufacturing Co., Inc.
456 Seastrom Street • Twin Falls, Idaho 83301

1•800•634•2356
Fax (208) 734•7222

- Solder Lugs
- Spring Clips
- Spring Washers
- Shoulder Washers
- Stand Off Spacers
- Flat Round Washers - Metallic
- Flat Round Washers - Non-Metallic
- O-Rings
- Retaining Rings
- Lockwashers, Retention Washers & Push-on Nuts
- Clamps & Brackets
- Expansion Plugs
- Ground Straps, Bus Bars & Term. Blocks
- Tab & Notch Washers
- Misc. Washers & Tags
- Solid State Insulators
- Military Standards
- Custom Parts
- Engineering Tables
- Num. & Alpha. Index of Parts

EXPANSION PLUGS



TYPE 5791 TAPERED CUP STYLE EXPANSION PLUGS

A. HOLE PREPARATION

1. Recommended hole diameter = "D" Max. A plus .003.
2. Hole should have a finish 100 microinches or smoother.
3. Hole should be round within .002 T.I.R.

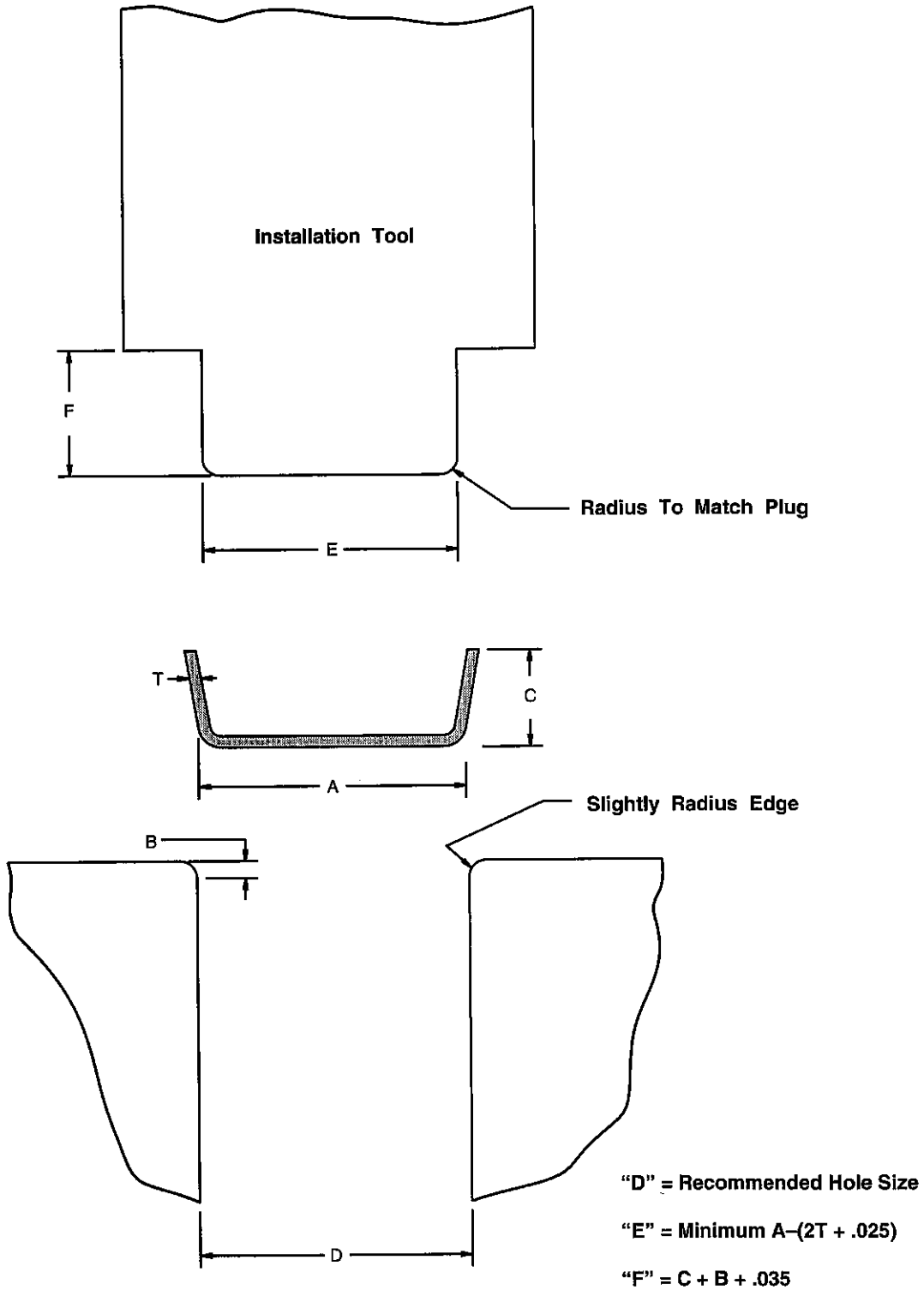
B. INSTALLATION

1. Plugs should be driven from the inside bottom, not from the rim of the cup. (See figure — showing detail of hole and driving tool.)
2. If a gasket sealant is not used, lubricate the plug and hole with oil or grease before inserting.
3. Plugs should be driven square with the hole. The shoulder on the driving tool should be bottomed on the part the plug is being driven into. This will control alignment and proper depth insertion.
4. Plugs must not touch the bottom of a counterbored hole; this may distort the plug and cause leaking.

C. CAUTION

1. Barrel plating may nick the sides of these cups and destroy their sealing surface.
2. This data has been obtained from numerous sources, including "in house" testing. While we believe it to be valid, we do not assume any responsibility for its use due to circumstances which may vary widely between users.

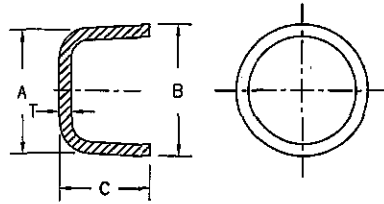
EXPANSION PLUGS (Continued)



INSTALLATION TOOL FOR TAPERED CUP STYLE EXPANSION PLUGS

EXPANSION PLUGS STEEL

Custom Sizes Available . . . See Last Page of This Section



NOTE: Unless stated, all catalog parts are supplied without finish. See page 545 for specifying finishes.

PART NUMBER	NOMINAL PLUG DIA.	A		B		C ±.020	T
		MIN.	MAX.	MIN.	MAX.		
5791-1	9/32	.271	.281	.286	.289	.172	.036
5791-26	5/16	.302	.312	.317	.320	.168	.036
5791-27	11/32	.334	.344	.349	.352	.172	.036
5791-2	3/8	.365	.375	.381	.384	.240	.048
5791-28	13/32	.396	.406	.412	.415	.240	.048
5791-3	7/16	.428	.438	.444	.447	.240	.048
5791-4	15/32	.459	.469	.475	.478	.240	.048
5791-5	1/2	.490	.500	.506	.509	.380	.048
5791-6	17/32	.521	.531	.537	.540	.380	.048
5791-24	35/64	.544	.554	.560	.565	.210	.032
5791-7	9/16	.552	.562	.568	.571	.380	.048
5791-8	19/32	.584	.594	.600	.603	.380	.048
5791-9	5/8	.615	.625	.631	.634	.380	.048
5791-10	21/32	.646	.656	.662	.665	.380	.048
5791-11	11/16	.678	.688	.694	.697	.380	.048
5791-12	23/32	.709	.719	.725	.728	.380	.048
5791-13	3/4	.740	.750	.756	.759	.380	.048
5791-33	13/16	.802	.812	.818	.821	.500	.048
5791-14	7/8	.865	.875	.881	.884	.500	.048
5791-15	59/64	.917	.927	.933	.936	.500	.048
5791-16	15/16	.928	.938	.944	.947	.500	.048
5791-17	1"	.990	1.000	1.006	1.009	.500	.048
5791-25	1-1/16	1.052	1.062	1.069	1.073	.500	.048
5791-29	1-1/8	1.115	1.125	1.132	1.136	.500	.048
5791-18	1-3/16	1.178	1.188	1.195	1.199	.500	.048
5791-30	1-1/4	1.240	1.250	1.257	1.261	.250	.060
5791-19	1-1/4	1.240	1.250	1.257	1.261	.500	.048
5791-34	1-5/16	1.302	1.312	1.319	1.323	.500	.048
5791-20	1-3/8	1.365	1.375	1.382	1.386	.500	.048
5791-31	1-7/16	1.428	1.438	1.445	1.449	.500	.048
5791-21	1-1/2	1.490	1.500	1.507	1.511	.500	.048
5791-32	1-5/8	1.615	1.625	1.633	1.637	.500	.048
5791-22	1-3/4	1.740	1.750	1.758	1.762	.500	.048
5791-23	1-7/8	1.865	1.875	1.883	1.887	.500	.048
5791-35	2"	1.990	2.000	2.008	2.012	.500	.048



NEED SOMETHING CUSTOM?

See our custom parts section beginning on page 539. Use our FAX quote cover sheet and blank print to design the exact part you need and fax it to us. We'll give it our immediate attention.



Seastrom[®]

MANUFACTURERS OF QUALITY CUSTOM AND STANDARD PARTS SINCE 1928

HOW TO REQUEST A FAX QUOTE:

CUSTOM EXPANSION PLUGS

If your application requires a custom expansion plug with dimensions not listed in this catalog, simply photocopy the adjoining page, fill in all necessary dimensions, and fax it to us at 208-734-7222. It's that simple!

Seastrom Manufacturing can manufacture virtually any expansion plug you require.

For more information on expansion plug applications, hole preparation and installation, please refer to the front of the Expansion Plug Section.

If the custom configuration you require is different than shown on the adjoining page, please refer to the custom parts section for a fax quote cover sheet and a blank print to sketch your own design.

EXAMPLE

A Min.:	<u>.872</u>	B Min.:	_____
A Max.:	<u>.878</u>	B Max.:	_____
C.:	<u>1-3/32</u>	T.:	<u>.080</u>

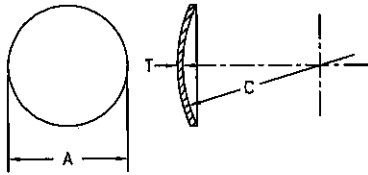
If we can answer any questions concerning your custom expansion plug needs, please feel free to call us today at 1-800-634-2356.

FAX QUOTE

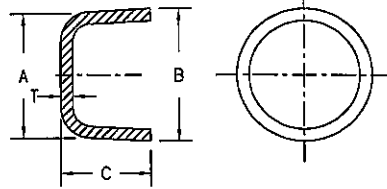
CUSTOM EXPANSION PLUGS

PLEASE FAX TO:

SEASTROM MANUFACTURING COMPANY, INC. 208•734•7222
ATTENTION: Inside Sales



Concave Style



Tapered Cup Style

(Circle one)

DATE _____

A Min.: _____	B Min.: _____		
A Max.: _____	B Max.: _____	C: _____	T: _____

UNLESS OTHERWISE SPECIFIED ALL DIMENSIONS WILL BE TO CATALOG TOLERANCES.*

Material: _____ Deburring Required? Yes No

Plating: _____

Other Requirements: _____

From: _____ Title: _____

Company: _____

Address: _____ City: _____ State: _____ Zip: _____

Phone: _____ Fax: _____

*** See Pages 551 and 552 for commercial thickness tolerances.**

Please Quote the following:	<i>For Seastrom Use</i>	
QUANTITY	PRICE	DELIVERY
Estimated Yearly Usage:		

DO NOT TEAR OUT ... PLEASE PHOTOCOPY