

Clamps Incorporated
5960 American Road East
Toledo, OH 43612
Ph / 800.837.0141
Ph / 419.729.2141
Fx / 419.729.5776
www.clampsinc.com



Clamps Incorporated was founded in 1957 by the late Walter F. Riker who designed and patented the heavy-duty guillotine style exhaust clamp for used in the heavy-duty truck and off-road equipment markets. The success of the guillotine style clamp and Clamps Incorporated represents years of dedicated effort by the employees and the Riker family, past and present, that has made the company a world leader in the heavy-duty exhaust clamp marketplace.

Quality begins with the standards set for ourselves. To insure total customer satisfaction, Clamps Incorporated maintains an ANSI / ASQ ISO 9001: 2008 Certification. The quality system with a continued improvement program and surveillance audits conducted by NFS-ISR, assures customers that they will receive a world class quality product.

Quality Policy
To achieve total customer satisfaction by understanding our customer needs through continual improvement of product, services and quality management systems

 **NSF International Strategic Registrations**
789 North Dixboro Road, Ann Arbor, Michigan 48105
(888) NSF-9000 | www.nsf-isr.org

Certificate of Registration

This certifies that the Quality Management System of

Clamps Incorporated

5960 American Road East
Toledo, Ohio, 43612, United States

has been assessed by NSF-ISR and found to be in conformance to the following standard(s):

ISO 9001:2008

Scope of Registration:
Manufacture of Muffler Clamps, Industrial Grade U-Bolts, Wire Forms and Stampings for the Automotive, Heavy Duty Truck and Off-Road Equipment Markets

Exclusions: 7.3, Design and Development

Certificate Number:	C0094848-IS1
Certificate Issue Date:	29-APR-2012
Registration Date:	27-OCT-2012
Expiration Date *:	26-OCT-2015


William Niedzwiecki,
President & General Manager,
NSF-ISR, Ltd.

Authorized Registration and/or Accreditation Marks. This certificate is property of NSF-ISR and must be returned upon request. *Company is audited for conformance at regular intervals. To verify registrations call (800) NSF-9000 or visit our web site at www.nsf-isr.org



Index

Contents	PFD
<u>Description</u>	Page Number
Quick Product Guide	4
U-Series Clamps	5
Single Edge, Guillotine Saddle, 3/8-16 Round U-Bolt & (2) Serrated Flange Nuts	
UF Series Clamps	6
Single Edge, Guillotine Saddle, 3/8-16 Flat U-Bolt & (2) Serrated Flange Nuts	
UDO Series Clamps	7
Double Edge, Open End Saddle, 3/18-16 Round U-Bolt & (2) Serrated Flange Nuts	
UFDO Series Clamps	8
Double Edge, Open End Saddle, 3/18-16 Flat U-Bolt & (2) Serrated Flange Nuts	
UD Series Clamps	9
Double Edge, Closed End Saddle, 3/18-16 Round U-Bolt & (2) Serrated Flange Nuts	
UFD Series Clamps	10
Double Edge, Closed End Saddle, 3/18-16 Flat U-Bolt & (2) Serrated Flange Nuts	
AUF Series Clamps	11
Cast Aluminum Saddle, 3/18-16 Flat U-Bolt & (2) Serrated Flange Nuts	
AC Series Clamps	12
Double Edge, Open End Saddle, 1/4-20 Round U-Bolt & (2) Hex Nuts	
PC Series Clamps	13
Double Edge, Open End Saddle, 5/16-18 Round U-Bolt & (2) Hex Nuts	
CI Series Clamps	14
FBC Series - Flat Band Clamps	
TAS Series - Narrow Band Clamps	
TLC Series - Preformed Lap Joint Clamps	
Torca® Series Clamps	15
EBC Series - Torca Easy Seal® Flat Band Clamps	
NBC Series - Torca AccuSeal® Narrow Band Clamps	
PFC Series - Torca TorcSeal® Preformed Lap Joint Clamps	
BCE Series	16
Flat Band Strap Clamps	
BCEM Series	17
Flat Band Strap Clamps w/Mounting Bracket	
Hardware	18
Hex Nuts, Flange Nuts, Lock Washers	
Other Information	
Quality Policy & ISO Certificate of Registration	Inside Front Cover
Custom Made U-Bolts & Die Stampings	19
Custom Bent / Threaded Bolts	20
To Be Determined	21
Material / Finish / Package Options	22
Sellers Terms & Conditions of Sales	23 - 26
Warranty	25 - 26
Clamps Incorporated Contacts	Inside Back Cover
	27

Index

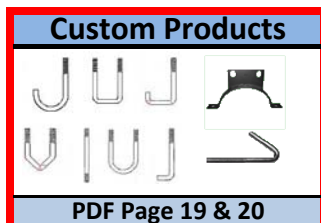
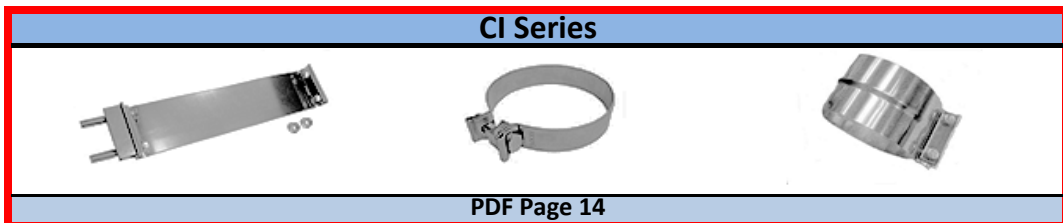
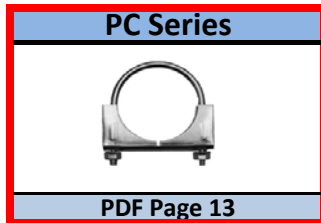
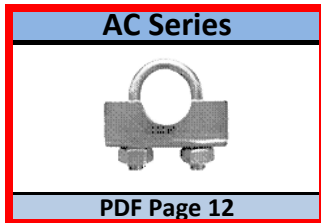
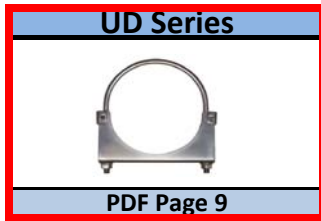
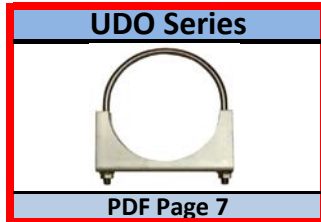
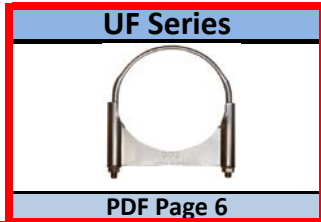
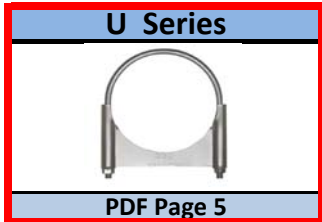
Index

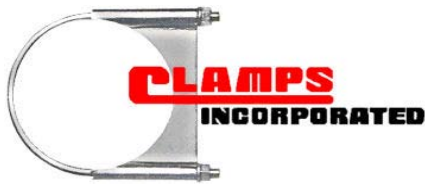


Quick Product Guide

Quick Product Guide

Quick Product Guide

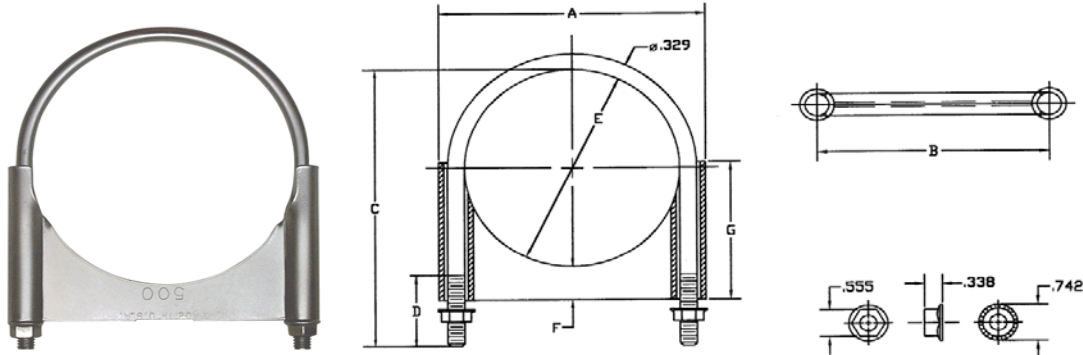




U Series Clamps

Single Edge, Guillotine Saddle, 3/8-16 Round U-Bolt and (2) Serrated Flange Nuts

Made in the U.S.A



U Series Clamps Includes: 3/8-16 Round U-Bolt, Single Edge, Guillotine Saddle and (2) Serrated Flange Nuts

Size (Inches)	Basic Part Number	A	B	C	D	E	F	G	H	Saddle Material Gauge	Weight Each (lbs)
		Inches									
2.00	U200	3.10	2.50	3.67	1.50	2.17	0.69	1.89		13	0.45
2.25	U225	3.35	2.75	3.79	1.50	2.42	0.69	2.00		13	0.50
2.50	U250	3.61	3.00	4.05	1.50	2.67	0.72	2.14		13	0.53
2.75	U275	3.86	3.25	4.29	1.50	2.92	0.69	2.25		13	0.56
3.00	U300	4.11	3.50	4.54	1.50	3.17	0.66	2.37		13	0.60
3.25	U325	4.34	3.75	4.79	1.50	3.42	0.69	2.50		13	0.65
3.50	U350	4.61	4.00	5.04	1.50	3.67	0.68	2.69		13	0.72
3.88	U378	4.91	4.25	5.17	1.50	3.92	0.69	2.75		11	0.90
4.00	U400	5.14	4.50	5.85	1.50	4.17	0.70	2.91		13	0.82
4.44	U476	5.49	4.81	5.85	1.50	4.48	0.87	3.24		11	1.09
4.50	U450	5.61	5.00	6.17	1.50	4.67	0.73	3.22		11	1.11
5.00	U500	6.19	5.50	6.79	1.50	5.17	0.78	3.37		11	1.24
5.50	U550	6.67	6.00	7.10	1.50	5.67	0.67	2.49		11	1.14
6.00	U600	7.18	6.50	7.48	1.50	6.17	0.80	2.62		11	1.24

Note We reserve the right to change specifications and/or designs without prior notice or obligation

- Tolerances: 2 Pl. Dec. \pm 0.060
3 Pl. Dec. \pm 0.030
- Material: U-Bolt - C1018 - 3/8-16 UNC-2A Threads
Saddle - 1001-H.R.P.O.
Nuts - Serrated Flanged, Grade 2
- Optional Material: 304 Stainless Steel
- Standard Packs: ●Bulk / Unassembled ●Assembled / Bulk ●Packaged / Bulk / Individual Poly Bag
●Ten Pack Packaged / Individual Poly Bag ●Fifty Pack Packaged / Individual Poly Bag
●Other Packs Available on Request
- Optional Finishes: ●Plain ●Clear Zinc ●Yellow Zinc ●Black Zinc ●Black Paint ●Chrome

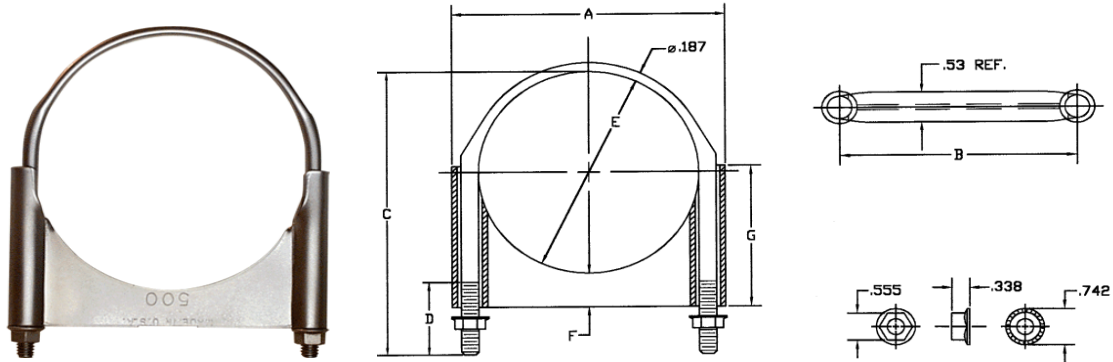
Clamps Incorporated 5960 American Road East Toledo, OH 43612
Ph / 800-837-0141 Ph / 419-729-2141 Fx / 419-729-5776



UF Series Clamps

Single Edge, Guillotine Saddle, 3/8-16 Flat U-Bolt and (2) Serrated Flange Nuts

Made in the U.S.A



UF Series Clamps Includes: 3/8-16 Round U-Bolt, Single Edge, Guillotine Saddle and (2) Serrated Flange Nuts

Size (Inches)	Basic Part Number	A	B	C	D	E	F	G	H	Saddle Material Gauge	Weight Each (lbs)
		Inches									
2.00	UF200	3.10	2.50	3.81	1.50	2.17	0.69	1.89		13	0.45
2.25	UF225	3.35	2.75	3.94	1.50	2.42	0.69	2.00		13	0.50
2.50	UF250	3.61	3.00	4.19	1.50	2.67	0.72	2.14		13	0.53
2.75	UF275	3.86	3.25	4.36	1.50	2.92	0.69	2.25		13	0.56
3.00	UF300	4.11	3.50	4.54	1.50	3.17	0.66	2.37		13	0.60
3.25	UF325	4.34	3.75	4.79	1.50	3.42	0.69	2.50		13	0.65
3.50	UF350	4.61	4.00	5.04	1.50	3.67	0.68	2.69		13	0.72
4.00	UF400	5.14	4.50	5.85	1.75	4.17	0.70	2.91		13	0.82
4.50	UF450	5.61	5.00	6.31	1.50	4.67	0.73	3.22		11	1.11
5.00	UF500	6.19	5.50	6.79	1.75	5.17	0.78	3.37		11	1.24
5.50	UF550	6.67	6.00	7.10	1.50	5.67	0.67	2.49		11	1.14
6.00	UF600	7.18	6.50	7.71	1.50	6.17	0.80	2.62		11	1.24

Note We reserve the right to change specifications and/or designs without prior notice or obligation

Tolerances: 2 Pl. Dec. \pm 0.060
3 Pl. Dec. \pm 0.030

Material: U-Bolt - C1018 - 3/8-16 UNC-2A Threads
Saddle - 1001-H.R.P.O.
Nuts - Serrated Flanged, Grade 2

Optional Material: 304 Stainless Steel

Standard Packs: ● Bulk / Unassembled ● Assembled / Bulk ● Packaged / Bulk / Individual Poly Bag
● Ten Pack Packaged / Individual Poly Bag ● Fifty Pack Packaged / Individual Poly Bag
● Other Packs Available on Request

Optional Finishes: ● Plain ● Clear Zinc ● Yellow Zinc ● Black Zinc ● Black Paint ● Chrome

UF-Series Clamps

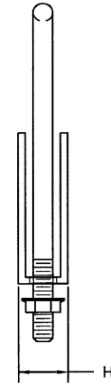
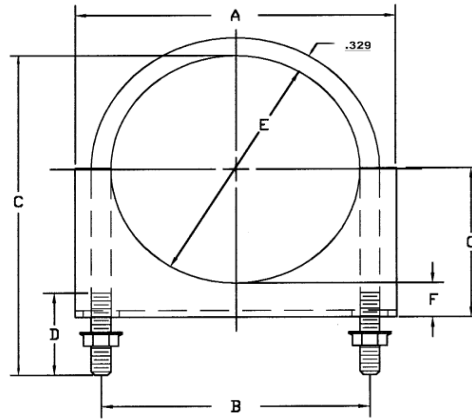
UF-Series Clamps



UDO Series Clamps

Double Edge, Open End Saddle, 3/8-16 Round U-Bolt and (2) Serrated Flange Nuts

Made in the U.S.A



UDO Series Clamps Includes: 3/8-16 Round U-Bolt, Double Edge, Open End Saddle and (2) Serrated Flange Nuts

Size (Inches)	Basic Part Number	A	B	C	D	E	F	G	H	Saddle Material Gauge	Weight Each (lbs)
		Inches									
1.50	UDO150	2.88	2.06	2.43	1.00	1.73	0.31	1.17	0.80	11	0.31
1.63	UDO163	2.88	2.12	2.64	1.00	1.79	0.31	1.17	0.80	11	0.33
1.75	UDO175	3.06	2.31	2.81	1.50	1.98	0.33	1.30	0.64	11	0.34
1.88	UDO188	3.19	2.44	2.92	1.50	2.11	0.31	1.36	0.64	11	0.38
2.00	UDO200	3.25	2.50	3.67	1.50	2.17	0.31	1.42	0.64	11	0.41
2.13	UDO213	3.50	2.68	3.72	1.50	2.30	0.37	1.54	0.64	11	0.43
2.25	UDO225	3.50	2.75	3.79	1.50	2.42	0.32	1.55	0.64	11	0.46
2.50	UDO250	3.75	3.00	4.05	1.50	2.67	0.33	1.68	0.64	11	0.50
2.75	UDO275	4.13	3.25	4.29	1.50	2.92	0.32	1.79	0.82	11	0.57
3.00	UDO300	4.38	3.50	4.54	1.50	3.17	0.30	1.90	0.82	11	0.63
3.25	UDO325	4.50	3.75	4.79	1.50	3.42	0.41	2.13	0.82	11	0.72
3.50	UDO350	4.88	4.00	5.04	1.50	3.67	0.56	2.40	0.82	11	0.82
4.00	UDO400	5.38	4.50	5.85	1.50	4.17	0.53	2.50	0.83	11	0.91
4.50	UDO450	6.11	5.00	6.17	1.50	4.67	0.65	2.86	0.83	11	1.10
5.00	UDO500	6.37	5.50	6.79	1.50	5.17	0.53	3.12	0.83	11	1.13
5.50	UDO550	7.25	6.00	7.10	1.50	5.67	0.58	3.32	1.00	11	1.22
6.00	UDO600	7.75	6.50	7.48	1.50	6.17	0.60	3.68	1.00	11	1.35

Note We reserve the right to change specifications and/or designs without prior notice or obligation

- Tolerances: 2 Pl. Dec. \pm 0.060
3 Pl. Dec. \pm 0.030
- Material: U-Bolt - C1018 - 3/8-16 UNC-2A Threads
Saddle - 1001-H.R.P.O.
Nuts - Serrated Flanged, Grade 2
- Optional Material: 304 Stainless Steel
- Standard Packs: ●Bulk / Unassembled ●Assembled / Bulk ●Packaged / Bulk / Individual Poly Bag
●Ten Pack Packaged / Individual Poly Bag ●Fifty Pack Packaged / Individual Poly Bag
●Other Packs Available on Request
- Optional Finishes: ●Plain ●Clear Zinc ●Yellow Zinc ●Black Zinc ●Black Paint ●Chrome

UDO-Series Clamps

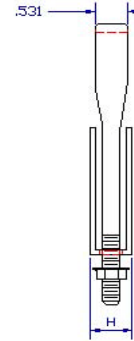
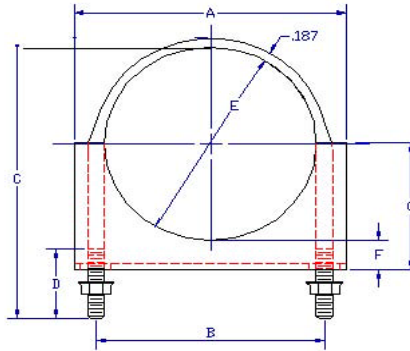
UDO-Series Clamps



UFDO Series Clamps

Double Edge, Open End Saddle, 3/8-16 Flat U-Bolt and (2) Serrated Flange Nuts

Made in the U.S.A



UFDO Series Clamps Includes: 3/8-16 Flat U-Bolt, Double Edge, Open End Saddle and (2) Serrated Flange Nuts

Size (Inches)	Basic Part Number	A	B	C	D	E	F	G	H	Saddle Material Gauge	Weight Each (lbs)
		Inches									
2.00	UFDO200	3.25	2.50	3.82	1.50	2.17	0.31	1.42	0.64	11	0.41
2.25	UFDO225	3.50	2.75	3.94	1.50	2.42	0.32	1.55	0.64	11	0.46
2.50	UFDO250	3.75	3.00	4.19	1.50	2.67	0.33	1.68	0.64	11	0.50
2.75	UFDO275	4.13	3.25	4.36	1.50	2.92	0.32	1.79	0.82	11	0.57
3.00	UFDO300	4.38	3.50	4.54	1.50	3.17	0.30	1.90	0.82	11	0.63
3.50	UFDO350	4.88	4.00	5.04	1.50	3.67	0.56	2.40	0.82	11	0.82
4.00	UFDO400	5.38	4.50	5.85	1.75	4.17	0.53	2.50	0.83	11	0.91
5.00	UFDO500	6.37	5.50	6.79	1.75	5.17	0.53	3.12	0.83	11	1.13
6.00	UFDO600	7.75	6.50	7.71	1.50	6.17	0.58	3.68	1.00	11	1.35

Note We reserve the right to change specifications and/or designs without prior notice or obligation

Tolerances: 2 Pl. Dec. ± 0.060
3 Pl. Dec. ± 0.030

Material: U-Bolt - C1018 - 3/8-16 UNC-2A Threads
Saddle - 1001-H.R.P.O.
Nuts - Serrated Flanged, Grade 2

Optional Material: 304 Stainless Steel

Standard Packs: ● Bulk / Unassembled ● Assembled / Bulk ● Packaged / Bulk / Individual Poly Bag
● Ten Pack Packaged / Individual Poly Bag ● Fifty Pack Packaged / Individual Poly Bag
● Other Packs Available on Request

Optional Finishes: ● Plain ● Clear Zinc ● Yellow Zinc ● Black Zinc ● Black Paint ● Chrome

UFDO-Series Clamps

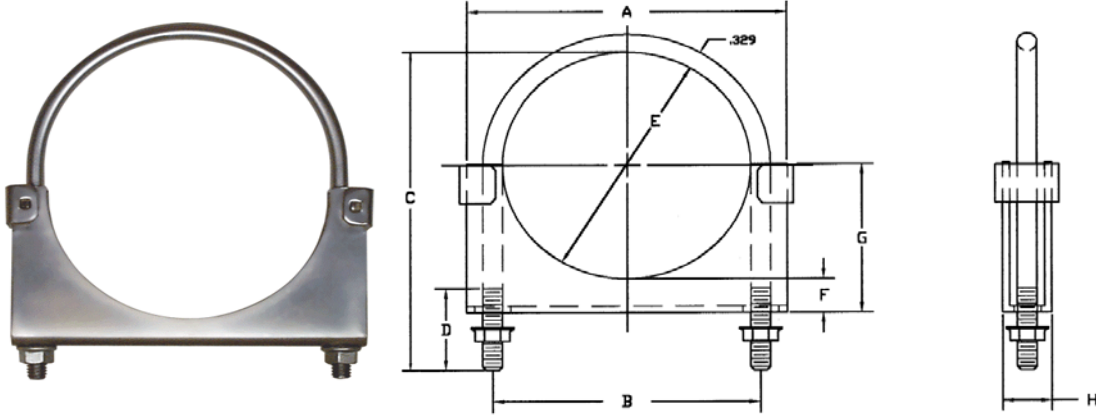
UFDO-Series Clamps



UD Series Clamps

Double Edge, Closed End Saddle, 3/8-16 Round U-Bolt and (2) Serrated Flange Nuts

Made in the U.S.A



UD Series Clamps Includes: 3/8-16 Round U-Bolt, Double Edge, Closed End Saddle and (2) Serrated Flange Nuts

Size (Inches)	Basic Part Number	A	B	C	D	E	F	G	H	Saddle Material Gauge	Weight Each (lbs)
		Inches									
3.00	UD300	4.38	3.50	5.54	1.50	3.17	0.30	1.90	0.82	11	0.71
3.25	UD325	4.50	3.75	4.79	1.50	3.42	0.41	2.12	0.82	11	0.81
3.50	UD350	4.88	4.00	5.04	1.50	3.67	0.56	2.40	0.82	11	0.89
4.00	UD400	5.38	4.50	5.85	1.50	4.17	0.53	2.50	0.83	11	0.98
4.50	UD450	6.12	5.00	6.17	1.50	4.37	0.72	3.02	0.83	11	1.18
5.00	UD500	6.37	5.50	6.79	1.50	5.17	0.53	3.12	0.83	11	1.22
5.50	UD550	7.25	6.00	7.10	1.50	5.67	0.58	3.32	1.00	11	1.36
6.00	UD600	7.75	6.50	7.48	1.50	6.17	0.58	3.68	1.00	11	1.50

Note We reserve the right to change specifications and/or designs without prior notice or obligation

Tolerances: 2 Pl. Dec. \pm 0.060
3 Pl. Dec. \pm 0.030

Material: U-Bolt - C1018 - 3/8-16 UNC-2A Threads
Saddle - 1001-H.R.P.O.
Nuts - Serrated Flanged, Grade 2

Optional Material: 304 Stainless Steel

Standard Packs: ● Bulk / Unassembled ● Assembled / Bulk ● Packaged / Bulk / Individual Poly Bag
● Ten Pack Packaged / Individual Poly Bag ● Fifty Pack Packaged / Individual Poly Bag
● Other Packs Available on Request

Optional Finishes: ● Plain ● Clear Zinc ● Yellow Zinc ● Black Zinc ● Black Paint ● Chrome

UD-Series Clamps

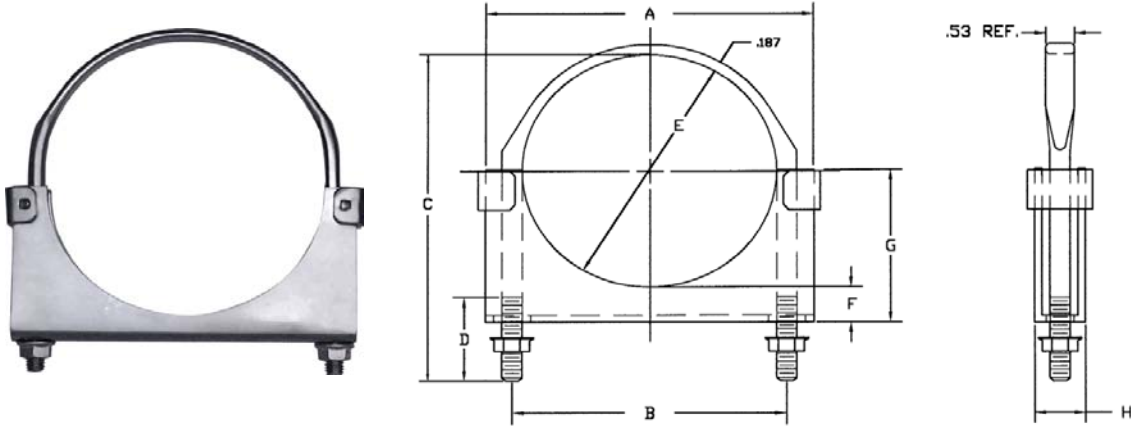
UD-Series Clamps



UFD Series Clamps

Double Edge, Closed End Saddle, 3/8-16 Flat U-Bolt and (2) Serrated Flange Nuts

Made in the U.S.A



UFD Series Clamps Includes: 3/8-16 Flat U-Bolt, Double Edge, Closed End Saddle and (2) Serrated Flange Nuts

Size (Inches)	Basic Part Number	A	B	C	D	E	F	G	H	Saddle Material Gauge	Weight Each (lbs)
		Inches									
3.00	UFD300	4.38	3.50	4.54	1.50	3.17	0.30	1.90	0.82	11	0.71
3.50	UFD350	4.88	4.00	5.04	1.50	3.67	0.56	2.40	0.82	11	0.89
4.00	UFD400	5.38	4.50	5.85	1.75	4.17	0.53	2.50	0.83	11	0.98
4.50	UFD450	6.25	5.00	6.31	1.50	4.17	0.72	3.02	0.83	11	1.18
5.00	UFD500	6.37	5.50	6.79	1.75	5.17	0.53	3.12	0.83	11	1.22
5.50	UFD550	7.25	6.00	7.10	1.50	5.67	0.58	3.37	1.03	11	1.36
6.00	UFD600	7.75	6.50	7.71	1.50	6.17	0.58	3.68	1.00	11	1.50

Note We reserve the right to change specifications and/or designs without prior notice or obligation

Tolerances: 2 Pl. Dec. ± 0.060
3 Pl. Dec. ± 0.030

Material: U-Bolt - C1018 - 3/8-16 UNC-2A Threads
Saddle - 1001-H.R.P.O.
Nuts - Serrated Flanged, Grade 2

Optional Material: 304 Stainless Steel

Standard Packs: ●Bulk / Unassembled ●Assembled / Bulk ●Packaged / Bulk / Individual Poly Bag
●Ten Pack Packaged / Individual Poly Bag ●Fifty Pack Packaged / Individual Poly Bag
●Other Packs Available on Request

Optional Finishes: ●Plain ●Clear Zinc ●Yellow Zinc ●Black Zinc ●Black Paint ●Chrome

UFD-Series Clamps

UFD-Series Clamps

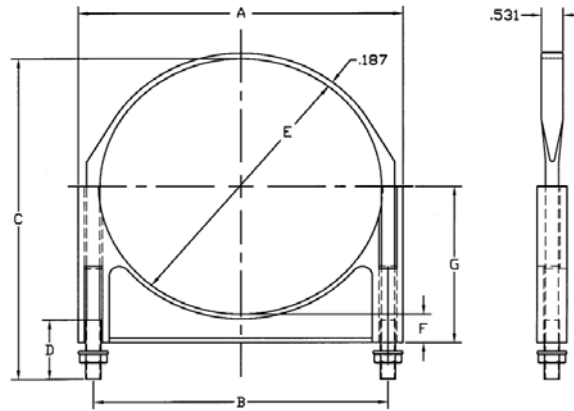
Clamps Incorporated 5960 American Road East Toledo, OH 43612
Ph / 800-837-0141 Ph / 419-729-2141 Fx / 419-729-5776



AUF Series Clamps

Heavy Duty Cast Aluminum Saddle, 3/8-16 Flat U-Bolt and (2) Serrated Flange Nuts

Saddle Made in China U-Bolt Made in U.S.A



AUF Series Clamps Includes: 3/8-16 Flat U-Bolt, Heavy Duty Cast Aluminum Saddle and (2) Serrated Flange Nuts

Size (Inches)	Basic Part Number	A	B	C	D	E	F	G	H	Saddle Material Gauge	Weight Each (lbs)
		Inches									
7.00	AUF700	8.12	7.50	8.83	1.50	7.10	0.75	4.25		NA	1.02
8.00	AUF800	9.12	8.50	9.69	1.50	8.10	0.75	4.25		NA	1.10

Note We reserve the right to change specifications and/or designs without prior notice or obligation

Tolerances: 2 Pl. Dec. ± 0.060
3 Pl. Dec. ± 0.030

Material: U-Bolt - C1018 - 3/8-16 UNC-2A Threads
Saddle - Cast Aluminum
Nuts - Serrated Flanged, Grade 2

Standard Packs: ● Bulk / Unassembled ● Assembled / Bulk ● Packaged / Bulk / Individual Poly Bag
● Ten Pack Packaged / Individual Poly Bag ● Fifty Pack Packaged / Individual Poly Bag
● Other Packs Available on Request

Optional Finishes: ● Plain ● Clear Zinc ● Black Paint ● Chrome

AUF-Series Clamps

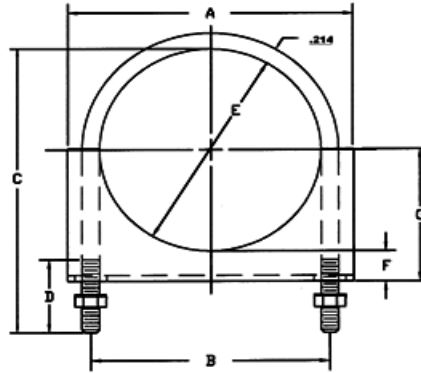
AUF-Series Clamps



AC Series Clamps

Double Edge, Open End Saddle, 1/4-20 Round U-Bolt and (2) Hex Nuts

Made in the U.S.A



AC Series Clamps Includes: 1/4-20 Round U-Bolt, Double Edge, Open End Saddle and (2) Hex Nuts

Size (Inches)	Basic Part Number	A	B	C	D	E	F	G	H	Saddle Material Gauge	Weight Each (lbs)
		Inches									
0.50	AC050	1.56	0.81	1.45	0.75	0.59	0.33	0.62		13	0.14
0.63	AC063	1.56	1.00	1.45	0.75	0.67	0.29	0.62		13	0.14
0.75	AC075	1.56	1.08	1.45	0.75	0.85	0.20	0.62		13	0.14
1.00	AC100	1.82	1.34	1.50	0.75	1.12	0.20	0.76		13	0.16

Note We reserve the right to change specifications and/or designs without prior notice or obligation

AC-Series Clamps

AC-Series Clamps

Tolerances: 2 Pl. Dec. ± 0.060
3 Pl. Dec. ± 0.030

Material: U-Bolt - C1018 - 1/4-20 UNC-2A Threads
Saddle - 1008 - 1010-H.R.P.O.
Nuts - Hex Head

Standard Packs: ●Bulk / Unassembled ●Assembled / Bulk ●Packaged / Bulk / Individual Poly Bag
●Ten Pack Packaged / Individual Poly Bag ●Fifty Pack Packaged / Individual Poly Bag
●Other Packs Available on Request

Optional Finishes: ●Plain ●Clear Zinc ●Yellow Zinc

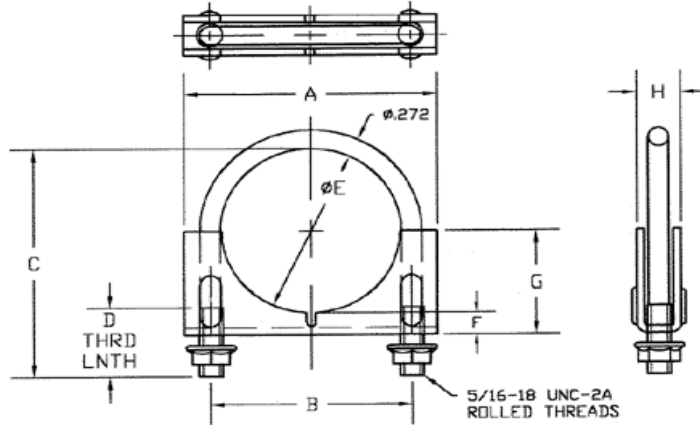
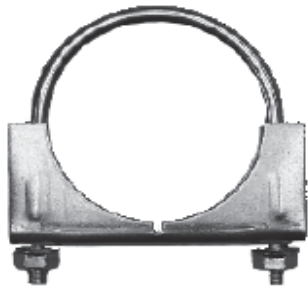
Clamps Incorporated 5960 American Road East Toledo, OH 43612
Ph / 800-837-0141 Ph / 419-729-2141 Fx / 419-729-5776



PC Series Clamps

Double Edge, Open End Saddle, 5/16-18 Round U-Bolt and (2) Hex Nuts

Made in the U.S.A



PC Series Clamps Includes: 5/16-18 Round U-Bolt, Double Edge, Open End Saddle and (2) Hex Nuts

Size (Inches)	Basic Part Number	A	B	C	D	E	F	G	H	Saddle Material Gauge	Weight Each (lbs)
		Inches									
*1.13	PC113	2.31	1.63	2.30	1.00	1.36	0.26	0.93	0.56	13	0.19
*1.25	PC125	2.44	1.75	2.39	1.00	1.48	0.26	0.99	0.56	13	0.23
*1.38	PC138	2.56	1.88	2.54	1.00	1.61	0.26	1.05	0.56	13	0.25
1.50	PC150	2.69	1.94	2.74	1.00	1.67	0.34	1.16	0.59	13	0.28
1.63	PC163	2.88	2.06	2.81	1.00	1.79	0.30	1.19	0.59	13	0.29
1.75	PC175	2.88	2.19	3.14	1.00	1.92	0.31	1.25	0.59	13	0.31
1.88	PC188	3.00	2.31	3.17	1.00	2.04	0.31	1.31	0.59	13	0.32
2.00	PC200	3.13	2.44	3.33	1.00	2.17	0.27	1.36	0.59	13	0.34
2.13	PC213	3.38	2.56	3.39	1.00	2.23	0.38	1.51	0.59	13	0.35
2.25	PC225	3.38	2.69	3.58	1.00	2.42	0.31	1.50	0.59	13	0.36
2.50	PC250	3.63	2.94	3.83	1.25	2.67	0.31	1.63	0.59	13	0.40
*2.75	PC275	4.13	3.31	4.12	1.25	2.92	0.32	1.80	0.82	13	0.48
*3.00	PC300	4.38	3.56	4.87	1.50	3.17	0.30	1.90	0.82	13	0.62

Note We reserve the right to change specifications and/or designs without prior notice or obligation

* No notch or stiffening ribs on these sizes

Tolerances: 2 Pl. Dec. ± 0.060
3 Pl. Dec. ± 0.030

Material: U-Bolt - C1018 - 5/16-18 UNC-2A Threads
Saddle - 10081- 1010-H.R.P.O.
Nuts - Hex Head

Standard Packs: ●Bulk / Unassembled ●Assembled / Bulk ●Packaged / Bulk / Individual Poly Bag
●Ten Pack Packaged / Individual Poly Bag ●Fifty Pack Packaged / Individual Poly Bag
●Other Packs Available on Request

Optional Finishes: ●Plain ●Clear Zinc ●Yellow Zinc ●Black Zinc ●Black Paint ●Chrome

Clamps Incorporated 5960 American Road East Toledo, OH 43612
Ph / 800-837-0141 Ph / 419-729-2141 Fx / 419-729-5776

PC-Series Clamps

PC-Series Clamps



CI Series Band Clamps

- FBC Series Flat Band Clamp
- TAS Series Narrow Band Clamp
- TLC Series Preformed Lap Joint Clamp

FBC Series:

Made in China

Size (Inches)	Part Number	Weight Each (lbs)
2.00	FBC200	0.80
2.25	FBC225	0.82
2.50	FBC250	0.83
3.00	FBC300	0.85
3.50	FBC350	0.87
4.00	FBC400	0.90
5.00	FBC500	0.95



- Flat Band Clamp
- Factory Attached Hardware
- Double Bolt Installation
- 304 Polished Stainless Steel Band

TAS Series:

Made in China

Size (Inches)	Part Number	Weight Each (lbs)
2.00	TAS200	0.43
2.25	TAS225	0.45
2.50	TAS250	0.47
2.75	TAS275	0.50
3.00	TAS300	0.52
3.50	TAS350	0.55
4.00	TAS400	0.59
5.00	TAS500	0.67
6.00	TAS600	0.75



- Narrow Band Clamp
- Factory Attached Hardware
- Single Bolt Installation
- 304 Polished Stainless Steel Band

TLC Series:

Made in China

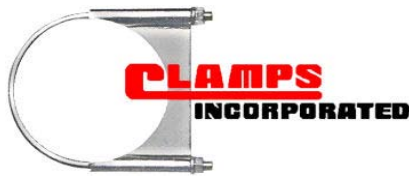
Size (Inches)	Part Number	Weight Each (lbs)
2.00	TLC200	0.80
2.25	TLC225	0.81
2.50	TLC250	0.82
2.75	TLC275	0.83
3.00	TLC300	0.85
3.50	TLC350	0.87
4.00	TLC400	0.89
5.00	TLC500	0.92
6.00	TLC600	0.99



- Preformed Lap Joint Clamp
- Factory Attached Hardware
- Double Bolt Installation
- 304 Polished Stainless Steel Band

Note We reserve the right to change specifications and/or designs without prior notice or obligation

Clamps Incorporated 5960 American Road East Toledo, OH 43612
 Ph / 800-837-0141 Ph / 419-729-2141 Fx / 419-729-5776



Torca® Series Clamps

- EBC Series Torca Easy Seal® Flat Band Clamps
- NBC Series Torca AccuSeal® Narrow Band Clamps
- PFC Series Torca TorcSeal® Preformed Lap Joint Clamps

EBC Series:

Made In U.S.A

Size (Inches)	Part Number	Weight Each (lbs)
2.00	EBC200	0.80
2.25	EBC225	0.82
2.50	EBC250	0.83
2.75	EBC275	0.84
3.00	EBC300	0.85
3.50	EBC350	0.87
4.00	EBC400	0.90
4.50	EBC450	0.92
5.00	EBC500	0.95
6.00	EBC600	0.99



- Flat Band Clamp
- 304 Polished Stainless Steel Band

NBC Series:

Made In U.S.A

Size (Inches)	Part Number	Weight Each (lbs)
1.75	NBC175	0.41
2.00	NBC200	0.43
2.25	NBC225	0.45
2.50	NBC250	0.47
2.75	NBC275	0.50
3.00	NBC300	0.52
3.50	NBC350	0.55
4.00	NBC400	0.59
5.00	NBC500	0.67
6.00	NBC600	0.75



- Narrow Band Clamp
- 430 Bright Stainless Steel Band

PFC Series:

Made In U.S.A

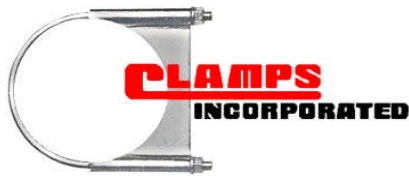
Size (Inches)	Stainless Steel Part Number	Aluminized Steel Part Number	Weight Each (lbs)
2.00	PFC200	NA	0.80
2.25	PFC225	NA	0.81
2.50	PFC250	NA	0.82
2.75	PFC275	NA	0.83
3.00	PFC300	NA	0.85
3.50	PFC350	NA	0.87
4.00	PFC400	PFC400ALZ	0.89
4.50	PFC450	NA	0.89
5.00	PFC500	PFC500ALZ	0.94
6.00	PFC600	PFC600ALZ	0.99



- Preformed Lap Joint Clamp
- 304 Polished Stainless Steel Band
- Aluminized Steel

Note We reserve the right to change specifications and/or designs without prior notice or obligation

Clamps Incorporated 5960 American Road East Toledo, OH 43612
Ph / 800-837-0141 Ph / 419-729-2141 Fx / 419-729-5776

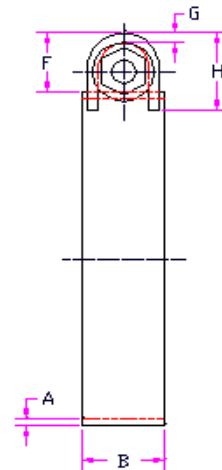
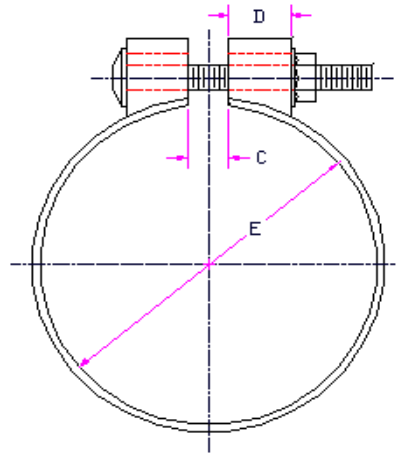


BCE Series Flat Band Strap Clamps

Made in U.S.A.



Size (Inches)	Basic Part Number	Weight Each (lbs)
2.00	BCE200	0.51
2.13	BCE213	0.52
2.25	BCE225	0.53
2.50	BCE250	0.57
2.75	BCE275	0.58
3.00	BCE300	0.60
3.25	BCE325	0.65
3.50	BCE350	0.67
3.88	BCE388	0.70
4.00	BCE400	0.72
4.25	BCE425	0.73
4.50	BCE450	0.78
5.00	BCE500	0.83
5.50	BCE550	0.90
6.00	BCE600	0.95
7.00	BCE700	1.04
8.00	BCE800	1.18



Note We reserve the right to change specifications and/or designs without prior notice or obligation

Tolerances: 2 Pl. Dec. ± 0.060
3 Pl. Dec. ± 0.030

Material: Carriage Bolt - 3/8-16 Grade 5 Zinc
Band - C1008- 1010 H.R.P.O
Nut - Serrated Flanged
Clip - C1018

Standard Packs: ●Bulk / Unassembled ●Assembled / Bulk ●Packaged / Bulk / Individual Poly Bag
●Other Packs Available on Request

Optional Finishes: ●Plain ●Clear Zinc ●Yellow Zinc ●Black Zinc ●Black Paint ●Chrome

BCE-Series Flat Band Strap Clamps

BCE-Series Flat Band Strap Clamps

Clamps Incorporated 5960 American Road East Toledo, OH 43612
Ph / 800-837-0141 Ph / 419-729-2141 Fx / 419-729-5776



BCEM Series Flat Band Strap Clamps w/ Mounting Bracket

Made In U.S.A.

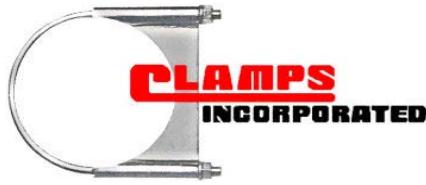


Size (Inches)	Basic Part Number	Weight Each (lbs)
4.00	BCEM400	1.01
5.00	BCEM500	1.13
6.00	BCEM600	1.39

Drawing Not Available

Note We reserve the right to change specifications and/or designs without prior notice or obligation

- Tolerances: 2 Pl. Dec. ± 0.060
 3 Pl. Dec. ± 0.030
- Material: Carriage Bolt - 3/8-16 Grade 5 Zinc
 Band - C1008- 1010 H.R.P.O
 Nut - Serrated Flanged
 Clip - C1018
- Standard Packs: Bulk / Unassembled; Assembled / Bulk; Packaged / Bulk / Individual Poly Bag;
 Ten Pack Packaged / Individual Poly Bag; Fifty Pack Packaged / Individual Poly Bag
- Other Packs Available on Request
- Optional Finishes: Plain; Clear Zinc; Yellow Zinc; Black Zinc; Black Paint; Chrome



Hex Nuts / Flange Nut / Lock Washers

Hex Nuts

Made in China



Size	Finish	Part Number
5/16 - 18	Plain	HNS0516
	Clear Zinc	HNS1516
	Yellow Zinc	HNSY516
	Black Zinc	HNSB516
	Stainless	HNSS516
3/8 - 16	Plain	HNS0138
	Clear Zinc	HNS1138
	Yellow Zinc	HNSY138
	Black Zinc	HNSB038
	Stainless	HNSS0038

Flange Nuts

Made in China



Size	Finish	Part Number
5/16 - 18	Plain	HNF0516
	Clear Zinc	HNF1516
	Yellow Zinc	HNFY516
	Black Zinc	HNFB516
	Stainless	HNFSS0516
3/8 - 16	Plain	HNF0138
	Clear Zinc	HNF1138
	Yellow Zinc	HNFY138
	Black Zinc	HNFB138
	Stainless	HNFSS0138

Lock Washers

Made in China



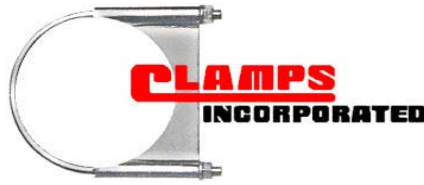
Size	Finish	Part Number
5/16 - 18	Plain	LWS0516
	Clear Zinc	LWS1516
	Yellow Zinc	LWSY516
	Black Zinc	LWSB516
	Stainless	LWSS0516
3/8 - 16	Plain	LWS0138
	Clear Zinc	LWS1138
	Yellow Zinc	LWSY138
	Black Zinc	LWSB038
	Stainless	LWSS038

Note We Reserve the right to change specifications and / or designs without prior notice or obligation

Clamps Incorporated 5960 American Road East Toledo, OH 43612
 Ph / 800-837-0141 Ph / 419-729-2141 Fx / 419-729-5776

Hardware

Hardware



Custom Manufactured Products

Bent Bolts

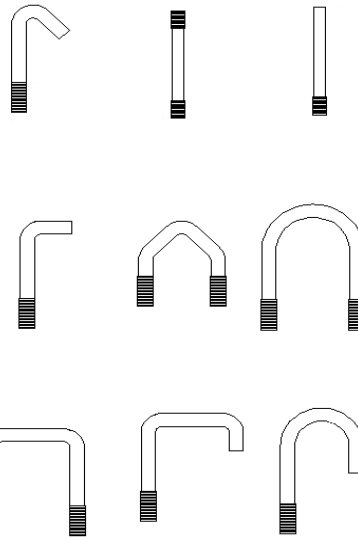
Clamps Incorporated specialize in the custom manufacturing of a variety of bent bolts, such as J-Bolts, L-Hooks, and U-Bolts. We offer a wide range of applied finishes, including adhesives, nickel plating, PTFE coating and chrome. Working with 304 and 409 stainless steel, as well as mild steel 1008 to 1541, we can accommodate threads measuring from 0.25 to 0.625 inches (M6-M16).

Upholding a (+/-) 0.01 inch precision tolerance and built in a heat and corrosion resistant operating environment, our custom manufactured bent bolts meet high industry standards and have served the needs of diverse industries, including solar and OEM trucking.

Contact us to learn more about our custom manufactured bent bolts.

Bolt Type:

- Flat J-Hook
- Hook
- J-Bolt (Round)
- J-Bolt (Square)
- L-Hook
- Straight
- U-Bolt (Round)
- U-Bolt (Square)
- V-Bolt



Progressive & Single Die Stampings



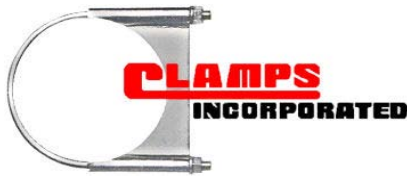
Equipped with a 75 to 400 ton press rating and upholding a (\pm) 0.015 inch precision tolerance, our progressive and single die stamping services always meet high industry standards.

We have the ability to stamp parts up to 0.3125 inches thick. Our progressive and single die stamping services can be applied to several bracket type products. In addition to our die stamping operations, we also invite you to inquire about our additional service options, which include assembly, manufacturability consulting, power coating, plating, and welding. Contact us to learn more about our advanced, custom progressive and single die stamping services.



Custom Products

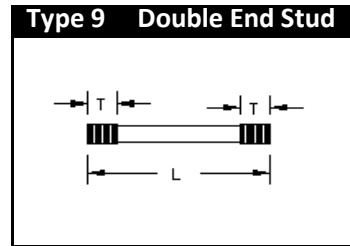
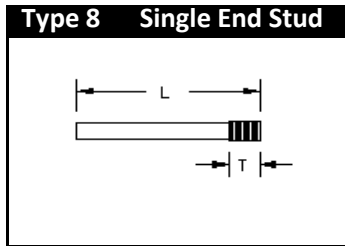
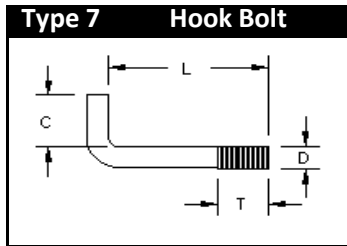
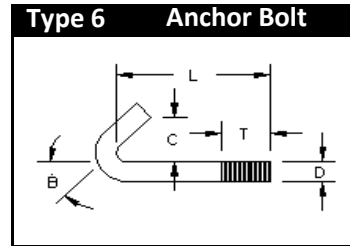
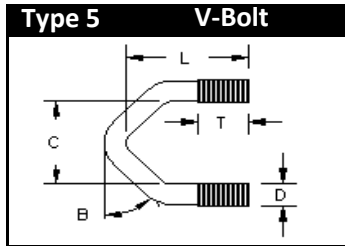
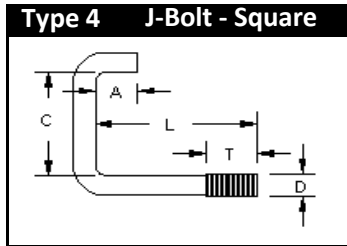
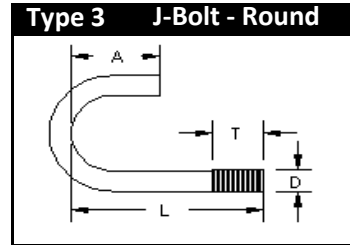
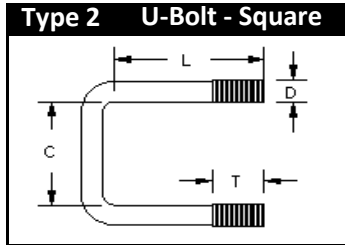
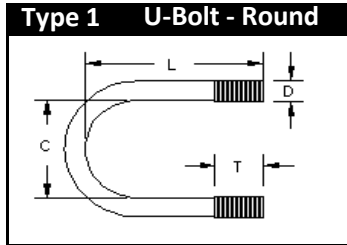
Custom Products



Custom Bent / Threaded Bolts

Custom Bent / Threaded Bolts

Custom Bent / Threaded Bolts



Bolt Type: _____

A: _____

Part Number: _____

B: _____

Material: _____

C: _____

Quantity: _____

D: _____

Finish: _____

L: _____

T: _____

Company Name: _____

City, State: _____

Your Name: _____

Ph / : _____

Fx / : _____

Em / : _____



To Be Determined

To Be Determined



Material / Finish / Package / Options

Material / Finish / Package / Options

Material / Finish / Package / Options

Add Suffix to Basic Part Number

Material / Finish	Package	Suffix
Plain	Assembled Bulk Pack / Plain	A
	Bulk Pack / Individual Poly Bag / Plain	KB
	Bulk Pack / Un-Assembled / Plain	B
	Fifty Pack Box / Individual Poly Bag / Plain	F
	Ten Pack Box / Individual Poly Bag / Plain	T
Clear Zinc	Assembled Bulk Pack / Clear Zinc	A1
	Bulk Pack / Individual Poly Bag / Clear Zinc	KB1
	Bulk Pack / Un-Assembled / Clear Zinc	B1
	Bulk Pack / Un-Assembled / Clear Zinc	1
	Fifty Pack Box / Individual Poly Bag / Clear Zinc	F1
	Ten Pack Box / Individual Poly Bag / Clear Zinc	T1
Yellow Zinc	Assembled Bulk Pack / Yellow Zinc	AYD
	Assembled Bulk Pack / Yellow Zinc	AY
	Bulk Pack / Un-Assembled / Yellow Zinc	BY
	Bulk Pack / Un-Assembled / Yellow Zinc	BYD
	Bulk Pack / Un-Assembled / Yellow Zinc	Y
	Bulk Pack / Un-Assembled / Yellow Zinc	YD
	Bulk Packaged / Individual Poly Bag / Yellow Zinc	KBYD
	Fifty Pack Box / Individual Poly Bag / Yellow Zinc	FYD
	Ten Pack Box / Individual Poly Bag / Yellow Zinc	TYD
Black Zinc	Assembled Bulk Pack / Black Zinc	ABZ
	Bulk Pack / Individual Poly Bag / Black Zinc	KBBZ
	Bulk Pack / Un-Assembled / Black Zinc	BBZ
	Bulk Pack / Un-Assembled / Black Zinc	BZ
	Fifty Pack Box / Individual Poly Bag / Black Zinc	FBZ
	Ten Pack Box / Individual Poly Bag / Black Zinc	TBZ
Black Paint	Assembled / Bulk Pack / Black Paint	BPA
	Bulk Pack / Un-Assembled / Black Paint	BBP
	Bulk Packaged / Individual Poly Bag / Black Paint	KBBP
	Fifty Pack Box / Individual Poly Bag / Black Paint	FBP
	Ten Pack Box / Individual Poly Bag / Black Paint	TPB
Chrome	Assembled Bulk Pack / Chrome	A2
	Bulk Pack / Un-Assembled / Chrome	2
	Bulk Pack / Un-Assembled / Chrome	B2
	Bulk Package / Individual Poly Bag / Chrome	KB2
	Fifty Pack Box / Individual Poly Bag / Chrome	F2
	Ten Pack Box / Individual Poly Bag / Chrome	T2
Stainless Steel	Assembled Bulk Pack / Stainless Steel	SSA
	Bulk Pack / Individual Poly Bag / Stainless Steel	KBS
	Bulk Pack / Un-Assembled / Stainless Steel	SS
	Bulk Pack / Un-Assembled / Stainless Steel	SSB

Suffix's are not used on all part offered

Other Packs Available on Request



Sellers Terms and Conditions of Sale

Page 1 of 4

All orders are expressly conditioned on Buyer's assent to Clamps Incorporated (Seller's) sales and credit terms only and not to terms and conditions appearing on Buyer's purchase order or contract. Buyer waives any right to object to these terms and conditions. Buyer's assent to these terms and conditions shall be evidenced by acceptance of any shipment. Seller's failure to object to terms contained in any communication from Buyer shall not be deemed to be a waiver of these terms and conditions.

Said terms and conditions are as follows:

Net Prices:

All prices are subject to change without notice. This price list supersedes and cancels all previous price lists. Prices are F.O.B. shipping point.

Minimum Order:

Invoice/Open account minimum order is \$100.00 net. Invoice/Open account orders less than \$100.00 net will not be accepted. Credit card minimum order is \$50.00. Accepted credit/debit cards are Visa, Master Card, Discover and American Express.

Telephone Calls:

Seller will accept only paid phone calls. Seller will NOT accept responsibility for any errors made in telephoned or oral instructions. To avoid any errors, a confirming purchase order must be mailed, faxed or e-mailed to Seller.

Terms of Payment:

Terms are 2% - ten (10) days, net thirty (30) days. A 1-1/2% monthly carrying charge will be added to all past due accounts, beginning the thirty-first (31st) day from date of invoice. Shipments can be made C.O.D. or cash in advance prior to credit approval. All invoices are payable in U.S. funds. Please pay from invoice.

Cancellations:

Buyer may not cancel any order without Seller's prior written approval and will be subject to charges for expenses incurred and work executed by Seller or our suppliers.

Shipment:

Shipment will be made F.O.B. shipping point at which time risk of loss shall pass to Buyer. Seller reserves the right to select means and route of shipment if specific instructions are not included with order, and Buyer waives any right it may have to notification of shipment. Seller may in its discretion make partial shipments. Seller will endeavor to ship merchandise within the specified time; however, Seller does not guaranty delivery.

Risk of Loss and Deliver Title:

Liability for loss or damage passes to Buyer on delivery. Delivery of goods by the Seller to the carrier at the shipping point constitutes delivery to Buyer. Title to goods shall pass to Buyer subject to Seller's right of stoppage in transit to secure payment of the purchase price for the goods.



Sellers Terms and Conditions of Sale

Page 2 of 4

Force Majeure:

Seller shall not be liable for any delay in performance or for non-performance, in whole or in part caused by the occurrence of any contingency beyond the control of Seller or Seller's suppliers, including but not limited to, war, sabotage, insurrection, riot or other act of civil disobedience, act of a public enemy, failure or delay in transportation, act of any government or agency thereof affecting the terms of this contract, judicial action, labor dispute, accident, fire, explosion, flood, storm or other Act of God, shortage of labor, fuel, raw materials, tools, dies or equipment or technical failure. Any such delays shall excuse Seller from performance, and Seller's time for performance shall be extended for the period of delays and for a reasonable time thereafter. In no event shall Seller be liable for direct, indirect, special, incidental or consequential damages for any delay or non-performance.

Multiple Shipments - Separate Contracts:

If the contract provides for, or if Seller elects to make, multiple shipments or deliveries, each such shipment or delivery shall be construed as a separate sale. Buyer agrees to accept and pay for each such shipment or delivery. Should Buyer fail to accept and pay for each shipment or delivery, Seller may without prejudice to any other lawful remedy defer further shipments or deliveries until acceptance thereof by Buyer or until payment is made by Buyer. Seller may at its sole discretion without liability whatsoever terminate this contract as to any unaccepted or undelivered portion thereof, as well as any other outstanding contract with Buyer. Buyer shall be responsible for any expenses and losses sustained by Seller by so doing.

Shortages:

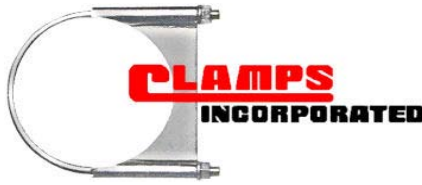
Shortages or errors made in filling an order must be reported to Seller within ten (10) days of delivery or Seller will not honor them. Before claiming a shortage, Buyer must verify that no containers were received in damaged condition.

Loss or Damage:

For orders shipped F.O.B. origin freight collect, any claims must be filed by the consignee direct with the carrier. Under no circumstances should freight be refused by Buyer. Buyer is to verify that the correct number of pieces is received prior to signing the freight bill. Buyer must make note on the freight bill any visible damage to pieces received.

Claims and Allowances:

Seller shall not be liable for manufacturing defects for goods which pass without objection in the trade under the contract description or for goods which are of fair average quality. Claims of any kind or nature, except for latent defects, are specifically barred unless made in writing by registered mail within sixty (60) days after delivery to Buyer. Seller's limit of liability for defective merchandise shall be the difference in value on contract date of delivery between goods specified and goods actually delivered. The limit of Seller's liability for non-delivery shall be the difference, if any, between the contract price and the fair market price on the contract date of delivery of the goods to be delivered. In no event shall Seller be liable for direct, indirect, special, incidental or consequential damages for any delay or non-performance.



Sellers Terms and Conditions of Sale

Page 3 of 4

Returned Goods:

All returned goods must have an authorization number assigned by Seller. Items returned for credit will be subject to a 20% restocking charge and must be returned FREIGHT PREPAID. No items for return will be accepted beyond twelve (12) months from date of shipment, or if an overstock situation exists at the time of request. Customer must supply Seller with invoice number and purchase order number from which shipment was made. ONLY CURRENT MODEL PARTS IN SALEABLE CONDITION WILL BE ACCEPTED.

Overruns:

Overruns on custom and/or special order merchandise up to 5% of the quantity ordered shall constitute an acceptable delivery.

Termination:

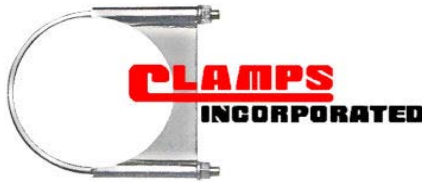
Seller may cancel this contract in the event of Buyer's breach. Seller may also cancel this contract on occurrence of any of the following: insolvency of Buyer; filing by Buyer of a voluntary petition of bankruptcy; filing of an involuntary petition to have Buyer declared bankrupt; appointment of a receiver or trustee for Buyer; execution by Buyer of an assignment or composition arrangement for the benefit of creditors; filing of a voluntary or involuntary petition for corporate reorganization of Buyer; or initiation by any party for any other proceeding involving Buyer as debtor under the Bankruptcy Act, as amended. In the event of any cancellation under this paragraph, Seller without prejudice to any other rights available to it for breach of this contract shall have the right: (i) to refuse to deliver any additional goods; (ii) to recover from Buyer the contract price of all goods delivered and for freight, storage, handling and other expenses incurred by Seller; or (iii) to sell elsewhere and charge Buyer with any resultant damages.

Warranty - General:

All products manufactured by Clamps Incorporated are warranted to be free from defects in materials and/or workmanship for a period of 30 days from the date of receipt by the original purchaser. If you believe any Clamps Incorporated product you have purchased has a defect in material and/or workmanship, or has failed during normal use within the warranty period, please contact Clamps Incorporated at (800) 837-0141 for assistance. If product repair or replacement is necessary, the Customer will be solely responsible for all shipping charges, freight, and insurance required for transit whether or not the product is covered by this warranty, unless otherwise determined by the factory. All shipments of repaired or replaced products by Clamps Incorporated will be F.O.B. at the Clamps Incorporated factory in Toledo, Ohio 43612 U.S.A., unless otherwise determined by the factory. This warranty is limited to factory defects and excludes items subject to norm wear.

Warranty Limitations:

This warranty does not apply to any defects resulting from any customer actions, such as mishandling, improper installation, operation outside of design limits, misapplication, improper repair, or unauthorized modifications. No other warranties are expressed or implied. Clamps Incorporated specifically disclaims any implied warranties of merchantability or fitness for a specific purpose. Clamps, Incorporated's liability shall be limited to the actual purchase price of any defective product or products to which a claim is made, and shall in no event include the Customer's manufacturing costs, lost profits or goodwill, or any other direct, indirect, special, incidental or consequential damages whether based on contract, tort or customary variances from specifications.



Sellers Terms and Conditions of Sale

Page 4 of 4

Warranty - Limitation of Damages:

Clamps Incorporated's products are not intended for personal, family or household use, therefore, this warranty is extended only to commercial and/or industrial users, Products sold by Clamps Incorporated are not designed, intended or authorized for use in applications where the failure of the product could create a situation where catastrophic property damage, personal injury or death may occur. In the event that the Customer purchases or uses any Clamps, Incorporated products for any such unintended or unauthorized application, the Customer shall indemnify and hold harmless Clamps Incorporated and its officers, directors, employees, agents, affiliates, successors and assigns against all claims, costs, damages and expenses (including reasonable attorneys and expert witness fees) arising out of or in connection with, directly or indirectly, any claim for property damage, personal injury or death associated with such unintended or unauthorized use, even if such claim alleges that Clamps Incorporated was negligent regarding the design or manufacture of the subject product. Clamps Incorporated 5960 American Rd. East, Toledo, OH, 43612, U.S.A., Ph / 419.729.2141, Fx / 419.729.5776.

Warranty Claim Procedure:

All warranty claims must be made within forty-five (45) days after receipt by original purchaser. Claims must be in writing and include a representative sample of the defective product, with the proof of purchase. All claims must be mailed to attention of the Warranty Department Clamps Incorporated, 5960 American Road East, Toledo, OH 43612, U.S.A. Clamps Incorporated will promptly advise the user of their findings.

Patent Infringement:

If any merchandise shall be sold by Seller to meet Buyer's particular specifications or requirements and is not part of Seller's standard line offered to the trade generally in the ordinary course of Seller's business, Buyer agrees to indemnify, defend, protect and hold Seller harmless against any and all suits at law or equity and from any and all loss, damage, claims and demands for actual or alleged infringement of any United States or foreign patents, and to defend any suit which may be brought against Seller for any alleged infringement because of the sale of the merchandise ordered by Buyer. In the event Buyer fails to defend Seller, Buyer shall be responsible for all of Seller's attorney fees, costs of defense, expert witness fees and other litigation related expenses.

Attorney's Fees:

If Seller seeks to enforce any of the terms hereof due to Buyer's breach, Buyer shall pay Seller's reasonable attorney's fees and expenses.

Assignment:

This contract is binding upon and inures to the benefit of the parties and the successor and assigns of the entire business and goodwill of Seller or Buyer, but will not otherwise be assignable by Buyer; except that Seller may assign the proceeds of this contract. Nothing in this contract shall inure to the benefit of or be deemed to give rise to any rights in any third party.

For further information or questions, contact Clamps Incorporated:

Our normal sales desk hours are 6:00 a.m. - 4:30 p.m. EST, Monday through Thursday.

Clamps Incorporated

5960 American Road East, Toledo, OH 43612

Ph / 800.837-0141 Ph / 419.729.2141 Fx / 419.729.5776

Clamps Incorporated 5960 American Road East Toledo, OH 43612
Ph / 800-837-0141 Ph / 419-729-2141 Fx / 419-729-5776



Contact List

Title / Position	Name	Phone	Email
President / General Manager	Anthony "Nino" Carollo	419.729.2141 x 110	nino@clampsinc.com
Vice President / Quality Manager	Tom Shackelford	419.729.2141 x 109	tshackelford@clampsinc.com
Office Manager	Jeanne Graham	419.729.2141 x 105	jeanne@clampsinc.com
Sales Manager	Jim McDonagh	419.729.2141 x 108	jimm@clampsinc.com
Cost Estimator	Thad Thomas	419.729.2141 x 116	thad@clampsinc.com
Production Scheduler / Customer Service	Amy Wilkins	419.729.2141 x 101	awilkins@clampsinc.com
Customer Service Coordinator	Donna Jones	419.729.2141 x 104	dnavarro@clampsinc.com
Shipping Manager	Kelly Smith	419.729.2141 x 107	kelly@clampsinc.com



Clamps Incorporated
5960 American Road East
Toledo, OH 43612

Ph / 800-837-0141

Ph / 419-729-2141

Fx / 419-729-5776



www.clampsinc.com